

VZORNÍK CAMELGROUP

ITALIER

VZORNÍK

KATEGORIE A	BAIA, POSITANO	7	KATEGORIE B	JOINT	13	KATEGORIE C	PARIGI	20
	801	8		SELFIE	14		NOCCILO	21
	SCARLET	9-10		X 198	15		ZEPH	22
	VERMONT	11		ECONABUCK	16		ROMBI	23
			X 390, X 391, X 392, X 393	17	VERMONT	24		
			X 390, X 391, X 392, X 393	18				
KATEGORIE D	SAKE	26	KATEGORIE E	CHROMIA	33			
	825/826/827/838/832	27-31		CHROMIA	34			
		MARTELE		35				
		X 387		36				
		DEBUSSY		37				
		FLUTE		38				

VZORNÍK

KATEGORIE F	OPIUM	40	KATEGORIE G	ELEGANTE	44
	BELLINI	41		FAVOLA	45
	VEGA	42		FOSCARI	46
				GRACE	47
				KILT	48
				MIRAGLIO	49
			PEDROCCHI	50	
KATEGORIE Kůže	KŮŽE	51-54	ČALOUNĚNÍ: POSTELE	NABUK, CASTORO, VISONE, MOJITO, GRIGIO SU PILE, TIME	55
				MONTREAL, PANAREA, 7836	56
				MATERIÁLY	GOLD COLLECTION
			TRADITIONAL COLLECTION		59
			MODUM COLLECTION		60

SYMBOLY PRO OŠETŘENÍ TEXTILIÍ

	Pouze ruční praní / <i>Hand wash only</i>		Žehlit na rubové straně při nízkých teplotách / <i>Iron on reverse side and at low temperatures</i>
	Prát při maximální teplotě 30° / <i>Wash at max. temp. 30°</i>		Nežehlit / <i>Do not iron</i>
	Prát při maximální teplotě 30°, se sníženými otáčkami / <i>Wash at max. temp. 30° and with reduced mechanical action</i>		Výrobek je možné čistit chemickými prostředky / <i>Dry clean with any solvent</i>
	Prát při maximální teplotě 40° / <i>Wash at max. temp. 40°</i>		Suché čištění jakýmkoli rozpouštědlem, s výjimkou trichlorethylenu / <i>Dry clean with any solvent, trichloroethylene excluded.</i>
	Prát při maximální teplotě 40°, se sníženými otáčkami / <i>Wash at max. temp. 40° and with reduced mechanical action</i>		Suché čištění trichlorethylenem a jemné praní. Nečistěte v prádelnách na mince. / <i>Dry clean with trichloroethylene and delicate wash. Do not dry clean at coin laundries.</i>
	Prát při maximální teplotě 60° / <i>Wash at max. temp. 60°</i>		Výrobek se nesmí chemický čistit / <i>Do not dry clean</i>
	Prát při maximální teplotě 60°, se sníženými otáčkami / <i>Wash at max. temp. 60° and with reduced mechanical action</i>		Zavěste ve vodorovné poloze / <i>Hang up in horizontal position</i>
	Výrobek se nesmí prát / <i>Do not wash in water</i>		Zavěste bez mačkání / <i>Hang up without squeezing</i>
	Nesušit v bubnové sušičce / <i>Wash without tumble dry</i>		Lze sušit v bubnové sušičce / <i>Tumble dry</i>
	Výrobek se nesmí bělit / <i>Do not use bleach</i>		Sušení při nízké teplotě / <i>Tumble dry at reduced temperature</i>
	Žehlení při minimální teplotě / <i>Iron at low temperatures</i>		Sušení při normální teplotě / <i>Tumble dry at normal temperature</i>
	Žehlení při střední teplotě / <i>Iron at medium temperatures</i>		Nesušit v bubnové sušičce / <i>Do not tumble dry</i>
	Žehlení při maximalní teplotě / <i>Ironed at high temperatures</i>		

Zobrazené barvy látek a materiálů jsou pouze orientační, barevné odlišnosti mohou nastat rozdílným zobrazením monitorů, tisku či focením.

SLOŽENÍ LÁTEK

Kód

WO	Vlna	Wool
WP	Alpaka	Alpaca
WL	Lama	Lama
WK	Velbloud	Camel
WS	Kašmír	Kashmir
WM	Mohér	Mohair
WA	Angora	Angora
WG	Vikuně	Vicuna
WY	Jak	Yak
WU		Guanaco
WB	Bobr	Beaver
WT	Vydra	Otter
HA	Srst	Hair
SE	Hedvábí	Silk
CO	Bavlna	Cotton
KP	Kapok	Kapok
LI	Len	Flax
CA	Pravé konopí	True hemp
JU	Juta	Jute
AB	Abaka	Abaca (Manila hemp)
AL	Alfa	Alfa
CC	Kokosové vlákno	Coir (coconut)
GI	Janovec	Broom
RY	Hedvábí	Rayon
PES	Polyester	Polyester
PVC	Polyvinilchlorid	Polyvinylchloride

Kód

KE	Kenaf	Kenaf (Hibiscus hemp)
RA	Ramie	Ramie
SI	Sisal	Sisal
SN		Sun
HE		Henequen
MG		Maguey
AC	Acetát	Acetate
AG	Alginát	Alginate
CU	Měď	Cupro
MD		Modal
PR		Protein
TA	Triacetát	Triacetate
VI	Viskóza	Viscose
PC	Akryl	Acrylic
CL	Chlorovlákn	Chlorofibre
FL	Fluorovlákn	Fluorofibre
MA	Modakryl	Modacrylic
PA		Nylon
PL		Polyester
PE	Polyethylen	Polyethylene
PP	Polypropylen	Polypropylene
PB	Polykarbamid	Polycarbamide
PU	Polyuretan	Polyurethane

Kód

VY	Vynylal	Vinylal
TV		Trivinyl
EL	Guma	Elastodiene
EA	Elastan	Elastane
GL	Skleněné vlákno	Glass fibre
ME	Kov	Metal
	Kovový	Metallic
	Pokovené	Metallised
AS	Azbest	Asbestos
PI	Papír	Paper

SPECIFICKÉ OZNAČENÍ

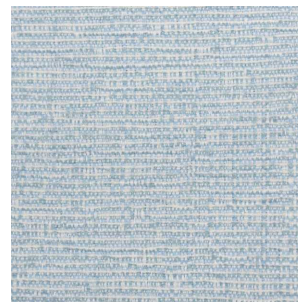
IWS	Čistá střížní vlna	Pure virgin wool
WV	Ovčí vlna	Fleece wool
AF	Jiná vlákna	Other fibres
HL		Cotton linen Union
TR	Zbytky textilu	Textile residues
	nebo neurčené složení	or unspecified composition
TS	Laminovaná tkanina	Laminated cloth
SC	Syntetický	Synthetic

KATEGORIE A

Kat. A



BAIA Col.62



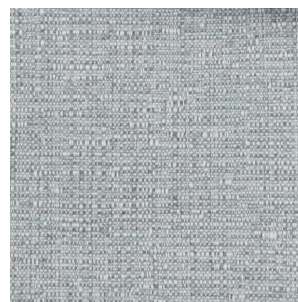
POSITANO Col.67



POSITANO Col.20



BAIA Col.63



POSITANO Col.64



POSITANO Col.61

BAIA

Složeni: 60%CO, 40%PL

Martindale: 30 00 cyklů

POSITANO

Složeni: 44%CO, 34%PL, 22%PC

Martindale: 32 000 cyklů



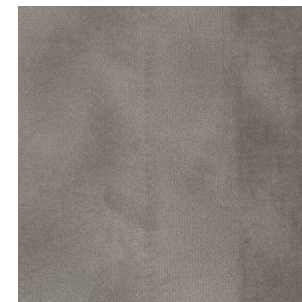
Kat. A



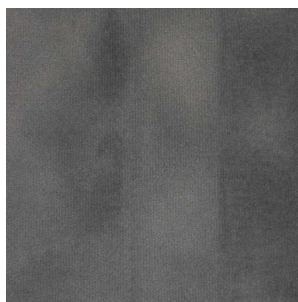
801 Col.01 Bianco



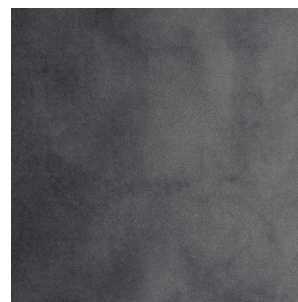
801 Col.104 Crema



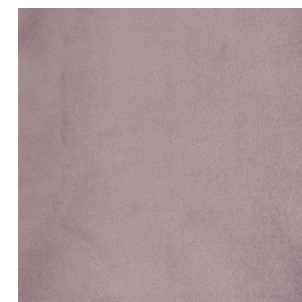
801 COL.130 Taupe



801 Col.205 Grigio Fumo



801 Col.617 Ardesia



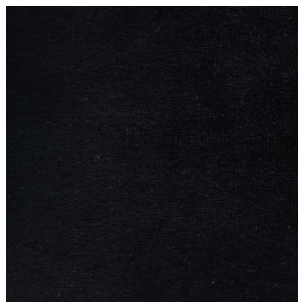
801 Col.23 Rosa

Složeni: 100%PL

Martindale: 100 000 cyklů



Kat. A



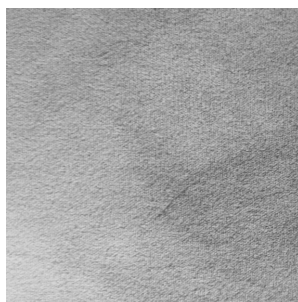
Scarlet Col.01



Scarlet Col.02



Scarlet Col.04



Scarlet Col.05



Scarlet Col.08



Scarlet Col.09



Scarlet Col.11



Scarlet Col.14



Scarlet Col.28

Složeni: 100%PES



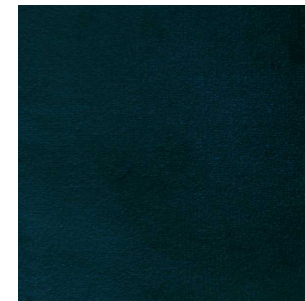
Kat. A



Scarlet Col.29

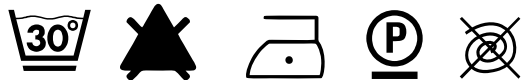


Scarlet Col.37



Scarlet Col.40

Složeni: 100%PES



Kat. A



Vermont Col.116 Cenere



Vermont Col.175 Tortora



Vermont Col.240 Testa di Moro



Vermont Col.920 Perla



Vermont Col.911 Panna

Složeni: 100%PES



KATEGORIE B

Kat. B



JOINT Col.401



JOINT Col.403



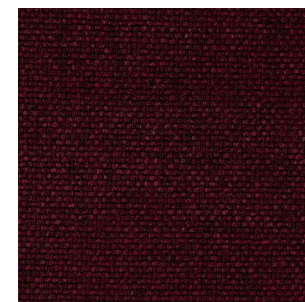
JOINT Col.603



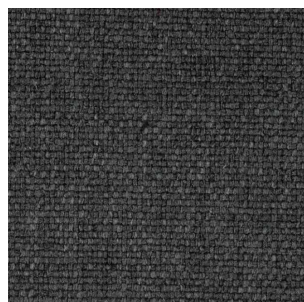
JOINT Col.405



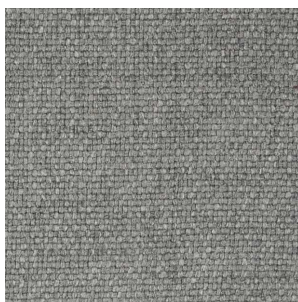
JOINT Col.305



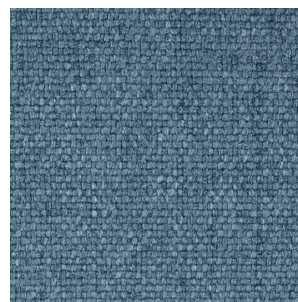
JOINT Col.303



JOINT Col.604



JOINT Col.601



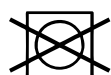
JOINT Col.706



JOINT Col.714

Složeni: 100%PL

Martindale: 60 00 cyklů



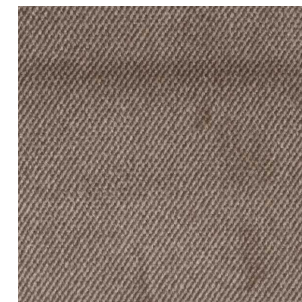
Kat. B



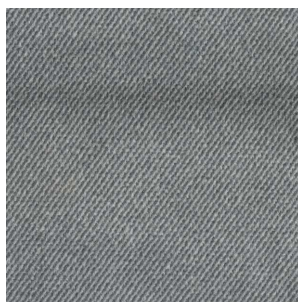
SELFIE Col.101



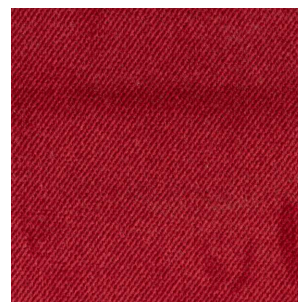
SELFIE Col.401



SELFIE Col.406



SELFIE Col.601



SELFIE Col.305



SELFIE Col.911



SELFIE Col.710



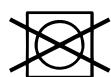
SELFIE Col.715



SELFIE Col.714

Složeni: 100%PL

Martindale: 65 00 cyklů



Kat. B



X198 Col. 09



X198 Col. 10



X198 Col. 16



X198 Col. 07



X198 Col. 23



X198 Col. 24



X198 Col. 15



X198 Col. 06



X198 Col. 02

Složeni: 82%PL 18% RAYON

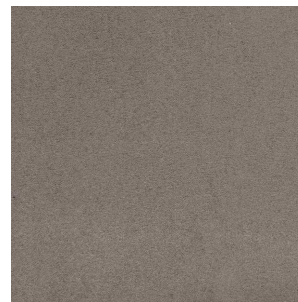
Martindale: 100 00 cyklů



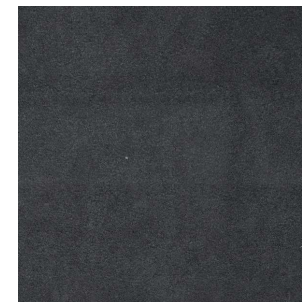
Kat. B



ECONABUCK LISCIO Col.11



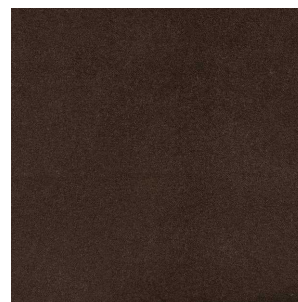
ECONABUCK LISCIO Col.12



ECONABUCK LISCIO Col. 44



ECONABUCK LISCIO Col.59



ECONABUCK LISCIO Col.28

Složeni: 100%PL

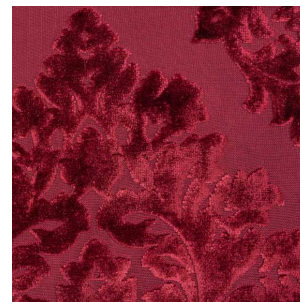
Martindale: 40 00 cyklů



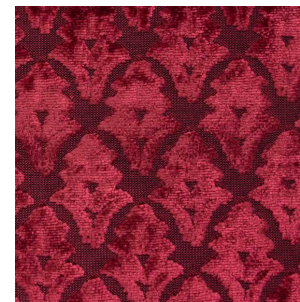
Kat. B



X393 Col.06



X390 Col. 06



X392 Col. 06



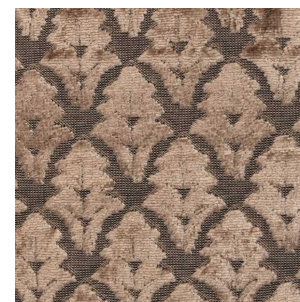
X391 Col. 06



X393 Col.03



X390 Col. 03



X392 Col. 03



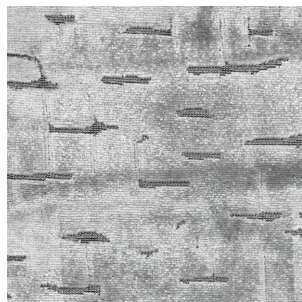
X391 Col. 03

Složeni: 100%PL

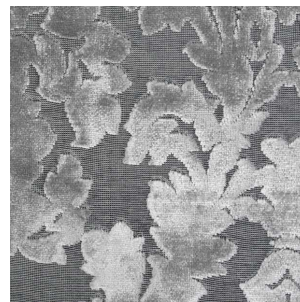
Martindale: 90 00 cyklů



Kat. B



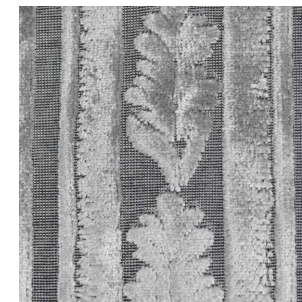
X393 Col.04



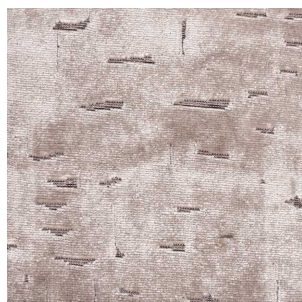
X390 Col. 04



X392 Col. 04



X391 Col. 04



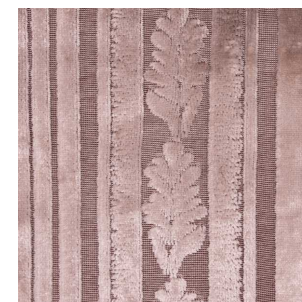
X393 Col.02



X390 Col. 02



X392 Col. 02



X391 Col. 02

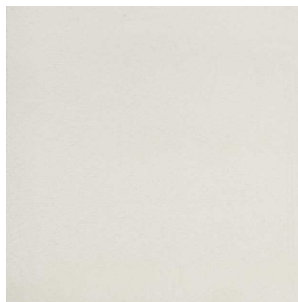
Složeni: 100%PL

Martindale: 90 00 cyklů



KATEGORIE C

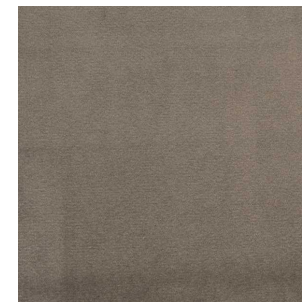
Kat. C



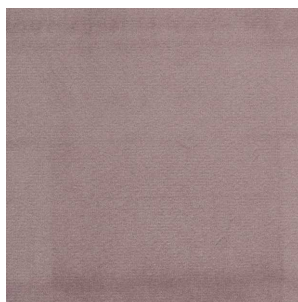
PARIGI 823 Col.01



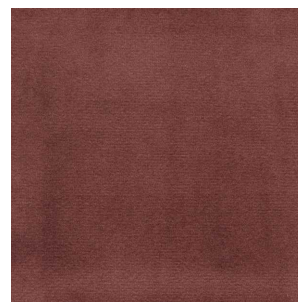
PARIGI 823 Col.16



PARIGI 823 Col.130



PARIGI 823 Col.23



PARIGI 823 Col.80

Složeni: 100%PL

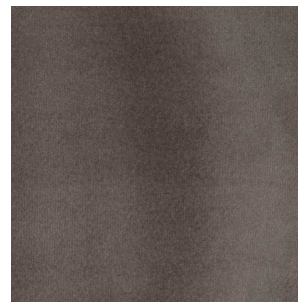
Martindale: 40 00 cyklů



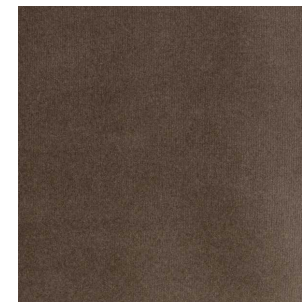
Kat. C



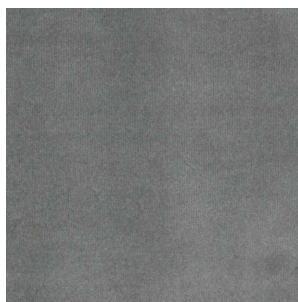
NOCCILO 441 Col.22



NOCCILO 441 Col.12



NOCCILO 441 Col.11



NOCCILO 441 Col.10



NOCCILO 441 Col.18



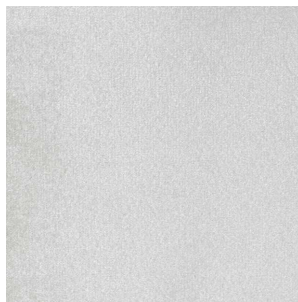
NOCCILO 441 Col.19

Složeni: 100%PL

Martindale: 50 00 cyklů



Kat. C



ZEPH Col.01



ZEPH Col.23



ZEPH Col.24



ZEPH Col.02



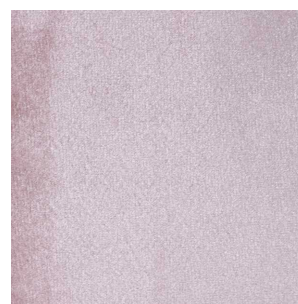
ZEPH Col.03



ZEPH Col.18



ZEPH Col.16



ZEPH Col.6

Složeni: 100%PL

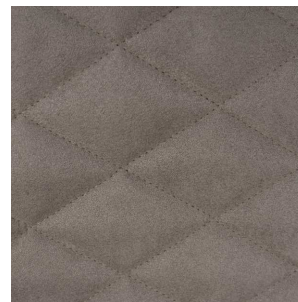
Martindale: 45 00 cyklů



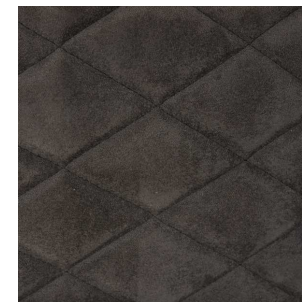
Kat. C



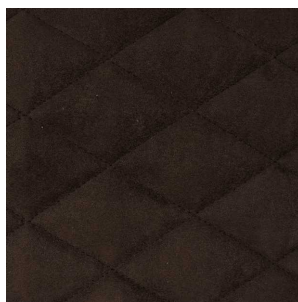
ROMBI 1424 Col. 11



ROMBI 1424 Col. 12



ROMBI 1424 Col. 59



ROMBI 1424 Col. 28



ROMBI 1424 Col. 44

Složeni: 70%PL 30%PU

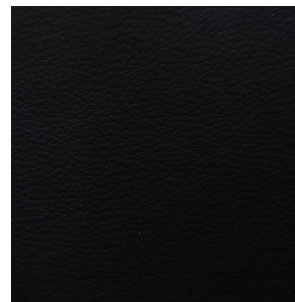
Martindale: 25 00 cyklů



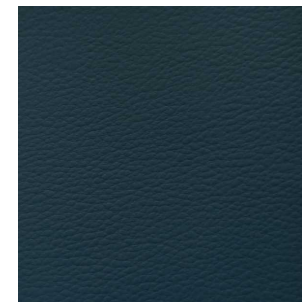
Kat. C



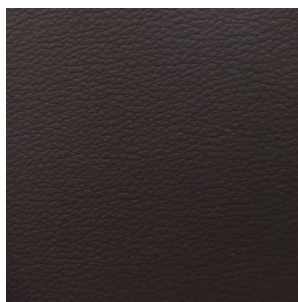
Time Col.001 White



Time Col.016 Black



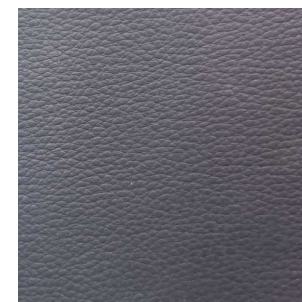
Time Col.115 Blue



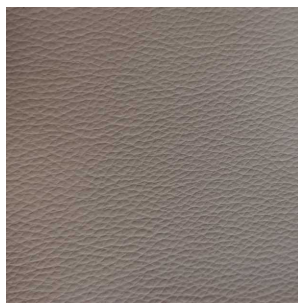
Time Col.500 Dark Brown



Time Col.747 Cream



Time Col.791 Grey



Time Col.800 Tortora



Time Col.992 Beige

Složeni: 10%CO, 20%PES, 1%PU, 69%PVC



KATEGORIE D

Kat. D



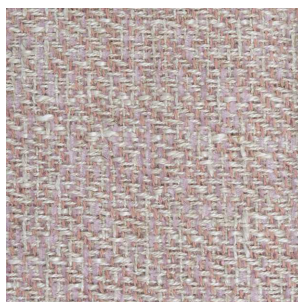
SAKE 129 Col.10



SAKE 129 Col.11



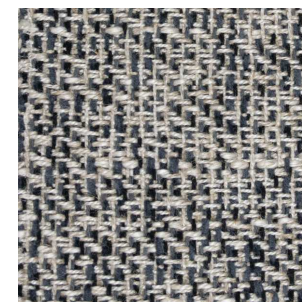
SAKE 129 Col.12



SAKE 129 Col.46



SAKE 129 Col.06



SAKE 129 Col.01

Složeni: 34%CO 32%VI 13%AC 14%LI 7%POL

Martindale: 20 00 cyklů



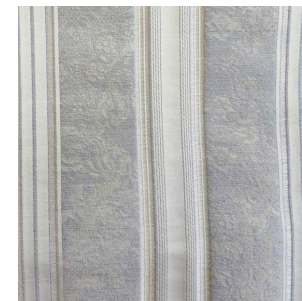
Kat. D



832 Col. 19



826 Col. 301



825 Col. 301



828 Col. 301



827 Col. 301

Art. 826/825/828/827

Složeni: 65 % PL, 23%LI, 12%CO

Martindale: 16.000 cyklů

Art. 832

Složeni: 100 % POL

Martindale: 100.000 cyklů



Kat. D



832 Col. 619



826 Col. 100



825 Col. 100



825 Col. 100



827 Col. 100

Art. 826/825/828/827

Složeni: 65 % PL, 23%LI, 12%CO

Martindale: 16.000 cyklů

Art. 832

Složeni: 100 % POL

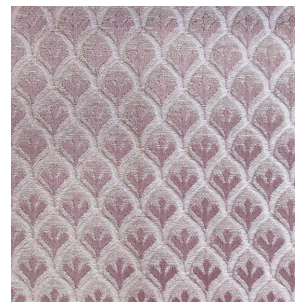
Martindale: 100.000 cyklů



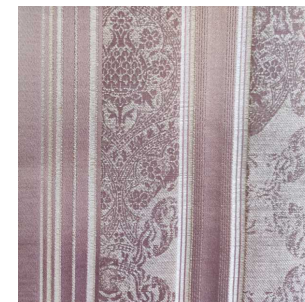
Kat. D



832 Col. 615



826 Col. 600



825 Col. 600



828 Col. 600



827 Col. 600

Art. 826/825/828/827

Složeni: 65 % PL, 23%LI, 12%CO

Martindale: 16.000 cyklů

Art. 832

Složeni: 100 % POL

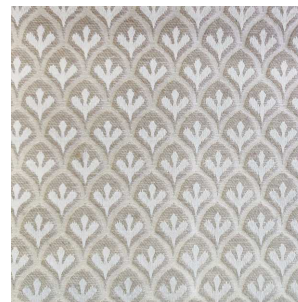
Martindale: 100.000 cyklů



Kat. D



832 Col. 17



826 Col. 300



825 Col. 300



828 Col. 300



827 Col. 300

Art. 826/825/828/827

Složeni: 65 % PL, 23%LI, 12%CO

Martindale: 16.000 cyklů

Art. 832

Složeni: 100 % POL

Martindale: 100.000 cyklů



Kat. D



832 Col. 02



826 Col. 500



825 Col. 500



828 Col. 500



827 Col. 500

Art. 826/825/828/827

Složeni: 65 % PL, 23%LI, 12%CO

Martindale: 16.000 cyklů

Art. 832

Složeni: 100 % POL

Martindale: 100.000 cyklů



KATEGORIE

Kat. E



CRHOMIA 1590
Col. 01



CRHOMIA 1587
Col. 01



CRHOMIA 1586
Col. 01



CRHOMIA 1590
Col. 02



CRHOMIA 1587
Col. 02



CRHOMIA 1586
Col. 02



CRHOMIA 1590
Col. 07



CRHOMIA 1586
Col. 07

CRHOMIA 1590

Složeni: 49%CO 23%PL 19%VI 9%LI

Martindale: 28 00 cyklů

CRHOMIA 1587

Složeni: 49%CO 23%PL 19%VI 9%LI

Martindale: 26 00 cyklů

CRHOMIA 1586

Složeni: 81%CO 13%PL 6%PC

Martindale: 20 00 cyklů



Kat. E



CRHOMIA 1590
Col. 03



CRHOMIA 1587
Col. 03



CRHOMIA 1586
Col. 03

CRHOMIA 1590

Složeni: 49%CO 23%PL 19%VI 9%LI

Martindale: 28 00 cyklů

CRHOMIA 1587

Složeni: 49%CO 23%PL 19%VI 9%LI

Martindale: 26 00 cyklů

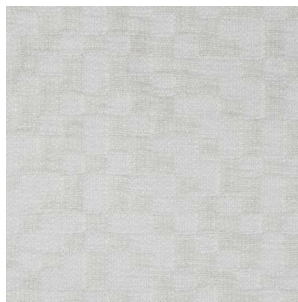
CRHOMIA 1586

Složeni: 81%CO 13%PL 6%PC

Martindale: 20 00 cyklů



Kat. E



MARTELÉ 261
Col. 01



MARTELÉ 261
Col. 07



MARTELÉ 261
Col. 08



MARTELÉ 261
Col. 17



MARTELÉ 261
Col. 14



MARTELÉ 261
Col. 45



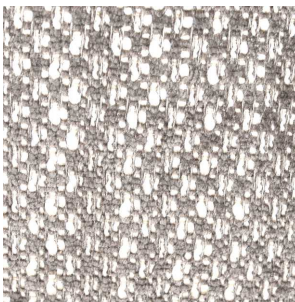
MARTELÉ 261
Col. 50

Složeni: 55%VI 23%CO 17%PL 5%PC H.140

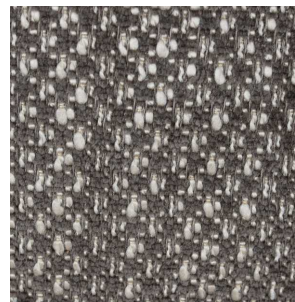
Martindale: 35 00 cyklů



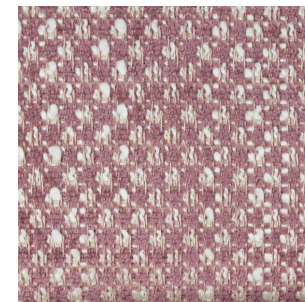
Kat. E



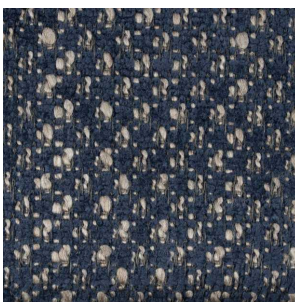
X387 Col.01



X387 Col. 04



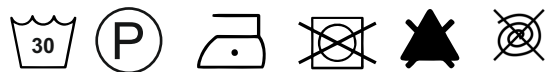
X387 Col. 11



X387 Col.14

Složeni: 5%VI 55%AC 40%PL

Martindale: 65 00 cyklů



Kat. E



DEBUSSY 3983
Col. 01



DEBUSSY 3980
Col. 01



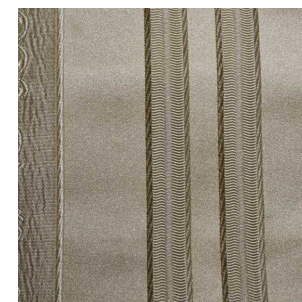
DEBUSSY 3982
Col. 01



DEBUSSY 3983
Col. 02



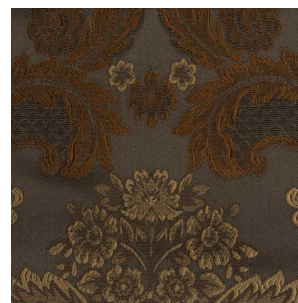
DEBUSSY 3980
Col. 02



DEBUSSY 3982
Col. 02



DEBUSSY 3983
Col. 36



DEBUSSY 3980
Col. 36



DEBUSSY 3982
Col. 36

Složeni: 59%PL 46%FLAMENTI PL 4%A.F.

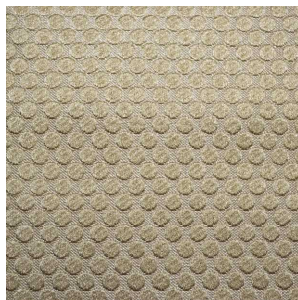
Martindale: 15 00 cyklů



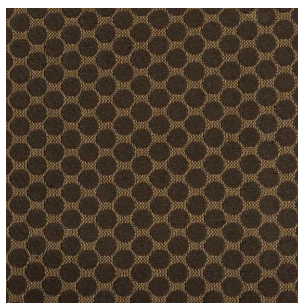
Kat. E



FLUTE 3985
Col. 01



FLUTE 3985
Col. 02



FLUTE 3985
Col. 36

FLUTE

Složeni: 37%CO 63%PL

Martindale: 10 00 cyklů



KATEGORIE F

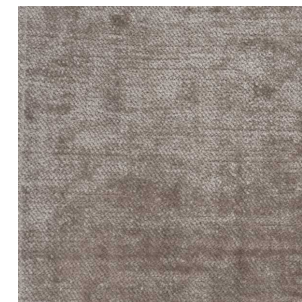
Kat. F



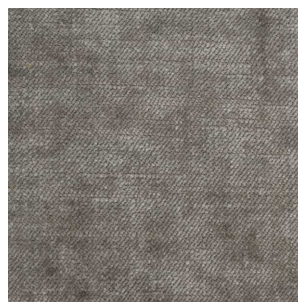
OPIUM 2124
Col. 01



OPIUM 2124
Col. 22



OPIUM 2124
Col. 100



OPIUM 2124
Col. 19

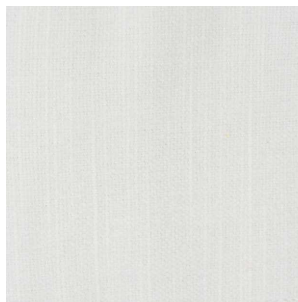
OPIUM

Složeni: 100%PL

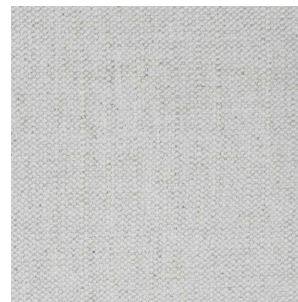
Martindale: 80 00 cyklů



Kat. F



BELLINI 267
Col. 120



BELLINI 267
Col. 113



BELLINI 267
Col. 106



BELLINI 267
Col. 125

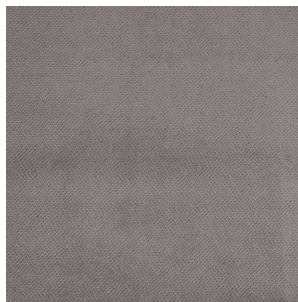
BELLINI

Složeni: 71%VI 14%LI 8%CO 7%PL

Martindale: 30 00 cyklů



Kat. F



VEGA Col.120



VEGA Col.144



VEGA Col.147

VEGA

Složeni: 100%PL

Martindale: 40 00 cyklů



KATEGORIE G

Kat. G



ELEGANTE 5529
Col. 01



ELEGANTE 5529
Col. 22



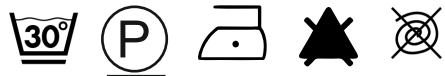
ELEGANTE 5529
Col. 100



ELEGANTE 5529
Col. 19

Složeni: 25%PL 22%CO 43%VI 10%LI

Martindale: 25 00 cyklů



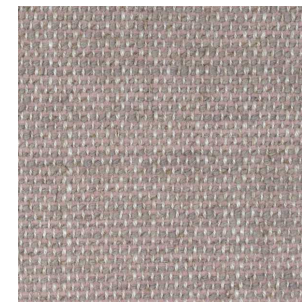
Kat. G



FAVOLA 3527
Col. 01



FAVOLA 3527
Col. 19



FAVOLA 3527
Col. 22



FAVOLA 3527
Col. 04



FAVOLA 3527
Col. 132

Složeni: 25%PL 25%CO 10%LI 22%VI 18%PC

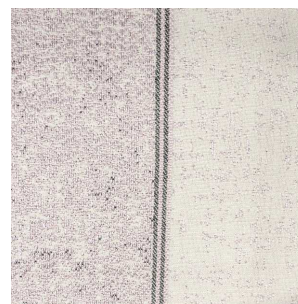
Martindale: 25 00 cyklů



Kat. G



FOSCARI RIGA 5535
Col.01



FOSCARI RIGA 5535
Col. 22



FOSCARI RIGA 5535
Col. 100



FOSCARI RIGA 5535
Col. 19

Složeni: 40%PL 23%CO 37%VI

Martindale: 20 00 cyklů



Kat. G



GRACE 5536
Col. 01



GRACE 5536
Col. 22



GRACE 5536
Col. 100



GRACE 5536
Col. 19

Složeni: 40%PL 23%CO 37%VI

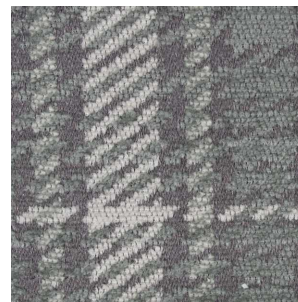
Martindale: 20 00 cyklů



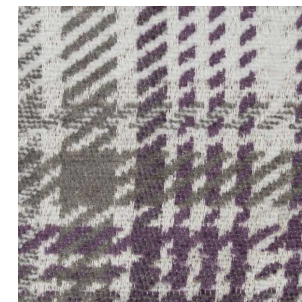
Kat. G



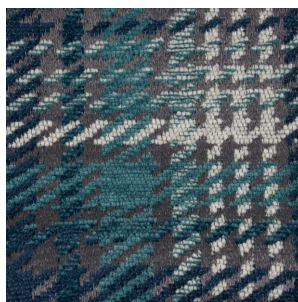
KILT B506 Col.121



KILT B506 Col.123



KILT B506 Col.125



KILT B506 Col.122

Složeni: 70%PC 30%PES

Martindale: 40 00 cyklů



Kat. G



MIRAGLIO 824
Col. 01



MIRAGLIO 824
Col. 104



MIRAGLIO 824
Col. 130



MIRAGLIO 824
Col. 23



MIRAGLIO 824
Col. 205



MIRAGLIO 824
Col. 617

Složeni: 100%PL

Martindale: 100 00 cyklů



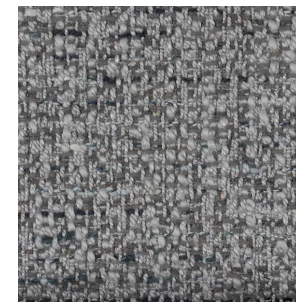
Kat. G



PEDROCCHI 3193
Col. 02



PEDROCCHI 3193
Col. 21



PEDROCCHI 3193
Col. 19

PEDROCCHI

Složeni: 10%LI 45%CO 25%VI 20%PL

Martindale: 30 00 cyklů



Kat. Kůže

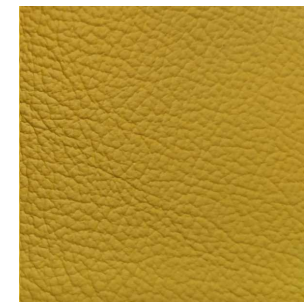
dostupnost a cena na dotaz



151



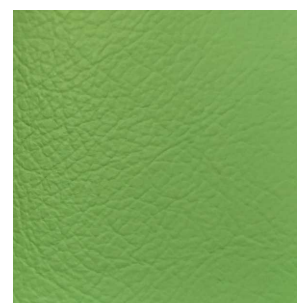
152



154



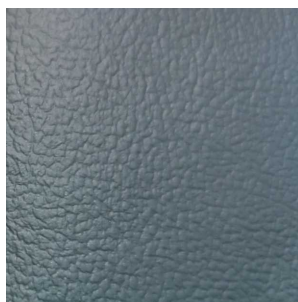
156



157



158



159



161

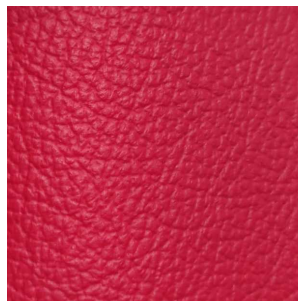


162

Složeni: kůže 100%

Kat. Kůže

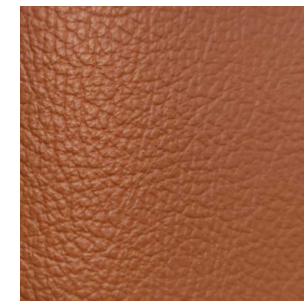
dostupnost a cena na dotaz



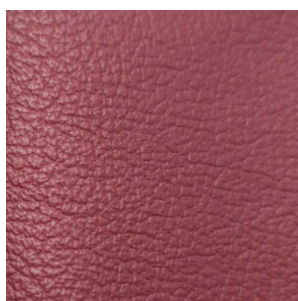
163



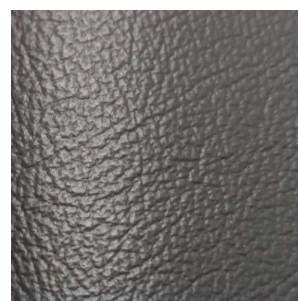
164



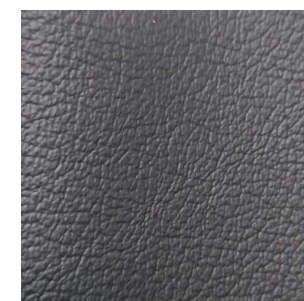
165



166



167



168



170



171



172

Složeni: kůže 100%

Kat. Kůže

dostupnost a cena na dotaz



173



174



176



177



178



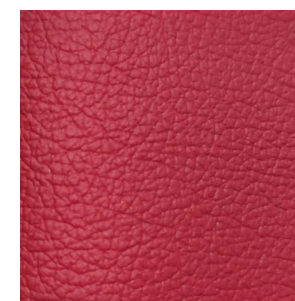
179



180



181



182

Složeni: kůže 100%

Kat. Kůže

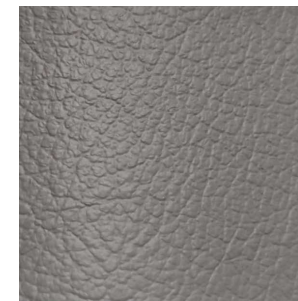
dostupnost a cena na dotaz



183



184



186



188



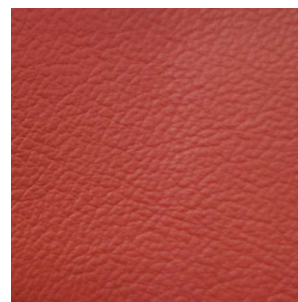
189



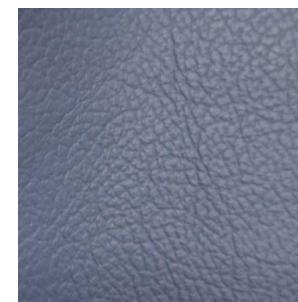
190



191



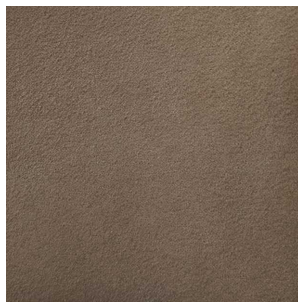
192



193

Složeni: kůže 100%

Čalounění: Postele



Nabuk 4263 Col. 12
ECOPELLE / ECOLEATHER
Složeni: 100% POL
Pro postele: KLEO, NOSTALGI,
PLATINUM, AMBRA, LUNA



Nabuk 4263 Col. 11
ECOPELLE / ECOLEATHER
Složeni: 100% POL
Pro postele: ALTEA, AMBRA,
KLEO, LUNA



Castro Col. 122-3B23
ECOPELLE / ECOLEATHER
Složeni: 71% PL 29% CO
Pro postele: LUNA, ACADEMY



Visone Col. 103-5912
ECOPELLE / ECOLEATHER
Složeni: 71% PL 29% CO
Pro postele: LUNA



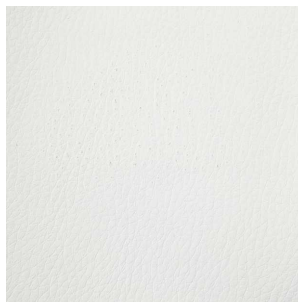
Mojito Col. 600
TESSUTO / FABRIC
Složeni: 100% PL
Pro postele: STORM (SOFT),
LUNA (RANO)



Grigio su pile 4384 Col.135
ECOPELLE / ECOLEATHER
Složeni: 19,5% COT, 26,3 % PES, 54,2% PU
Pro postele: ONDA



Čalounění: Postele



Time Col. 01 Bianco
ECOPELLE / ECOLEATHER
Složení: 10% CO, 20% PES, 1% PU, 69% PVC
Pro postele: DAMA BIANCA



Montreal Col. 03
ECOPELLE / ECOLEATHER
Složení: 3% PU, 75% PVC, 22% COT/PES
Pro postele: TORRIANI,
SIENA CAPITONNE



Panarea pile Col. 32
ECOPELLE / ECOLEATHER
Složení: 3% PU 75% PVC, 22% POLY
Pro postele: NOSTALGIA, SIENA



Panarea pile Col. 037
ECOPELLE / ECOLEATHER
Složení: 3% PU 75% PVC 22% POLY
Pro postele: BAROCCO



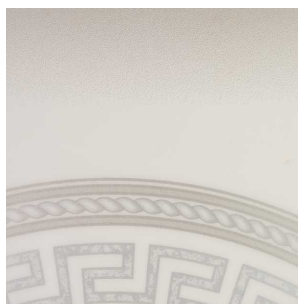
7836 Col. 01 ORO
ECOPELLE / ECOLEATHER
Složení: 100% POL
Pro postele: LEONARDO



MATERIÁL

Gold collection

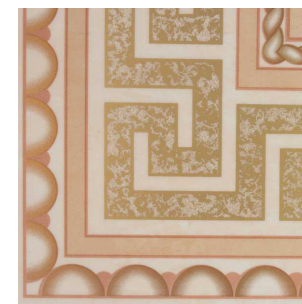
Lamino vysoký lesk



AIDA WHITE - SILVER



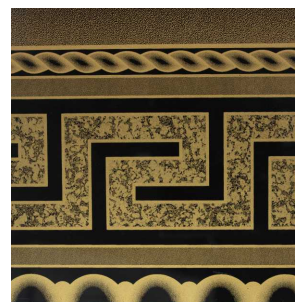
LEONARDO



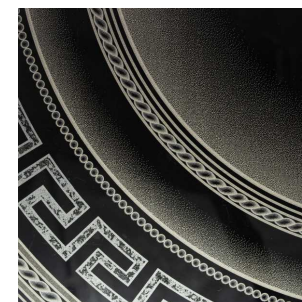
AIDA PIETRA



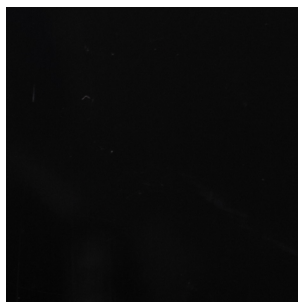
BAROCCO IVORY



AIDA BLACK - GOLD



AIDA BLACK - SILVER



BAROCCO BLACK
SILVER/GOLD



NABUCCO

Traditional collection

Dýha



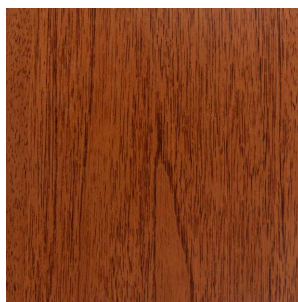
NOSTALGIA BIANCO
ANTICO / FANTASIA / GIOTTO



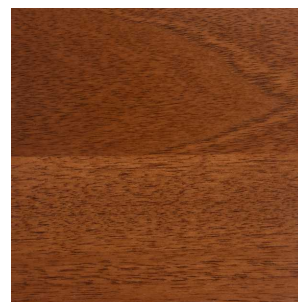
TORRIANI IVORY



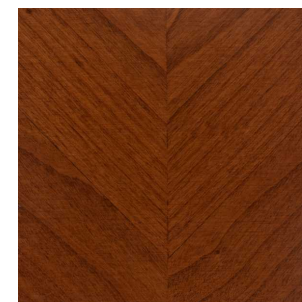
SIENNA IVORY



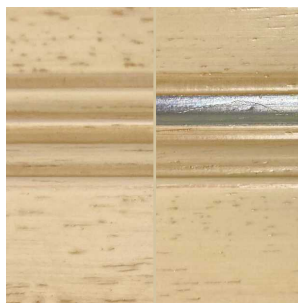
OŘECH
NOSTALGIA / FANTASIA / GIOTTO



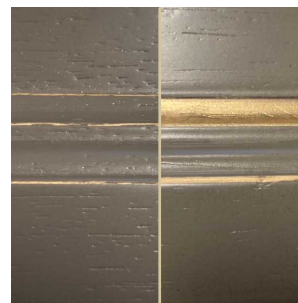
OŘECH TORRIANI



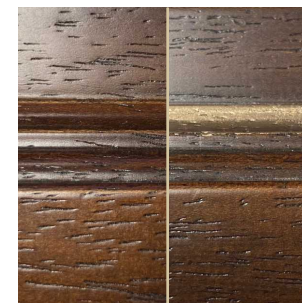
TŘEŠEŇ SIENNA



VERDI
KRÉMOVÁ S PATINOU



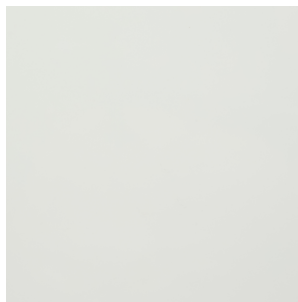
VERDI ŠEDÁ



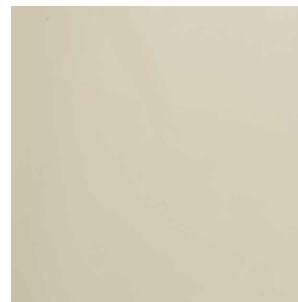
VERDI ANTICKÝ OŘECH

Modum collection

Lamino vysoký lesk



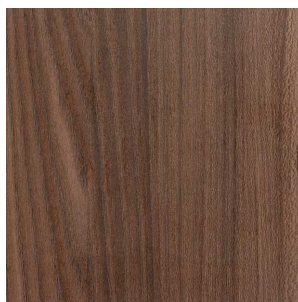
DAMABIANCA / ONDA /
ROMA / SMART



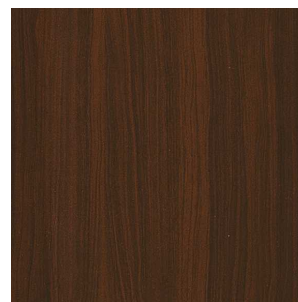
LA STAR / ALTEA



AMBRA / MAIA / ELITE
(BŘÍZA SVĚTLÉ PŘÍZEMNÍ)



STORM / AKADEMY
(MATNÝ TOBACCO JILM)



ONDA / ROMA
(OŘECH)



SMART / VOLARE / ELITE
(OŘECH)



PLATINUM / MAIA / TEKNO /
ELITE (BŘÍZA TMAVÉ PŘÍZEMNÍ)
ARMONIA / KROMA



KROMA / VOLARE

ITALIER

www.italier.cz info@italier.cz +420 774 431 196