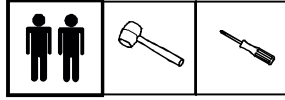


# NOSTALGIA

## VETRINA 2/3 ANTE

## LIBRERIA 2/3 ANTE

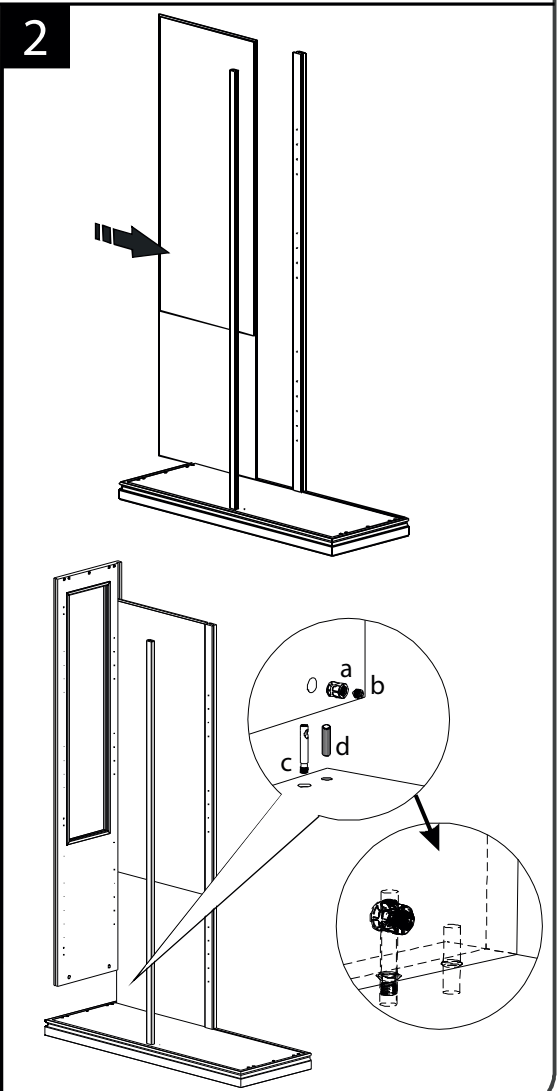
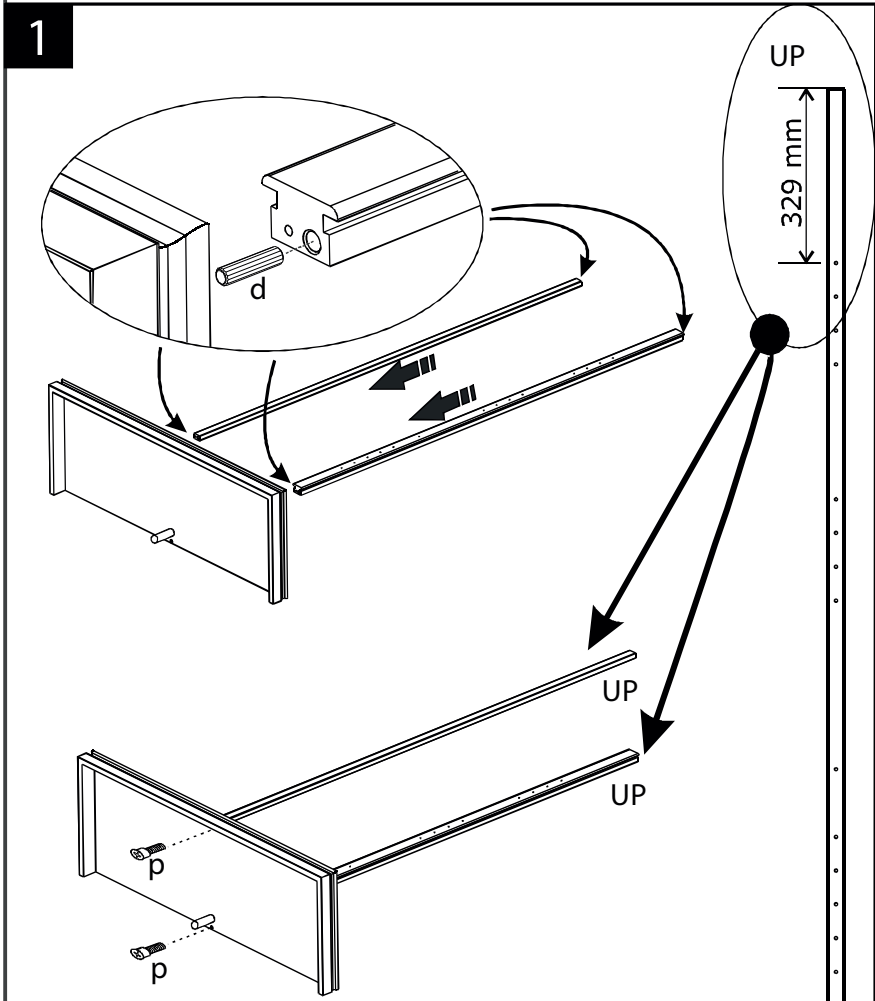
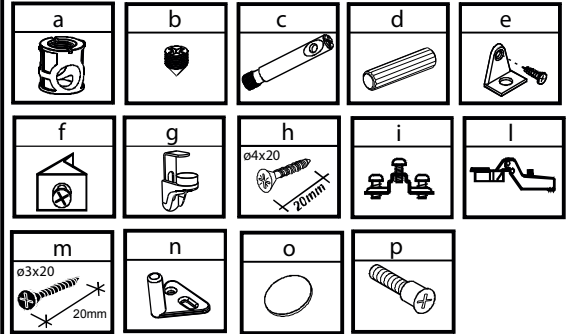
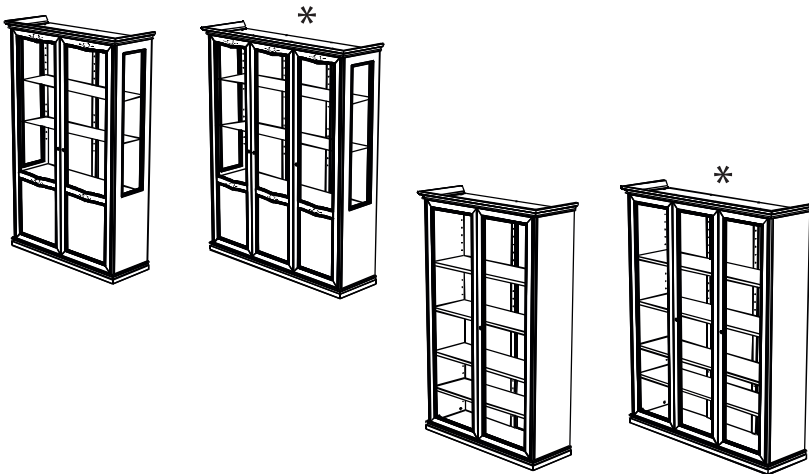
- NOCE
- FRASSINO



Please read this sheet prior to assembly to familiarise yourself with the various stages of construction. Do not destroy any packaging until you are certain that you have all the necessary parts for the assembly. The manufacturer reserves the right to alter specifications without prior notice.

**IMPORTANT NOTES:**

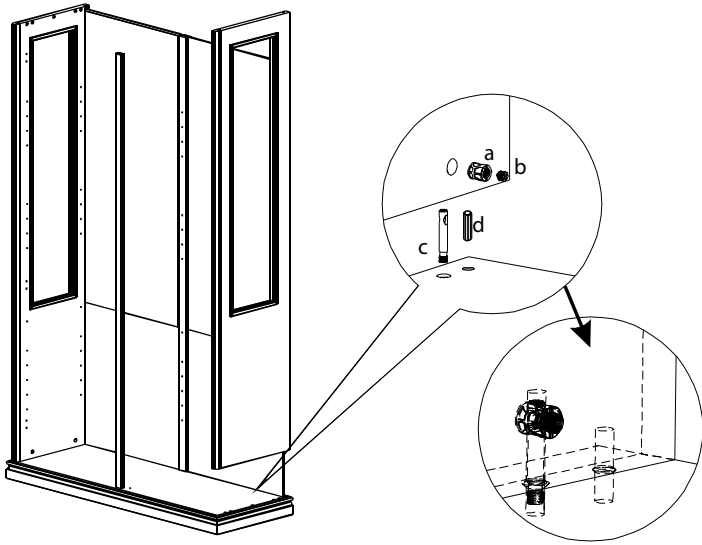
- 1-Please ensure that packaging is disposed of in a safe environmentally friendly way.
- 2-There are small components used in the fitting. These loose items must be kept away from young children whilst fitting your furniture.



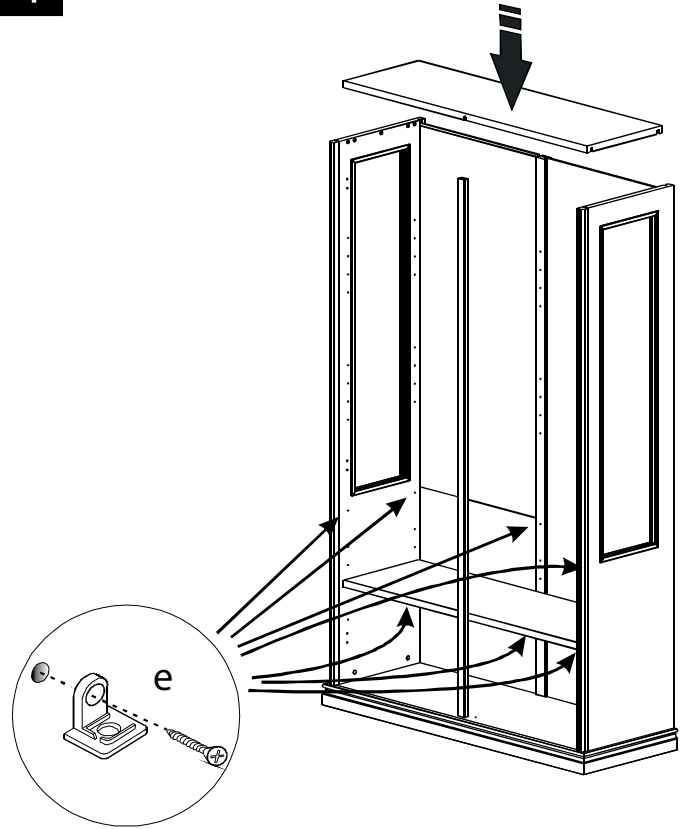
**\*!! WARNING !!**

FOR 3 DOORS VETRINE AND BOOKCASE SEE PAG.4

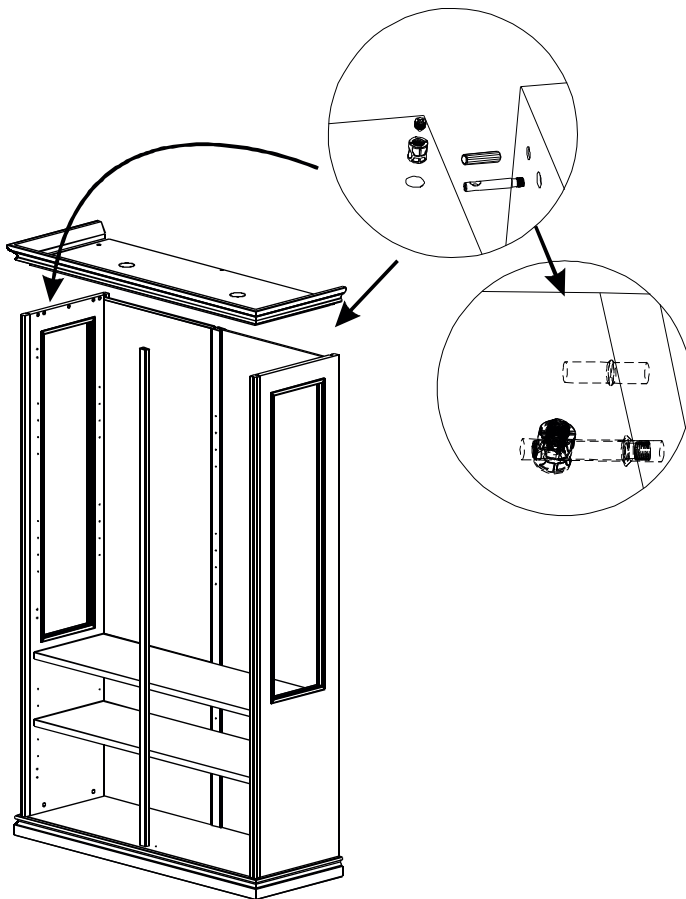
3



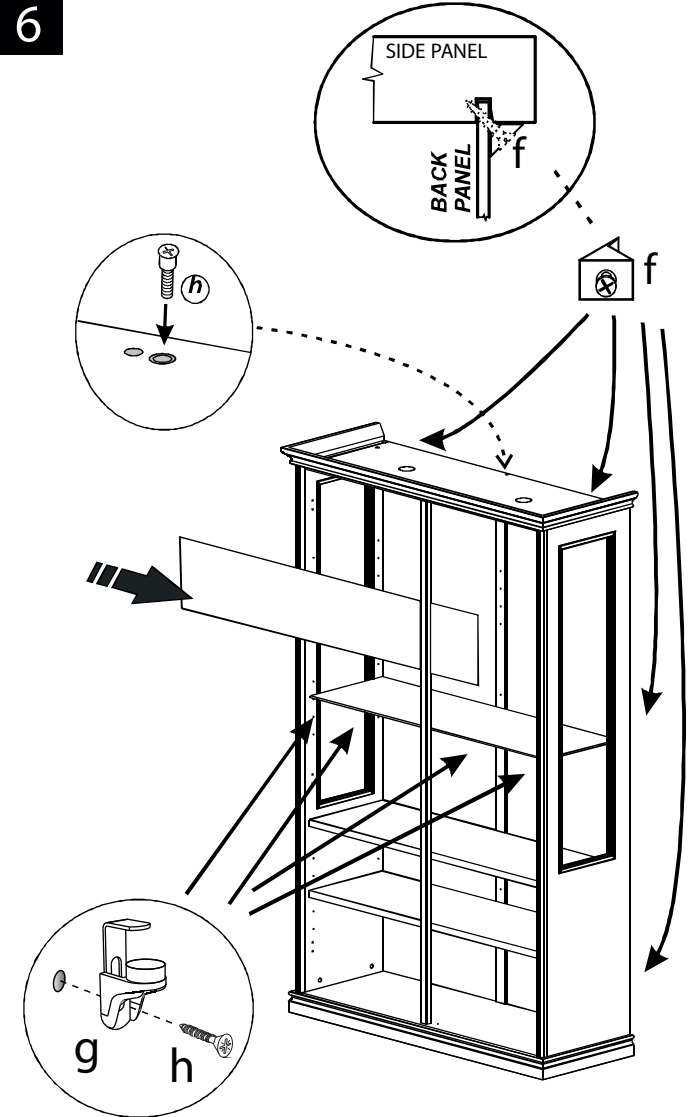
4



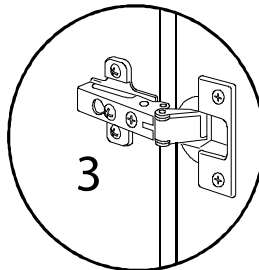
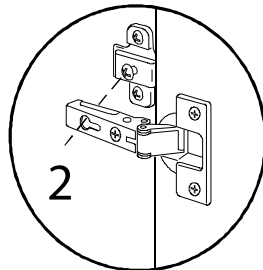
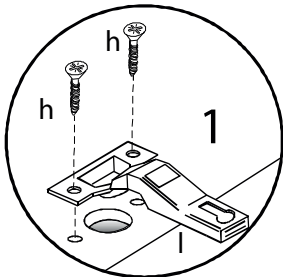
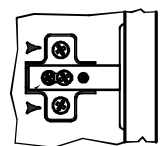
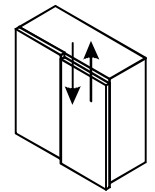
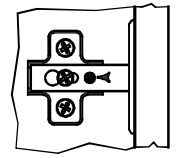
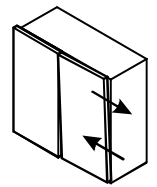
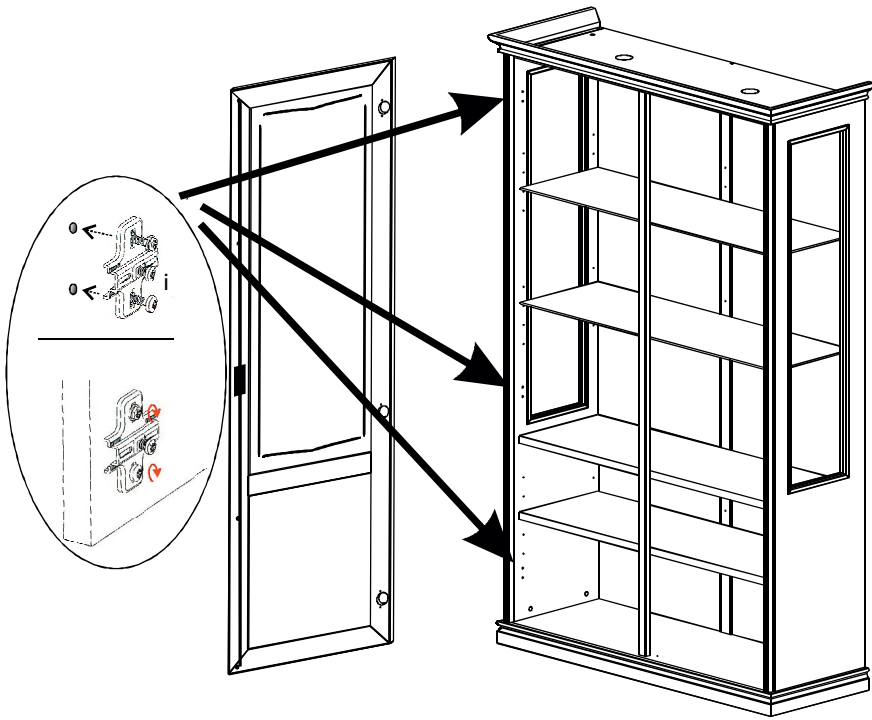
5



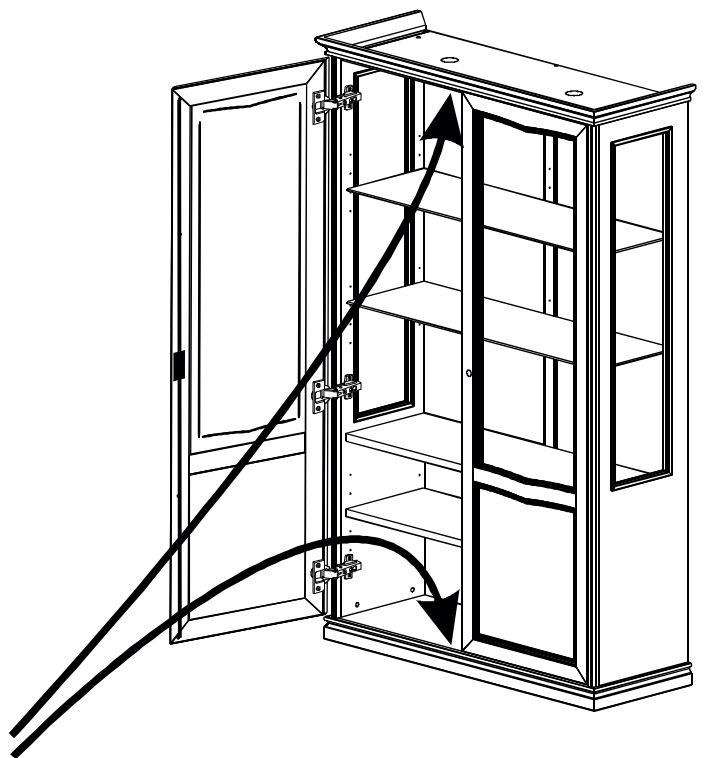
6



7

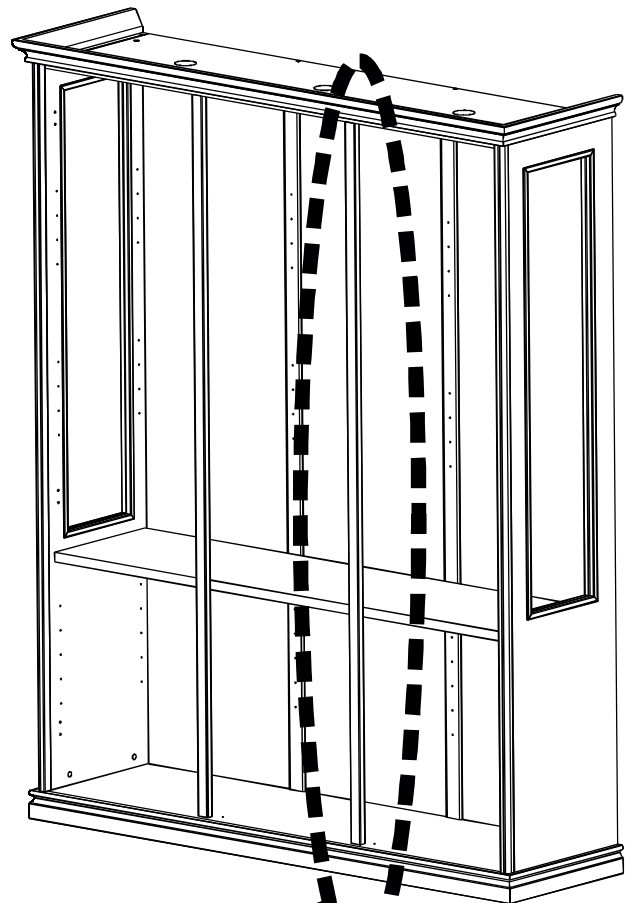
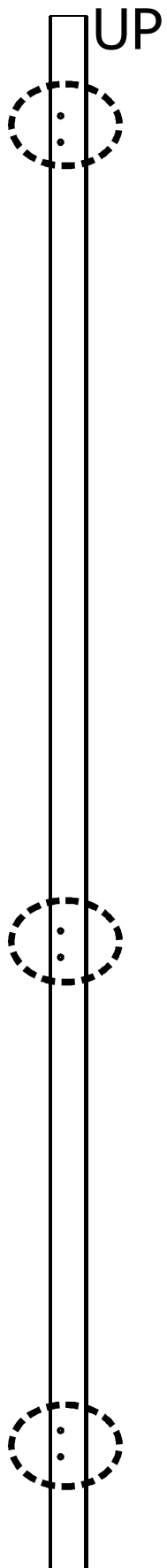


8



<b>!! WARNING !!</b>	<b>1</b>	
	<b>2</b>	

# \*!! WARNING !!



Attention:  
3 door vitrine and 3 door china. Assemble on the  
right side part the panel with holes for hinges.