

# VINCI

La possibilità di abbinare varie finiture, colori e grafiche, rende la madia un arredo inimitabile e ideale per ogni stile di casa e arredamento. I profili in metallo mettono in evidenza il design e gli accostamenti materici ecromatici.

The possibility of combining various finishes, colours and graphic designs makes this sideboard an inimitable, ideal piece of furniture for any home and furnishing style. The metal trim highlights not just the design but also the material and chromatic combinations.

Madia Vinci A04 cassetto rovere carbone canettè.  
Struttura e ante laccato opaco bromo 176.  
Profilo e basamento metallo antracite 160.  
L 216 P 51,5 H 93,5 cm

Cookie pouf / Grace M collezione quadri

Vinci A04 sideboard with reeded coal oak drawer. Matt bromite 176 lacquered carcass and doors.  
Anthracite 160 metal trim and base.  
W 216 D 51.5 H 93.5 cm

Cookie pouf / Grace M picture collection



Vinci



Madia Vinci cassetto laccato opaco arena canettè 178.  
Struttura ed ante laccato opaco arena 178. Profilo  
e basamento metallo arena 178.  
L 216 P 51,5 H 93,5 cm

Vinci sideboard with reeded matt arena 178 lacquered drawer.  
Carcass and doors in matt arena 178 lacquer.  
Arena 178 metal trim and base.  
L 216 D 51.5 H 93.5 cm



Vinci



Madia Vinci A04 cassetto rovere moka canettè. Struttura rovere moka e ante materico piacentina scura, profilo e basamento metallo antracite 160.  
L 198 P 51,5 H 93,5 cm

Ciko vano a giorno / Guccino pouf / Light spot tappeto

Vinci A04 sideboard with a reeded mocha oak drawer. Mocha oak carcass and textured dark piacentina door, anthracite 160 metal trim and base.  
W 198 D 51.5 H 93.5 cm

Ciko wall unit / Guccino pouf / Light spot rug



## Vinci



Madia Vinci struttura e top materico rovere carbone e cassetti rovere carbone canetté e ante grafica V002. Basamento e profili metallo antracite 160.  
Vinci sideboard with textured coal oak carcass and top, reeded coal oak drawers and door with graphic design V002. Anthracite 160 metal base and trim.



Madia Vinci struttura e top materico rovere carbone e cassetti rovere carbone canetté e ante grafica V1001. Basamento e profili metallo antracite 160.  
Vinci sideboard with coal oak carcass and top, reeded coal oak drawers and doors with graphic design V1001. Anthracite 160 metal base and trim.

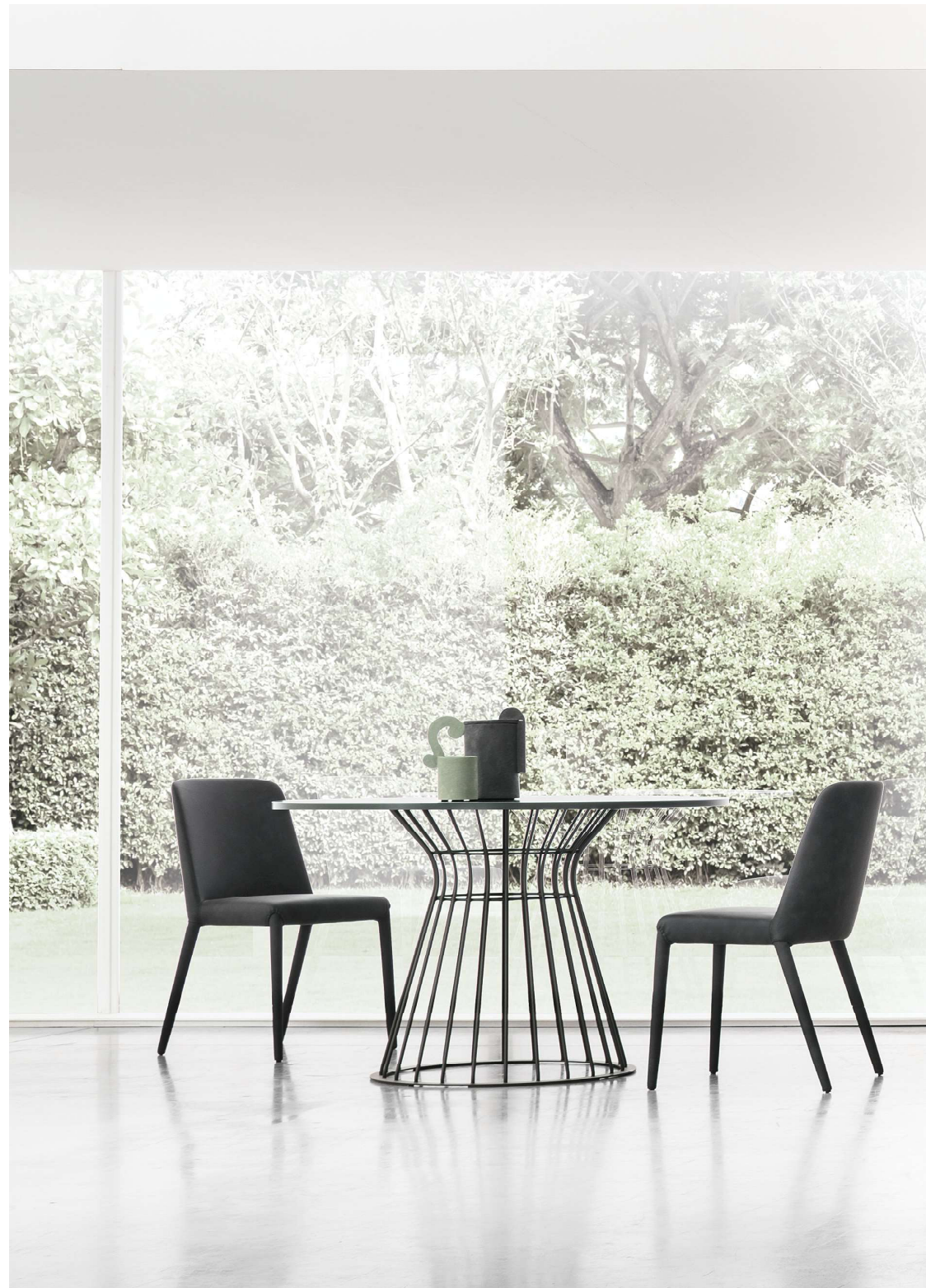


Madia Vinci cassetti laccato opaco canetté bromo 176, struttura e top laccato opaco bromo 176 e ante grafica V1003. Basamento e profili metallo bromo 176.  
Vinci sideboard with reeded matt bromite 176 lacquered drawers, matt bromite 176 lacquered carcass and top and doors with graphic design V1003. Bromite 176 metal base and trim.



Madia Vinci cassetti laccato opaco canetté carta da zucchero 155, struttura e top laccato carta da zucchero 155 e ante grafica V005. Basamento e profili metallo carta da zucchero 155.  
Vinci sideboard with reeded matt blue grey 156 lacquered drawers, blue grey 155 lacquered carcass and top and doors with graphic design V005. Blue grey 155 metal base and trim.

Vinci



Madia Vinci A01 struttura e top materico rovere sabbia, ante materico rovere sabbia con grafica V1101W. Basamento e profili metallo antracite 160.  
L 216 P 51,5 H 93,5 cm

Brigitte tavolo / Betty sedie

Vinci A01 sideboard with textured sand oak carcass and top, textured sand oak doors with graphic design V1101W. Anthracite 160 metal base and trim.  
W 216 D 51.5 H 93.5 cm

Brigitte table / Betty chairs



## Vinci



Madia Vinci A01 struttura materico rovere sabbia, grafica V1103W.  
Basamento e profili metallo antracite 160.  
Vinci A01 sideboard with textured sand oak carcass, graphic design V1103W.  
Anthracite 160 metal base and trim.



Madia Vinci A01 struttura materico rovere sabbia, grafica V1102W.  
Basamento e profili metallo antracite 160.  
Vinci A01 sideboard with textured sand oak carcass, graphic design V1102W.  
Anthracite 160 metal base and trim.



Vinci

Madia Vinci struttura laccato opaco carta da zucchero 155, grafica V004.  
Profili e basamento metallo antracite 160.  
L 216 P 51,5 H 93,5 cm

Visage 1 e 2 quadri tela / Wave tappeto

Vinci sideboard with matt blue grey 155 lacquered carcass, graphic design V004.  
Anthracite 160 metal trim and base.  
W 216 D 51,5 H 93,5 cm

Visage 1 and 2 canvas pictures / Wave rug



## Vinci



Madia Vinci struttura laccato opaco arena 178, ante grafica V1005, profili e basamento metallo arena 178.  
Vinci sideboard with matt arena 178 lacquered carcass, doors with graphic design V1005, arena 178 metal trim and base.



Madia Vinci struttura laccato opaco ghiaccio 173, ante grafica V1009, profili e basamento metallo ghiaccio 173.  
Vinci sideboard with matt ice 173 lacquered carcass, doors with graphic design V1009, ice 173 metal trim and base.



Madia Vinci struttura laccato opaco bromo 176, ante grafica V1008, profili e basamento metallo bromo 176.  
Vinci sideboard with matt bromite 176 lacquered carcass, doors with graphic design V1008, bromite 176 metal trim and base.

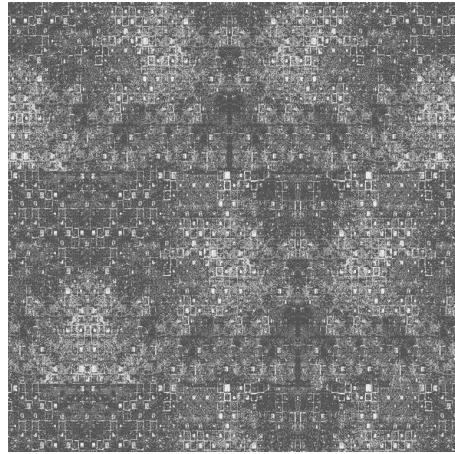


Madia Vinci struttura laccato opaco ghiaccio 173, ante grafica V1002, profili e basamento metallo ghiaccio 173.  
Vinci sideboard with matt ice 173 lacquered carcass, doors with graphic design V1002, ice 173 metal trim and base.

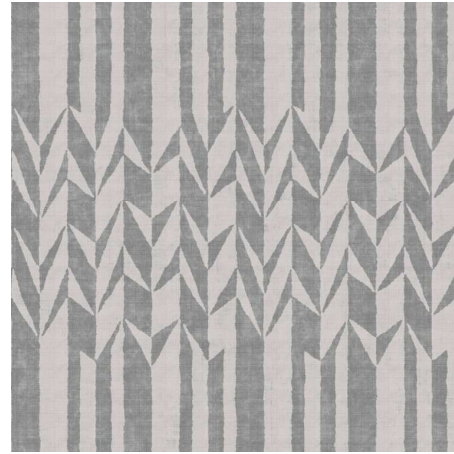


GRAFICHE PER MADIA VINCI / GRAPHIC DESIGNS FOR VINCI SIDEBOARD

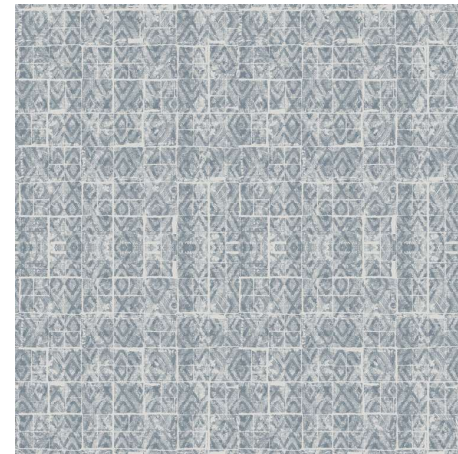
Grafica stampata su pannello poro aperto.  
Graphic design printed on open-pore panel.



V002



V004



V005



V1001



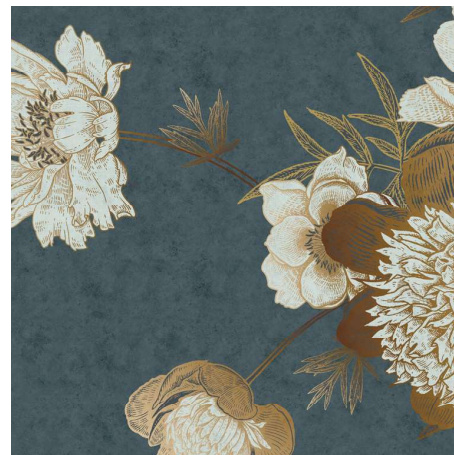
V1002



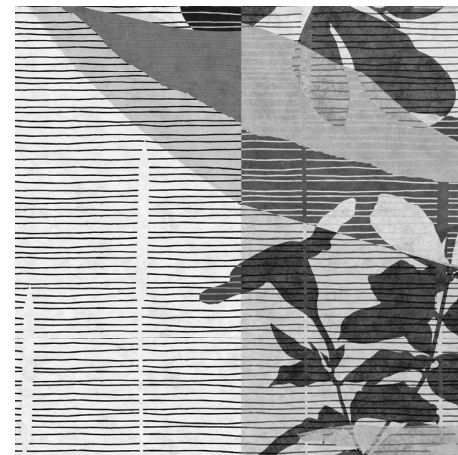
V1003



V1005



V1008



V1009

Grafica stampata su pannello rovere sabbia.  
Graphic design printed on sand oak panel.



V1101W



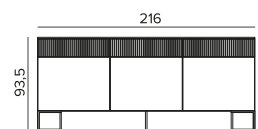
V1102W



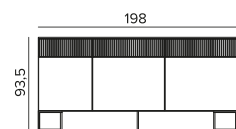
V1103W

# Vinci

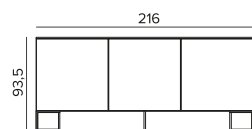
L/W 216 P/D 51 H 93,5 cm



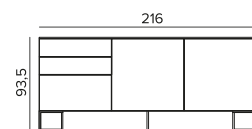
L/W 198 P/D 51 H 93,5 cm



L/W 216 P/D 51 H 93,5 cm



L/W 216 P/D 51 H 93,5 cm



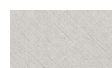
Per altre composizioni vedi listino prezzi.  
For other configurations see the price list.

## FINITURE STRUTTURA E FRONTALI / STRUCTURE AND DOOR FINISHES

### MT 1/ONE



**MT NAM**  
Noce ambrata  
Amber walnut



**MT CNV**  
Carvas



**MT ALP**  
Alpaca

### MT PREMIUM MATERICO - TEXTURE

### MT PREMIUM MATERICO OPACO - MATT TEXTURED



**MT OC BG**  
Bianco gesso  
Chalk white



**MT OC MP**  
Madreperla  
Mother of pearl



**MT OC ARN**  
Arena



**MT OC BA**  
Basalto  
Basalt



**MT OC AN**  
Antracite  
Anthracite

### MT PREMIUM MATERICO ESSENZA - TEXTURED WOOD



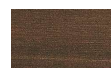
**MT RSB**  
Rovere sabbia  
Sand oak



**MT RMK**  
Rovere moka  
Mocha oak



**MT RC**  
Rovere carbone  
Coal oak



**MT RT**  
Rovere termocotto  
Heat-treated oak



**MT FO**  
Frassino orientale  
Eastern ash



**MT RNC**  
Nodato chiaro  
Light knotted



**MT RNS**  
Nodato scuro  
Dark knotted



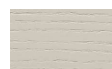
**MT RNN**  
Rovere nodato naturale  
Natural oak knotted

### MT PREMIUM MATERICO NODATO - KNOTTED TEXTURED

### MT PREMIUM MATERICO PORO APERTO - OPEN PORE TEXTURED



**MT PA BG**  
Bianco gesso  
Chalk white



**MT PA MP**  
Madreperla  
Mother of pearl

### MT PREMIUM MATERICO CEMENTO - TEXTURED CEMENT



**MT CC**  
Cemento chiaro  
Light cement

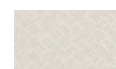


**MT CV**  
Cemento cava  
Cava cement

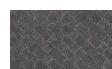


**MT CS**  
Cemento scuro  
Dark cement

### MT SPECIAL MATERICO - TEXTURED



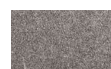
**MT INT C**  
Intreccio chiaro  
Light intreccio



**MT INT S**  
Intreccio scuro  
Dark intreccio



**MT PSC**  
Piasentina chiara  
Light piasentina



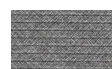
**MT PSS**  
Piasentina scura  
Dark piasentina



**MT GR**  
Graniglia  
Gravel grey



**MT OBR**  
Ossido brunito  
Burnished oxide



**MT PG**  
Paglia Grigio  
Grey straw



**MT PB**  
Paglia Bronzo  
Bronze straw



**MT MB**  
Maya bronze

### LACCATI METALLIZZATI - METALLIC LACQUERED



**OCM 090**  
Bronzo  
Bronze



**OCM 091**  
Ghisa  
Cast iron



**OCM 092**  
Ottone  
Brass

### LACCATI PORO APERTO - LACQUERS OPEN PORE



**PA**  
Laccati poro aperto (vedi pag. 436)  
Open-pore lacquers (see page 436)

### LACCATI OPACHI O LUCIDI - MATT OR GLOSS LACQUERS



**OC - LC**  
Colori laccati opachi e lucidi a campionario (vedi pag. 436)  
Choice of matt and gloss lacquer colours from our range (see page 436)

### LEGNO - WOOD



**LGN CRSB**  
Rovere sabbia  
canettè  
Reeded sand  
oak



**LGN CRMK**  
Rovere moka  
canettè  
Reeded mocha  
oak



**LGN CRC**  
Rovere carbone  
canettè  
Reeded coal  
oak

Legno disponibile solo per i frontali.  
Wooden finishes only available for doors.

## FINITURE BASAMENTO E PROFILO / BASE AND PROFIL FINISHES

### DI SERIE - STANDARD



**Antracite 160**  
Anthracite 160

### LACCATI OPACHI - MATT LACQUERS



**OC**  
Colori laccati opachi a campionario (vedi pag. 436)  
Choice of matt lacquer colours from our range (see page 436)