

# DIAGONAL

Un complemento moderno ed essenziale caratterizzato dalla presenza di tagli diagonali che creano vani a giorno: la madia è ricca di soluzioni pratiche per contenere ed esporre attraverso giochi di pieni e vuoti.

A modern, essential accessory characterised by the presence of diagonal cuts that create open spaces: this sideboard is full of practical solutions for holding and displaying through games of visible and hidden.

Madia Diagonal Var. A struttura laccato opaco smoke 128 vano a giorno e basamento laccato opaco pomice 152. L 219 P 51,5 H 85,5 cm

Brigitte tavolino

Diagonal sideboard, Var. A, matt smoke 128 lacquered carcass, matt pumice 152 lacquered open compartment and base. L 219 D 51.5 H 85.5 cm

Brigitte coffee table



## Diagonal

Madia Diagonal Var. B struttura materico rovere moka frontali materico rovere moka e materico cemento cava. Top gres calatorao silk 070. Vano a giorno e basamento metallo antracite 160. L 219 P 51,5 H 85,5 cm

Wire tavolo / Betty sedia / Raster vano a giorno

Diagonal sideboard, Var. B, textured mocha oak carcass, textured mocha oak and textured cava cement front. Calatorao silk 070 stoneware top. Anthracite 160 metal open shelf unit and base. W 219 D 51.5 H 85.5 cm

Wire table / Betty chairs / Raster open shelf unit



## Diagonal

Madia Diagonal Var. A struttura materico rovere sabbia,  
Basamento e vano a giorno metallo antracite 160.  
L 219 P 51,5 H 85,5 cm

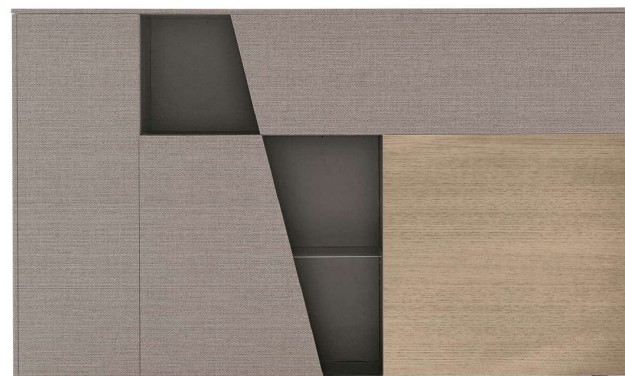
Ring mensole / Loft poltroncina  
Guccino pouf / Icones tappeto

Diagonal sideboard, Var. A, textured sand oak carcass,  
base and frame in anthracite 160 metal.  
W 219 D 51.5 H 85.5 cm

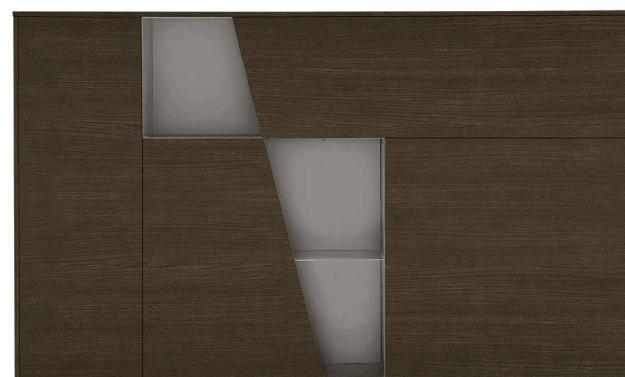
Ring shelves / Loft armchair  
Guccino pouf / Icones rug



## Diagonal



Madia Diagonal struttura materico rovere sabbia e materico alpaca, vani a giorno metallo antracite 160.  
Diagonal sideboard with textured sand oak and textured alpaca carcass, anthracite 160 metal compartments.



Madia Diagonal struttura materico rovere moka, vani a giorno metallo laccato salina 163.  
Diagonal sideboard with textured mocha oak carcass, salt grey 163 lacquered metal compartments.

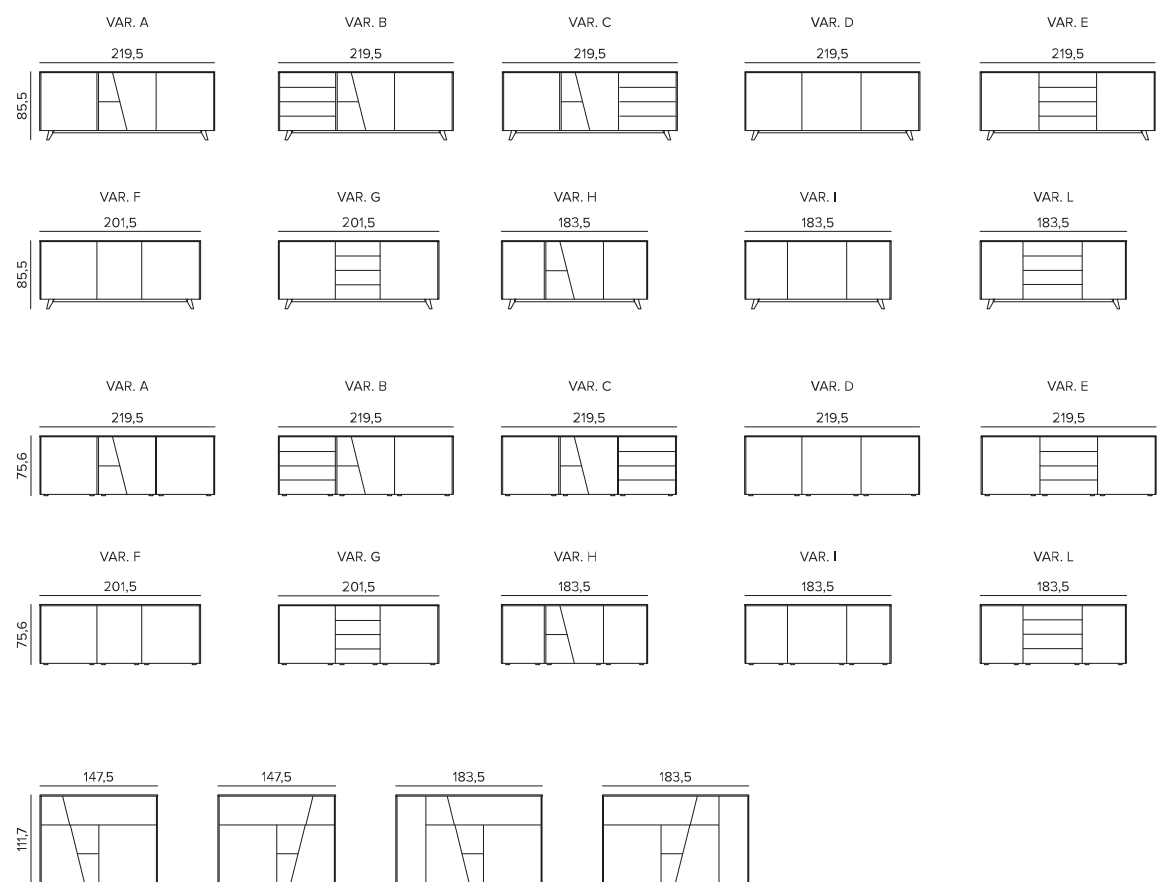


Madia Diagonal struttura materico opaco bianco gesso e materico nodato scuro, vani a giorno metallo antracite 160.  
L 183 P 51,5 H 111,5 cm

Diagonal sideboard with textured matt chalk white and textured dark knotted carcass, anthracite 160 metal compartments.  
W 183 D 51,5 H 111,5 cm

## Diagonal

P/D 51, 5 CM



## FINITURE STRUTTURA E FRONTALI / STRUCTURE AND DOOR FINISHES

### MT 1/ONE



**MT NAM**  
Noce ambr  
Amber walnut



**MT CNV**  
Canvas



**MT ALP**  
Alpaca



**MT OC BG**  
Bianco gesso  
Chalk white



**MT OC MP**  
Madreperla  
Mother of pearl



**MT OC ARN**  
Arena



**MT OC BA**  
Basalto  
Basalt



**MT OC AN**  
Antracite  
Anthracite

### MT PREMIUM MATERICO ESSENZA - TEXTURED WOOD



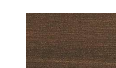
**MT RSB**  
Rovere sabbia  
Sand oak



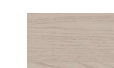
**MT RMK**  
Rovere moka  
Mocha oak



**MT RC**  
Rovere carbone  
Coal oak



**MT RT**  
Rovere termocotto  
Heat-treated oak



**MT FO**  
Frassino oriente  
Eastern ash



**MT RNC**  
Nodato chiaro  
Light knotted



**MT RNS**  
Nodato scuro  
Dark knotted



**MT RNN**  
Rovere nodato naturale  
Natural oak knotted

### MT PREMIUM MATERICO PORO APERTO - OPEN PORE TEXTURED

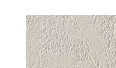


**MT PA BG**  
Bianco gesso  
Chalk white



**MT PA MP**  
Madreperla  
Mother of pearl

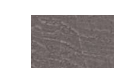
### MT PREMIUM MATERICO CEMENTO - TEXTURED CEMENT



**MT CC**  
Cemento chiaro  
Light cement



**MT CV**  
Cemento cava  
Cava cement



**MT CS**  
Cemento scuro  
Dark cement

### MT SPECIAL MATERICO - TEXTURED



**MT INT C**  
Intreccio chiaro  
Light intreccio



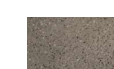
**MT INT S**  
Intreccio scuro  
Dark Intreccio



**MT PSC**  
Piasentina chiara  
Light piasentina



**MT PSS**  
Piasentina scura  
Dark piasentina



**MT GR**  
Graniglia  
Gravel grey



**MT OBR**  
Ossido brunito  
Burnished oxide



**MT PG**  
Paglia Grigio  
Grey straw



**MT PB**  
Paglia Bronzo  
Bronze straw



**MT MB**  
Maya bronze

### LEGNO - WOOD



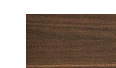
**LGN RSB**  
Rovere sabbia  
Sand oak



**LGN RMK**  
Rovere moka  
Mocha oak



**LGN RC**  
Rovere carbone  
Coal oak



**LGN RT**  
Rovere termocotto  
Heat-treated oak

### LACCATI METALLIZZATI - METALLIC LACQUERED



**OCM 090**  
Bronzo  
Bronze



**OCM 091**  
Ghisa  
Cast iron



**OCM 092**  
Ottone  
Brass

### LACCATI PORO APERTO LACQUERS OPEN PORE



**PA**  
Laccati poro aperto (vedi pag. 436)  
Open-pore lacquers (see page 436)

I legni sono disponibili solo per i frontali di Diagonal.  
Wood finishes available for Diagonal fronts only.

### LACCATI OPACHI O LUCIDI MATT OR GLOSS LACQUERS

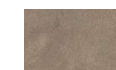


**OC - LC**  
Colori laccati opachi e lucidi a campionario (vedi pag. 436)  
Choice of matt and gloss lacquer colours from our range (see page 436)

### GRES - STONEWARE



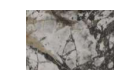
**012**  
Pietra Antracite



**032**  
Fokos Terra



**033**  
Fokos Piombo



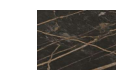
**034**  
Urban Marble



**035**  
Amani



**040**  
Calacatta Oro



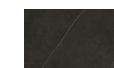
**041**  
Noir Desir



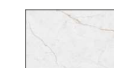
**042**  
Emperador



**043**  
Nero Greco



**070**  
Calatarao Silk



**071**  
Abu Dhabi Silk



**072**  
Pulpis Silk

Gres isonibile solo per top.  
Stoneware available for tops only.

## FINITURE BASAMENTO E VANO / BASE AND OPEN UNIT FINISHES

### DI SERIE - STANDARD



**Antracite 160**  
Anthracite 160

### LACCATI OPACHI MATT LACQUERS



**OC**  
Colori laccati opachi a campionario (vedi pag. 436)  
Choice of matt lacquer colours from our range (see page 436)



**Antracite 160**  
Anthracite 160

**Ottone**  
Brass

Basamento e gambe finituraantracite,  
pedino regolabile finitura ottone.  
Base and legs in anthracite finish,  
brass finish adjustable foot.

## FINITURE BASAMENTO TRACKS / TRACKS BASE FINISHES