

VZORNÍK SANTALUCIA - HOMOY

ITALIER

VZORNÍK

KATEGORIE A

BARI
LONDON

7
8

KATEGORIE B

MILANO
ROMA
VENEZIA
GENOVA
NAPOLI
PARIS

10
11
12
13
14
15

MATERIÁLY

LAMINO 17
VENEERED WOOD 18
ECO COLOR 19
RAL MATT LACQUERED 20
MATT/GLOSSY LACQUERED 21-23
SCULPT WOOD MATERIAL 24
SCULPT MATT LACQUERED 25-27
MATT LACQUERED TRIAL 28-30
CONCRETE 31
LAMINO 32
TRAMA / TISSU 33

MATERIÁLY

VNITŘNÍ POVRCH
ZRCADLO
SPECIÁLNÍ SKLO
DEKOR KOVŮ

34
35
36
37

SYMBOLY PRO OŠETŘENÍ TEXTILIÍ



Pouze ruční praní / *Hand wash only*



Prát při maximální teplotě 30° / *Wash at max. temp. 30°*



Prát při maximální teplotě 30°, se sníženými otáčkami
/ *Wash at max. temp. 30° and with reduced mechanical action*



Prát při maximální teplotě 40°
/ *Wash at max. temp. 40°*



Prát při maximální teplotě 40°, se sníženými otáčkami
/ *Wash at max. temp. 40° and with reduced mechanical action*



Prát při maximální teplotě 60°
/ *Wash at max. temp. 60°*



Prát při maximální teplotě 60°, se sníženými otáčkami
/ *Wash at max. temp. 60° and with reduced mechanical action*



Výrobek se nesmí prát / *Do not wash in water*



Nesušit v bubnové sušičce / *Wash without tumble dry*



Výrobek se nesmí bělit / *Do not use bleach*



Žehlení při minimální teplotě / *Iron at low temperatures*



Žehlení při střední teplotě / *Iron at medium temperatures*



Žehlení při maximalní teplotě / *Ironed at high temperatures*



Protipožární tkanina.



Žehlit na rubové straně při nízkých teplotách / *Iron on reverse side and at low temperatures*



Nežehlit / *Do not iron*



Výrobek je možné čistit chemickými prostředky
/ *Dry clean with any solvent*



Suché čištění jakýmkoli rozpouštědlem, s výjimkou trichlorethylenu
/ *Dry clean with any solvent, trichloroethylene excluded.*



Suché čištění trichlorethylenem a jemné praní. Nečistěte v prádelnách na mince.
/ *Dry clean with trichloroethylene and delicate wash. Do not dry clean at coin laundries.*



Výrobek se nesmí chemický čistit / *Do not dry clean*



Zavěste ve vodorovné poloze
/ *Hang up in horizontal position*



Zavěste bez mačkání / *Hang up without squeezing*



Lze sušit v bubnové sušičce
/ *Tumble dry*



Sušení při nízké teplotě / *Tumble dry at reduced temperature*



Sušení při normální teplotě / *Tumble dry at normal temperature*



Nesušit v bubnové sušičce / *Do not tumble dry*



Tkanina vhodná pro venkovní použití.

SLOŽENÍ LÁTEK

Kód

| | | |
|------------|------------------|---------------------|
| WO | Vlna | Wool |
| WP | Alpaka | Alpaca |
| WL | Lama | Lama |
| WK | Velbloud | Camel |
| WS | Kašmír | Kashmir |
| WM | Mohér | Mohair |
| WA | Angora | Angora |
| WG | Vikuně | Vicuna |
| WY | Jak | Yak |
| WU | | Guanaco |
| WB | Bobr | Beaver |
| WT | Vydra | Otter |
| HA | Srst | Hair |
| SE | Hedvábí | Silk |
| CO | Bavlna | Cotton |
| KP | Kapok | Kapok |
| LI | Len | Flax |
| CA | Pravé konopí | True hemp |
| JU | Juta | Jute |
| AB | Abaka | Abaca (Manila hemp) |
| AL | Alfa | Alfa |
| CC | Kokosové vlákno | Coir (coconut) |
| GI | Janovec | Broom |
| RY | Hedvábí | Rayon |
| PES | Polyester | Polyester |
| PVC | Polyvinilchlorid | Polyvinylchloride |

Kód

| | | |
|-----------|--------------|-----------------------|
| KE | Kenaf | Kenaf (Hibiscus hemp) |
| RA | Ramie | Ramie |
| SI | Sisal | Sisal |
| SN | | Sun |
| HE | | Henequen |
| MG | | Maguey |
| AC | Acetát | Acetate |
| AG | Alginát | Alginate |
| CU | Měď | Cupro |
| MD | | Modal |
| PR | | Protein |
| TA | Triacetát | Triacetate |
| VI | Viskóza | Viscose |
| PC | Akryl | Acrylic |
| CL | Chlorovlákn | Chlorofibre |
| FL | Fluorovlákn | Fluorofibre |
| MA | Modakryl | Modacrylic |
| PA | | Nylon |
| PL | | Polyester |
| PE | Polyethylen | Polyethylene |
| PP | Polypropylen | Polypropylene |
| PB | Polykarbamid | Polycarbamide |
| PU | Polyuretan | Polyurethane |

Kód

| | | |
|-----------|-----------------|-------------|
| VY | Vynylal | Vinylal |
| TV | | Trivinyl |
| EL | Guma | Elastodiene |
| EA | Elastan | Elastane |
| GL | Skleněné vlákno | Glass fibre |
| ME | Kov | Metal |
| | Kovový | Metallic |
| | Pokovené | Metallised |
| AS | Azbest | Asbestos |
| PI | Papír | Paper |

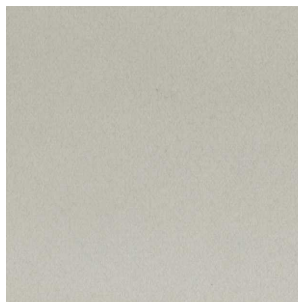
SPECIFICKÉ OZNAČENÍ

| | | |
|------------|-----------------------|----------------------------|
| IWS | Čistá střížní vlna | Pure virgin wool |
| WV | Ovčí vlna | Fleece wool |
| AF | Jiná vlákna | Other fibres |
| HL | | Cotton linen Union |
| TR | Zbytky textilu | Textile residues |
| | nebo neurčené složení | or unspecified composition |
| TS | Laminovaná tkanina | Laminated cloth |
| SC | Syntetický | Synthetic |

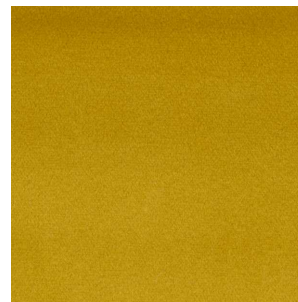
ČALOUNĚNÍ

KATEGORIE A

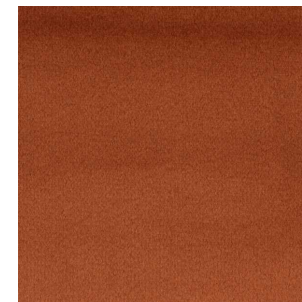
Kat. Bari



Art. BARI Col.01



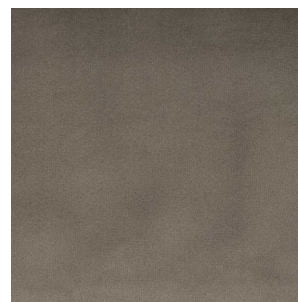
Art. BARI Col.26



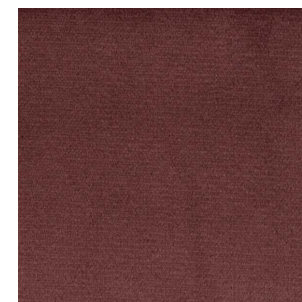
Art. BARI Col.07



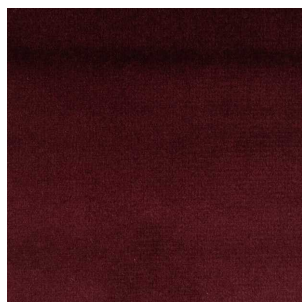
Art. BARI Col.56



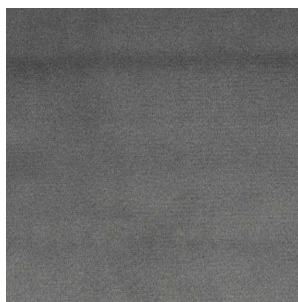
Art. BARI Col.130



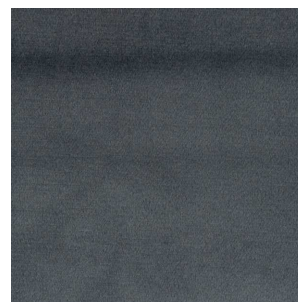
Art. BARI Col.80



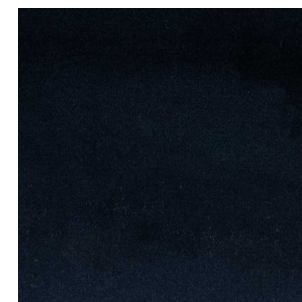
Art. BARI Col.90



Art. BARI Col.616



Art. BARI Col.617

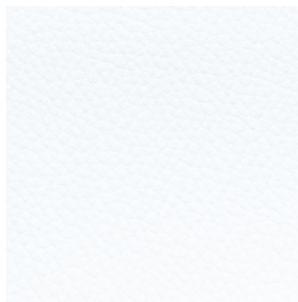


Art. BARI Col.666

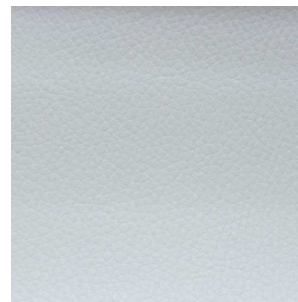
Složeni: 100% PL



Kat. London



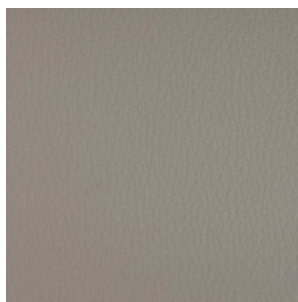
Art. LONDON Col.01



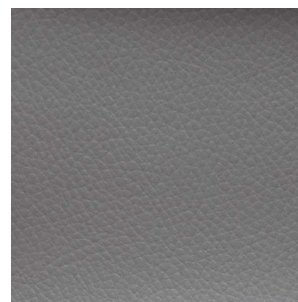
Art. LONDON Col.6776



Art. LONDON Col.6692



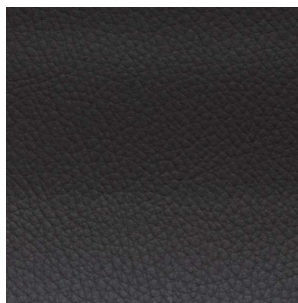
Art. LONDON Col.8854



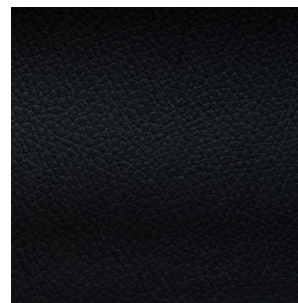
Art. LONDON Col.5800



Art. LONDON Col.8738



Art. LONDON Col.8857



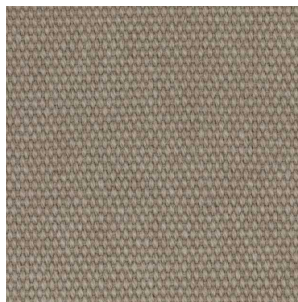
Art. LONDON Col.16

Složeni: 90% PVC, 6,5% PES, 3,5% CO



KATEGORIE B

Kat. Milano



Art. MILANO Col.20



Art. MILANO Col.130



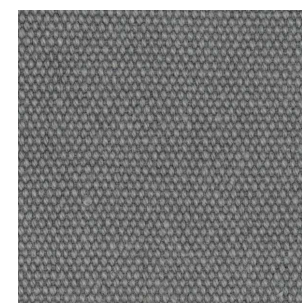
Art. MILANO Col.622



Art. MILANO Col.24



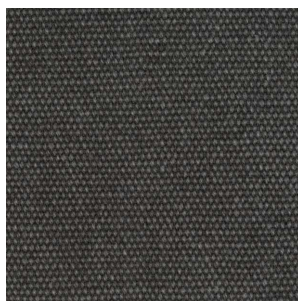
Art. MILANO Col.13



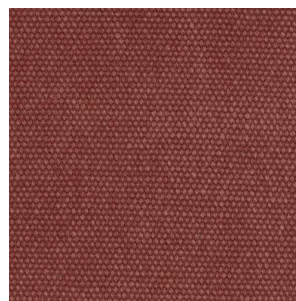
Art. MILANO Col.19



Art. MILANO Col.205



Art. MILANO Col.27



Art. MILANO Col.09



Art. MILANO Col.07

Složeni: 85% CO, 15%PL



Kat. Roma



Art. ROMA Col.10



Art. ROMA Col.12



Art. ROMA Col.46



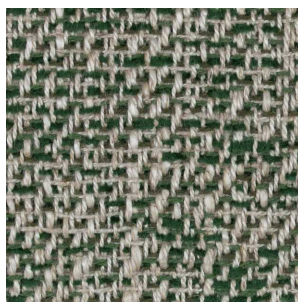
Art. ROMA Col.02



Art. ROMA Col.13



Art. ROMA Col.45

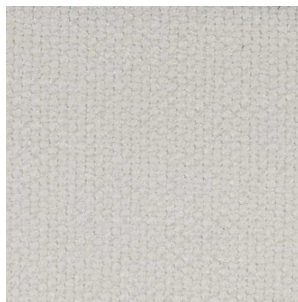


Art. ROMA Col.22

Složeni: 34% CO, 32%VI, 13%AC, 14%LI, 7%POL



Kat. Venezia



Art. VENEZIA Col.200



Art. VENEZIA Col.20



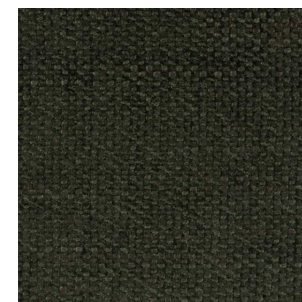
Art. VENEZIA Col.27



Art. VENEZIA Col.130



Art. VENEZIA Col.100



Art. VENEZIA Col.204



Art. VENEZIA Col.101



Art. VENEZIA Col.10



Art. VENEZIA Col.14

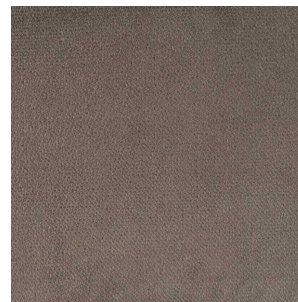
Složeni: 85% PL, 15%VI



Kat. Genova



Art. GENOVA Col.200



Art. GENOVA Col.130



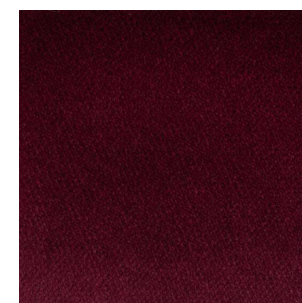
Art. GENOVA Col.002



Art. GENOVA Col.105



Art. GENOVA Col.615



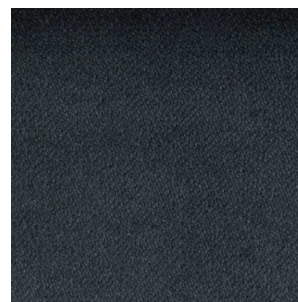
Art. GENOVA Col.10



Art. GENOVA Col.619



Art. GENOVA Col.616



Art. GENOVA Col.205



Art. GENOVA Col.666

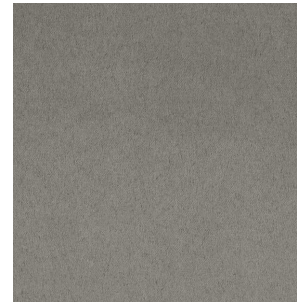
Složeni: 100% POL



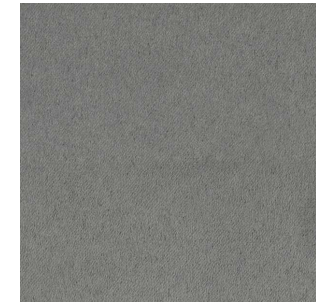
Kat. Napoli



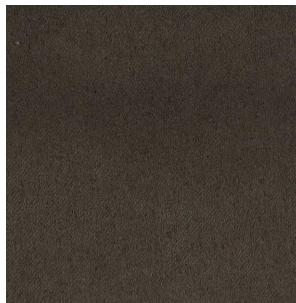
Art. Napoli Col.02



Art. Napoli Col.07



Art. Napoli Col.06



Art. Napoli Col.08



Art. Napoli Col.33

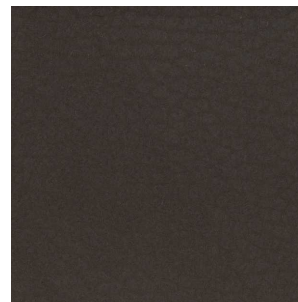
Složeni: 100% PL



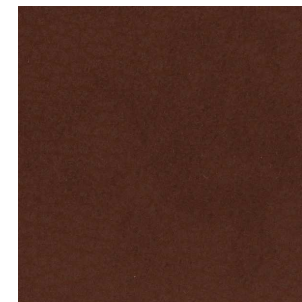
Kat. Paris



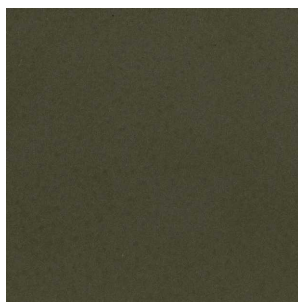
Art. PARIS Col.750



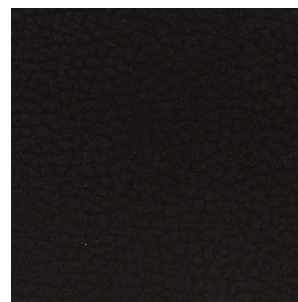
Art. PARIS Col.240



Art. PARIS Col.20



Art. PARIS Col.280



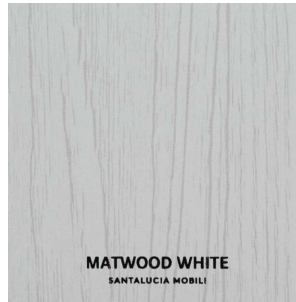
Art. PARIS Col.140

Složeni: 30% CO, 1% PU, 69% PVC

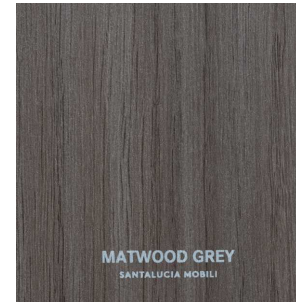


MATERIÁLŲ

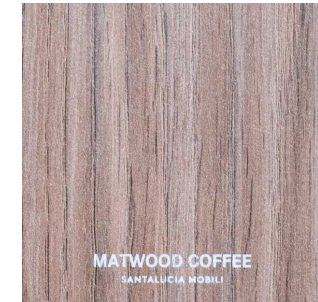
Kat. Lamino



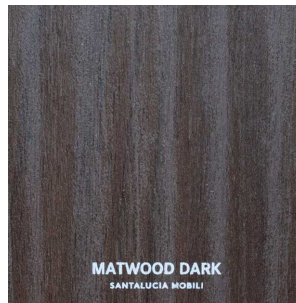
MATWOOD WHITE



MATWOOD GREY



MATWOOD COFFEE



MATWOOD DARK



MATWOOD HONEY

Kat. Veneered Wood Dýha



LEGNO STEPPA



LEGNO TUNDRA

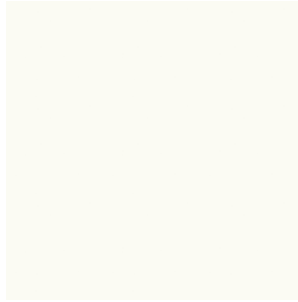


LEGNO GIUNGLA



LEGNO SAVANA

Kat. Eco Color
Lamino



ECO BIANCO



ECO LIMO

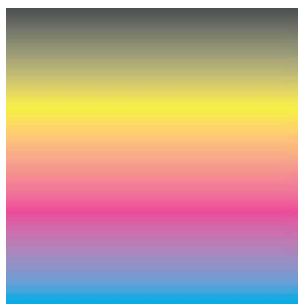


ECO PEPE



ECO MARNA

Kat. RAL Matt Lacquered
RAL Lak matný



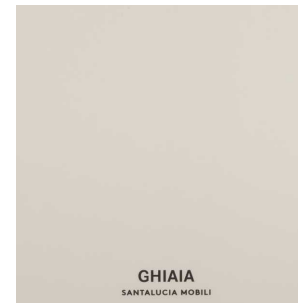
RAL

Kat. Matt / Glossy Lacquered
Matný / Lesklý lak



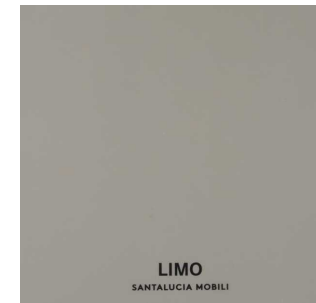
BIANCO
SANTALUCIA MOBILI

BIANCO



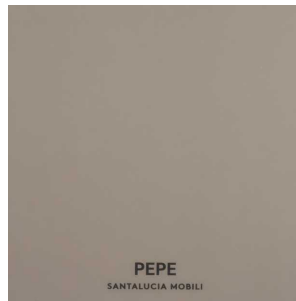
GHIAIA
SANTALUCIA MOBILI

GHIAIA



LIMO
SANTALUCIA MOBILI

LIMO



PEPE
SANTALUCIA MOBILI

PEPE



ANTIMONIO
SANTALUCIA MOBILI

ANTIMONIO



MARNA
SANTALUCIA MOBILI

MARNA



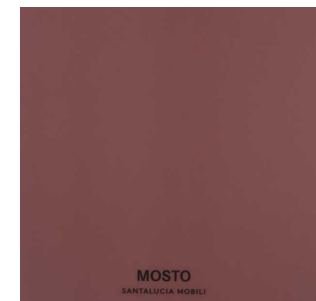
NERO
SANTALUCIA MOBILI

NERO



CIPRIA
SANTALUCIA MOBILI

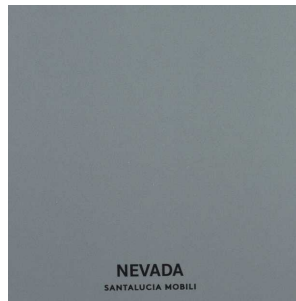
CIPRIA



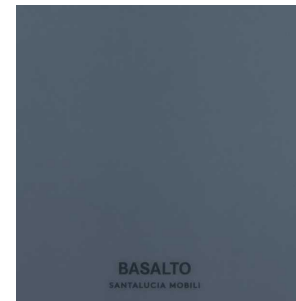
MOSTO
SANTALUCIA MOBILI

MOSTO

Kat. Matt / Glossy Lacquered
Matný / Lesklý lak



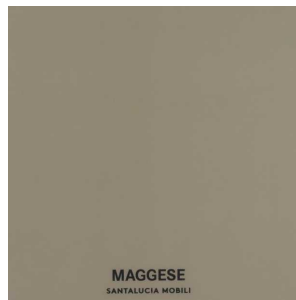
NEVADA



BASALTO



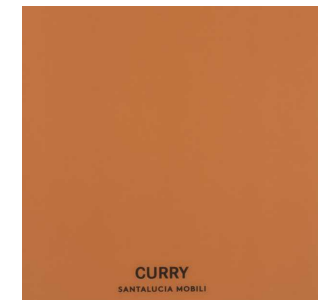
PETROLIO



MAGGESE



VERDE OMBRA



CURRY



CUOIO

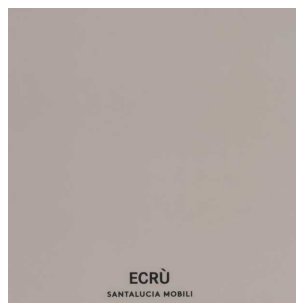


SENAPE

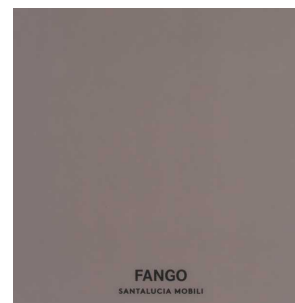


PAPERICA

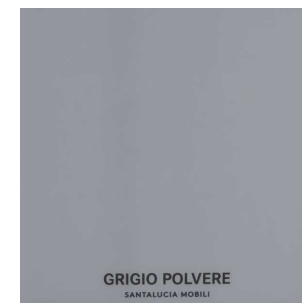
Kat. Matt / Glossy Lacquered
Matný / Lesklý lak



ECRÙ



FANGO



GRIGIO POLVERE

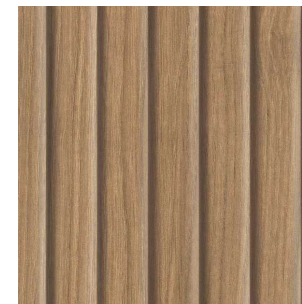
Kat. Sculpt wood grain
Povrch s reliéfem



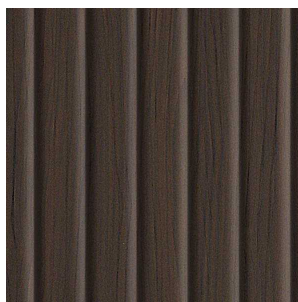
SCULPT WHITE



SCULPT GREY



SCULPT COFFEE



SCULPT DARK

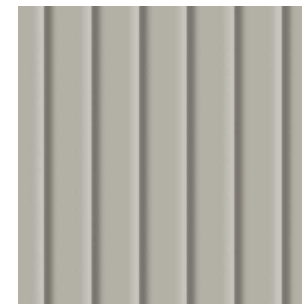
Kat. Scult matt lacquer
Povrch s reliéfem - matný lak



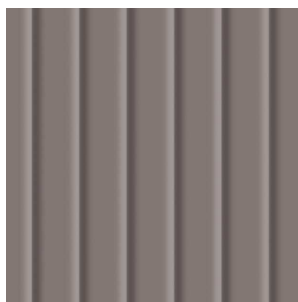
SCULPT BIANCO



SCULPT GHIAIA



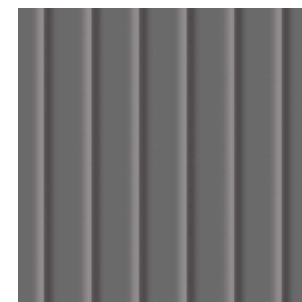
SCULPT LIMO



SCULPT PEPE



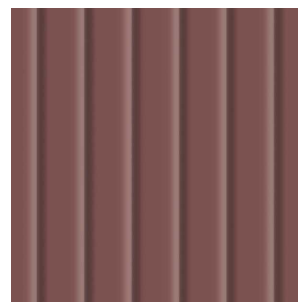
SCULPT ANTIMONIO



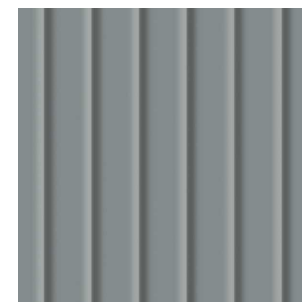
SCULPT MARNA



SCULPT CIPRIA

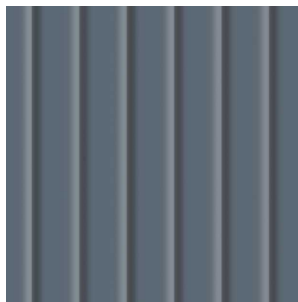


SCULPT MOSTO



SCULPT NEVADA

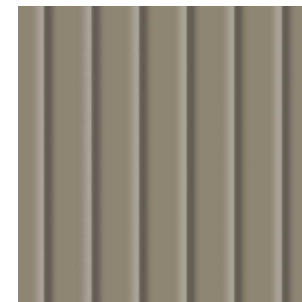
Kat. Scult matt lacquer
Povrch s reliéfem - matný lak



SCULPT BASSLTO



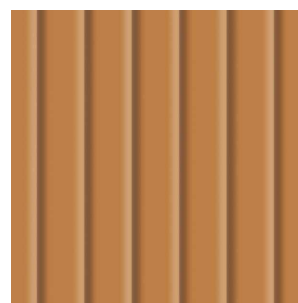
SCULPT PETROLIO



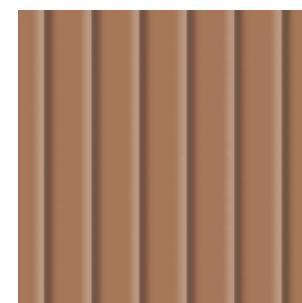
SCULPT MAGGESE



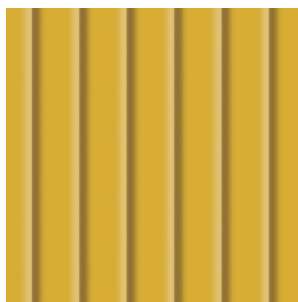
SCULPT VERDE OMBRA



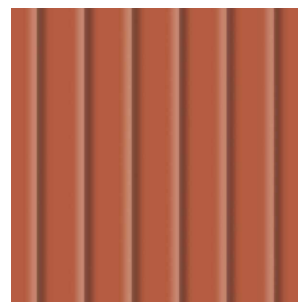
SCULPT CURRY



SCULPT CUCIO



SCULPT SENAPE



SCULPT PAPRICA



SCULPT ECRÚ

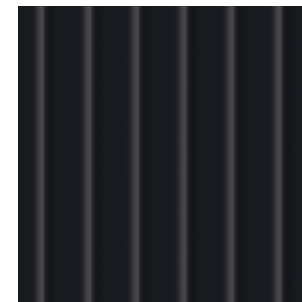
Kat. Scult matt lacquer
Povrch s reliéfem - matný lak



SCULPT GRIGIO POLVERE

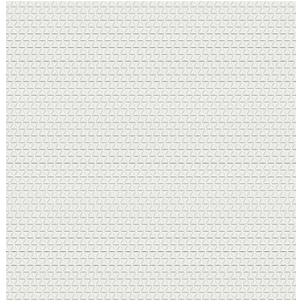


SCULPT FANGO

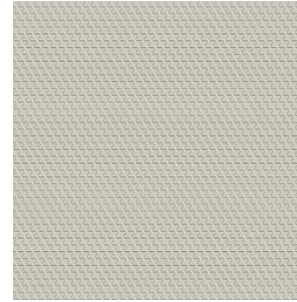


SCULPT NERO

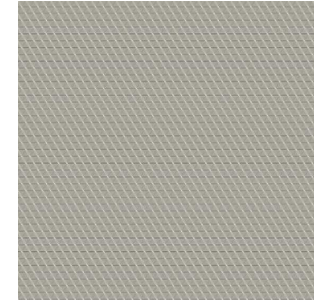
Kat. Matt Lacquered Trial
Lak matný Trial



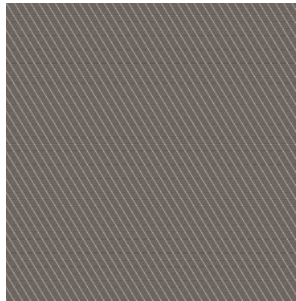
TRIAL BIANCO



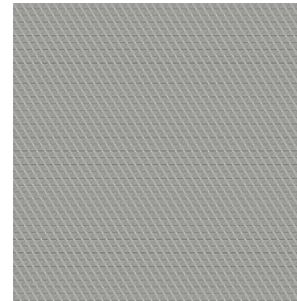
TRIAL GHIAIA



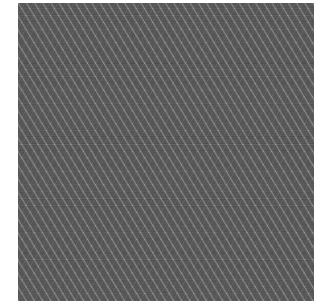
TRIAL LIMO



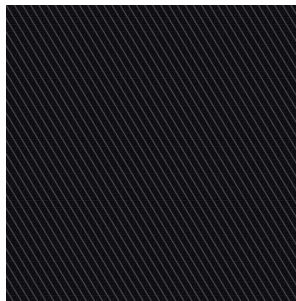
TRIAL PEPE



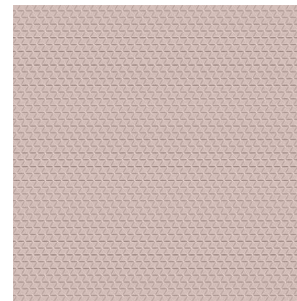
TRIAL ANTIMONIO



TRIAL MARNIA



TRIAL NERO



TRIAL CIPRIA

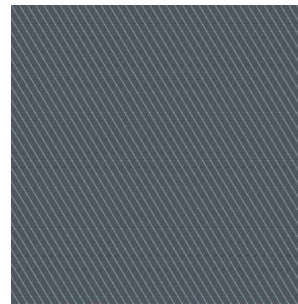


TRIAL MOSTO

Kat. Matt Lacquered Trial
Lak matný Trial



TRIAL NEVADA



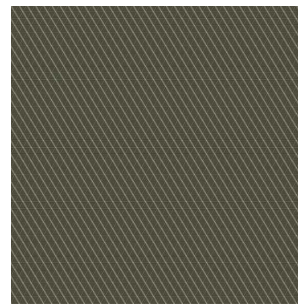
TRIAL BASALTO



TRIAL PETROLIO



TRIAL MAGGESE



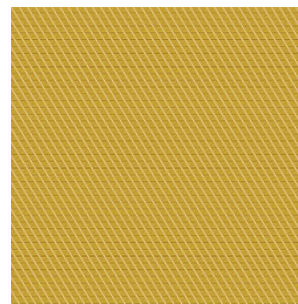
TRIAL OMBRA



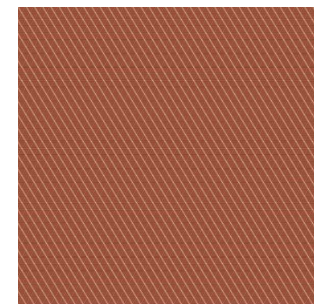
TRIAL CURRY



TRIAL CUOIO

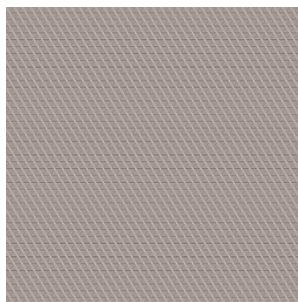


TRIAL SENAPE

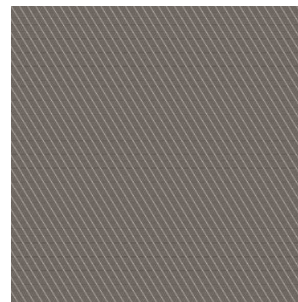


TRIAL PAPRICA

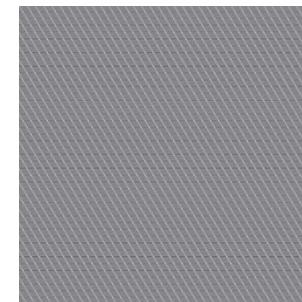
Kat. Matt Lacquered Trial
Lak matný Trial



TRIAL ECRÚ

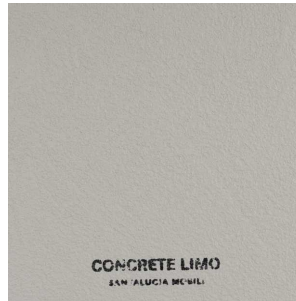


TRIAL BASALTO



TRIAL PETROLIO

Kat. Concrete - Beton



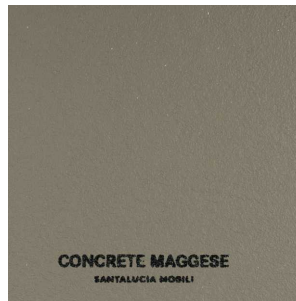
CONCRETE LIMO



CONCRETE PEPE



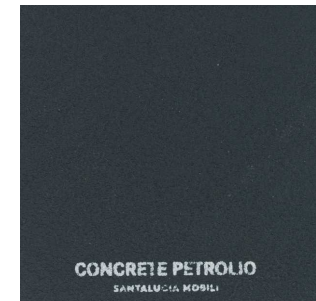
CONCRETE MARNA



CONCRETE MAGGESE



CONCRETE CUOIO

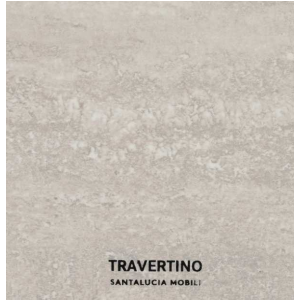


CONCRETE PETROLIO

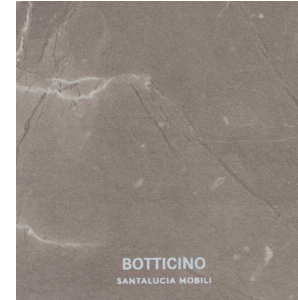


CONCRETE ECRÙ

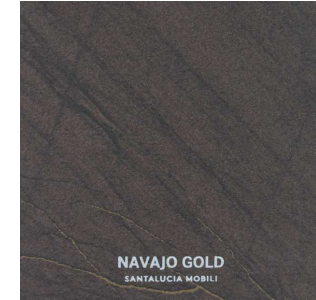
Kat. Lamino



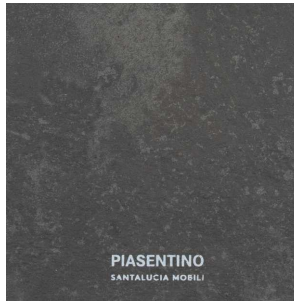
TRAVERTINO



BOTTICINO



NAVAJO GOLD



PIASENTINO

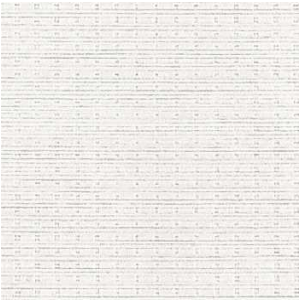
Kat. Trama / Tissu



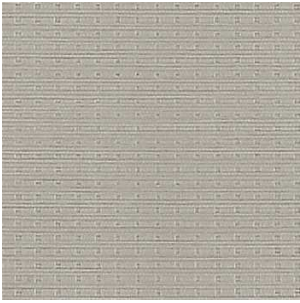
TRAMA RUBIC



TRAMA TELA BIANCO



TISSU BIANCO



TISSU LIMO

Kat. Inner finish
Vnitřní povrch



BIANCOSPINO



FABRIK

Kat. Specchi
Zrcadlo



SPECCHIO ARGENTO

Kat. Special Glasses
Speciální sklo



VETRO TRASPARENTE



VETRO STOPSOL

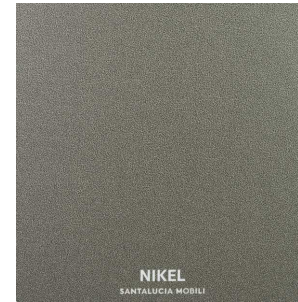


VETRO PELTRO

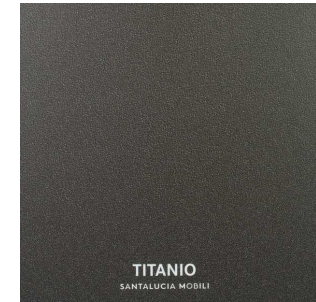
Kat. Metallic Varnishes
Dekor kovů



BRONZO



NIKEL



TITANIO



BLACK

ITALIER

www.italier.cz info@italier.cz +420 774 431 196