

Technický list – SantaLucia Pratico

MATERIÁL

Dřevěné panely (MDF deska), které jsou potažené laminem.

Jednotlivé tloušťky desek jsou uvedeny v popisu níže.

PODNOŽ

Pokud moduly nejsou zavěšeny.

Podnož výška 23 mm.

Vyrobené z černého plastu, výškově nastavitelné.

TOP – HORNÍ DESKA

Top 12 mm

SOKL

Sokl 18 mm

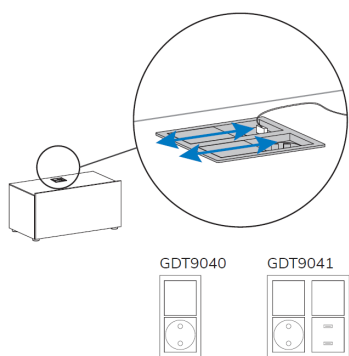
ZÁVĚSNÉ POLICE

Tloušťka 35 mm

PŘISLUŠENSTVÍ

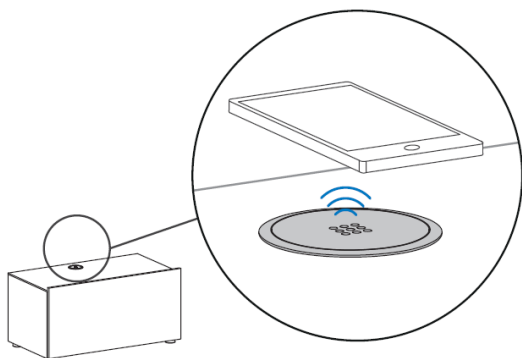
Elektrické zásuvky s USB výstupem

Modul se skrytými zásuvkami, které se otevírají posunutím krytu. Rám krytu je kovový. Modul nabízíme ve 2 variantách.



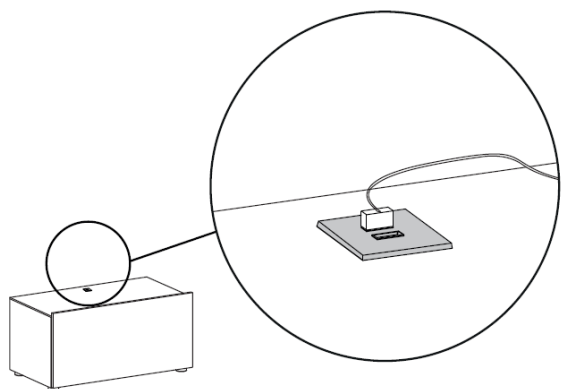
Bezdrátová nabíječka

Modul se skrytou bezdrátovou nabíječkou, ideální pro nabíjení chytrých telefonů. Rám krytu je kovový.



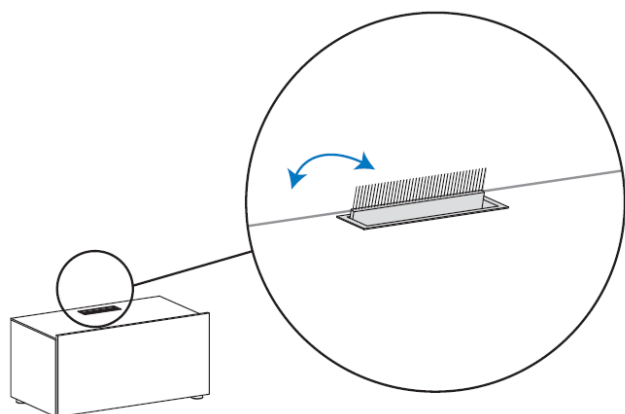
Čtvercová zásuvka s USB výstupem

Modul se skrytou USB zásuvkou, která obsahuje dva portály pro USB typu A. Zásuvka je vyrobena z černého plastu.



Otvor pro kabely

Modul s otvorem pro kabely, který je doplněn kartáčovým těsněním pro snadné umístění jakéhokoliv kabelu. Rám je kovový.



ENG

WARDROBES

Side panels 25 thk

Wood-based panels clad on the outside in impregnated printed paper and on the inside in printed paper.
Fitted with adjustable feet.

Dividers 25 thk / Middle Inserts 25 thk / Shelves 25 thk

Wood-based panels clad in printed paper.
The dividers are edged at the front in the internal finish.

Tops 25 thk / Bottoms 25 thk

Wood-based panels clad in printed paper.

Plinths H.25 for Hinged Doors

Profiles made from fibreboard clad in printed paper.

Back panels 5 thk

Panels made from fibreboard clad in printed paper.

Back panels 18 thk

Wood-based panels clad in impregnated printed paper.

Plain hinged door

Wood-based panels 18 thk clad in impregnated printed paper.
The internal finish is the same as the external finish.
Where required, the hinged doors are fitted with mirrors 4 mm thick, applied using high-adhesive glues.
Handle made from aluminium or from fibreboard clad in Wood/ECO.
Hinges fitted with soft-close mechanism with horizontal hinge plate.
Optional adhesive plastic dust guard on left-hand door.

Hinged door J

Wood-based panels 18 thk clad in impregnated printed paper.
The internal finish is the same as the external finish.
Handle moulded out of the door panel.
Hinges fitted with soft-close mechanism with horizontal hinge plate.
Optional adhesive plastic dust guard on left-hand door.

Snow / Tris / Flò Sliding Door

Wood-based panels 18 thk clad in impregnated printed paper.
Where required, the hinged doors are fitted with mirrors 4 mm thick, applied using high-adhesive glues.
For the Flò version, a thin decorative adhesive moulded insert is applied to the door front.
Large aluminium handles clad in Wood/ECO and tarnished for the Alluminio finish. Fitted with dust-guard brush and sunken vertical stretchers to adjust the longitudinal parallelism.
Adjustable sliding system for wardrobes with stacked doors, fitted with traditional pincer-type stops and as an optional extra with air soft closing.

Link Sliding Door

Wood-based panels 22 thk clad in impregnated printed paper.
Fitted with dust-guard brush and sunken vertical stretchers to adjust the longitudinal parallelism.
Adjustable sliding system for wardrobes with stacked doors, fitted with traditional pincer-type stops and as an optional extra with air soft closing.

Drawer units for wardrobes

Side panels 40 thk / Tops 25 thk / Fronts 18 thk:
wood-based panels clad in printed paper.
Sides: Wood-based panels in Tramato Grigio finish.
Bottom: fibreboard panels in Tramato Grigio finish.
Runners: sliding mechanisms with controlled pull-out fitted with soft-close mechanism.

Clothes rails

Made by cold strip extrusion with subsequent Titanio painting. The tube supports are made of pressed metal with subsequent Titanio painting.

Pull-down Rail

Nylon and fibre-glass frame containing the hydraulic mechanism. Nylon and fibre-glass handle made with nitrogen injection moulding technology.

Pull-out tray

Plastic frame in Titanio finish with plastic basket in Titanio finish.
Runners: sliding mechanisms on ball bearings.

Pull-out trouser hanger

Plastic frame in Titanio finish with plastic trouser rack in Titanio finish.
Runners: sliding mechanisms on ball bearings.

Pull-out shoe rack

Plastic frame in Titanio finish with plastic shoe rack in Titanio finish.
Runners: sliding mechanisms on ball bearings.

Pull-out Tie Rack and Belt Hanger:

Plastic frame in Titanio finish with plastic tie rack and belt hanger in Titanio finish.
Runners: sliding mechanisms on ball bearings.

Trouser Rack on the side panel

Plastic frame in Titanio finish with movable plastic trouser racks in Titanio finish.

Hook

Rotating hook for hangers for under the metal shelf in Alluminio finish.

LED light

Plastic frame with Alluminio finish, LED light, provided with a built-in motion sensor with a timer to switch off after 15 seconds. Includes 3 x LR03 (AAA) batteries and a battery warning light that flashes when it is about to run out. It has a button for controlling the number of LEDs that you want to turn on: turn on the central LED, the surrounding LEDs, or both.

LED module

Linear LED module W.550 to be applied to the surface of the BIANCO RAL 9003 MATT finish.
Plastic opaline diffuser at 30°.
Painted plastic heads with BIANCO RAL 9003 MATT finish.
LED strip 120 LED/m 4000 K
PIR Sensor (ON-OFF) switch located on RH side of the lamp being used.
12Vdc 15W DRIVER complete with:
- 2m cable + EU input plug
- 100mm cable + F output connector
- Class III insulation
- Energy class A+
- IP20
- Compliant with EC standards

UNITS

JOY unit

Body:
wood-based panels 18 thk clad in impregnated printed paper.
Back panels:
fibreboard panels.
Drawers:
wood-based panels clad in impregnated printed paper, fitted with handle grip.
Sides: wood-based panels in Tramato Grigio finish.
Bottom: fibreboard panels in Tramato Grigio finish.
Runners: sliding mechanisms with controlled pull-out fitted with soft-close mechanism.
Feet: the modules rest directly on the bottom fitted with anti-scratch felt pads H.5.

AMBRA unit

Body:
wood-based panels 18 thk clad in impregnated printed paper.
Back panels:
fibreboard panels.
Drawers:
wood-based panels clad in impregnated printed paper.
Sides: wood-based panels in Tramato Grigio finish.
Bottom: fibreboard panels in Tramato Grigio finish.
Runners: sliding mechanisms with controlled pull-out fitted with soft-close mechanism.
Feet: in black anti-scratch plastic H.23 height adjustable.

HOT unit

Body:
wood-based panels 35 thk clad in impregnated printed paper.
Back panels:
fibreboard panels.
Drawers:
wood-based panels clad in impregnated printed paper.
Sides: wood-based panels in Tramato Grigio finish.
Bottom: fibreboard panels in Tramato Grigio finish.
Runners: sliding mechanisms with controlled pull-out fitted with soft-close mechanism.
Handles: vers. "PNG293" – "PNG802" – "PNG240" – "PNG812".

SCHEMA PRODOTTO

PRODUCT FICHE

Feet: the modules rest directly on the bottom fitted with anti-scratch felt pads H.5.

DADO unit

Body:

wood-based panels 18 thk clad in impregnated printed paper.

Back panels:

fibreboard panels.

Drawers:

wood-based panels clad in impregnated printed paper.

Sides: wood-based panels in Tramato Grigio finish.

Bottom: fibreboard panels in Tramato Grigio finish.

Runners: sliding mechanisms with controlled pull-out fitted with soft-close mechanism.

Handles: no handles as standard, because fitted with handle grip.
optional "PNG293" – "PNG802" – "PNG240" – "PNG812".

Feet: in black anti-scratch plastic H.23 height adjustable.

KROS unit

Body:

wood-based panels 18 thk clad in impregnated printed paper.

Back panels:

fibreboard panels.

Drawers:

wood-based panels clad in impregnated printed paper.

Sides: wood-based panels in Tramato Grigio finish.

Bottom: fibreboard panels in Tramato Grigio finish.

Runners: sliding mechanisms with controlled pull-out fitted with soft-close mechanism.

Handles: vers. "PNG293" – "PNG802" – "PNG240" – "PNG812".

Feet: the modules rest directly on the bottom fitted with anti-scratch felt pads H.5.

ARCO unit

Side panels/Bottom:

wood-based panels 18 thk clad in impregnated printed paper.

Top:

moulded wood-based panels 18 thk clad in impregnated printed paper.

Back panels:

fibreboard panels.

Drawers:

panels made from moulded plywood, clad in impregnated printed paper, fitted with side handle grip.

Sides: wood-based panels in Tramato Grigio finish.

Bottom: fibreboard panels in Tramato Grigio finish.

Runners: sliding mechanisms with controlled pull-out fitted with soft-close mechanism.

Feet: in black anti-scratch plastic H.23 height adjustable.

BEDS

FOHN headboard

Panel:

made from curved and suitably moulded plywood 19 thk, clad in impregnated printed paper.

Padded cushions:

made of foam rubber and covered in eco-leather 68% PU - 20% PES - 12% COT.

MISTRAL headboard

Panel:

wood-based 25 mm thk clad in impregnated printed paper.

Slats:

wood-based 25 mm thk clad in impregnated printed paper.

Hardware: painted metal brackets.

PACO headboard

Panel:

made from curved and suitably moulded plywood 18 thk, clad in impregnated printed paper.

TEOREMA headboard

Panel:

wood-based 25 mm thk clad in impregnated printed paper.

Slats:

made of fibreboard 28 mm thk clad in impregnated printed paper.

Hardware: painted metal brackets.

VELA headboard

Panel:

wood-based panel 25 mm thk clad in impregnated printed paper.

Where required the top panel can be fitted with LEDs and switch

in compliance with EEC directives 93/68 - 89/336.

Hardware: metal brackets powder-coated in Alluminio finish.

Upholstered panel:

core made of wood-based panels shaped with foam rubber and covered in eco-leather 68% PU - 20% PES - 12% COT.

Curved frame

Panels:

made of moulded fibreboard 40 mm thk clad in impregnated printed paper.

Feet: turned wood ø75 mm clad in impregnated printed paper.

Hardware: bed base support brackets (squares) in painted sheet metal.

Box frame

Panels:

wood-based 35 mm thk clad in impregnated printed paper.

Bottoms:

wood-based 18 mm thk clad in impregnated printed paper and fitted with plastic feet.

Hardware: complete with bed base support brackets (squares) in sheet metal painted black, slatted bed base and base lifting mechanism.

CUPIDO \ EROS \ BORA Upholstered Bed

Panel:

core made of wood-based panels shaped with foam rubber and covered in eco-leather 68% PU - 20% PES - 12% COT.

Hardware:

metal brackets powder-coated in Alluminio finish.

feet in chromed plastic.

MIRRORS

NAUSICIA / DELFI / MEDEA mirrors

Support:

Wood-based panels clad in impregnated printed paper for Wood finishes.

Mirrors:

4 mm thk with safety back film, combined with support panels.

Hardware: fitted with brackets.

NINFEA / TALIA / GIUNONE mirrors

Support:

Wood-based panels clad in impregnated printed paper for Wood finishes.

Frames:

Fibreboard clad in impregnated printed paper for Wood finishes.

Mirrors:

4 mm thk with safety back film, fitted in the frames.

Hardware: fitted with brackets.

ERACLE mirrors

Support:

Wood-based panels clad in impregnated printed paper.

Insert:

Wood-based panels clad in impregnated printed paper for Wood finishes.

Mirrors:

4 mm thk with safety back film, combined with support panels.

Hardware: fitted with height-adjustable brackets.

HOTELLO RANGE

Bedside tables

Body:

wood-based panels 35 thk clad in impregnated printed paper.

Back panels:

fibreboard panels.

Drawers:

wood-based panels 18 thk clad in impregnated printed paper.

Sides: wood-based panels in Tramato Grigio finish.

Bottom: fibreboard panels in Tramato Grigio finish.

Runners: sliding mechanisms with controlled pull-out fitted with soft-close mechanism.

Handles: vers. "PNG293" – "PNG240".

Feet: the modules rest directly on the bottom fitted with anti-scratch felt pads H.5, optional feet in black anti-scratch plastic H.23 height adjustable.

Luggage Rack

Body:

wood-based panels 35\18 thk clad in impregnated printed paper.

fitted with adhesive aluminium bumper guides on the top surface.

Feet: the modules rest directly on the bottom fitted with anti-scratch felt pads H.5.

Clothes hanger panel

wood-based panels 18 thk clad in impregnated printed paper, fitted with adjustable brackets.

Clothes hanger

metal in satin-finish Zamak with screws and dowels for masonry.

Wooden headboards:

wood-based panels 18 thk clad in impregnated printed paper, plus solid edges 35 thk., wood-based and clad in impregnated printed paper. Fitted with bayonet fixing system.

Upholstered headboards:

cores made of wood-based panels shaped with foam rubber 30 thk and covered in eco-leather 68% PU - 20% PES - 12% COT with horizontal stitching, plus solid edges 35 thk, wood-based and clad in impregnated printed paper. Fitted with bayonet fixing system.

Eco-leather panel for wooden headboard:

cores made of wood-based panels shaped with foam rubber 22 thk and covered in eco-leather 68% PU - 20% PES - 12% COT with Velcro.

Headboard back LEDs:

Flexible, adhesive LED strip 4000°K - 10W/m with remote switch-on. In compliance with EC directives.
30W - 12VDC power supply unit

Self-supporting bed base

Tubular cross-section:

80x30 with wooden slats flush with top of bed base.

Other: fitted with 2 legs + 2 castors for easy movement.

Self-supporting bed base with webbing

Tubular cross-section:

40x30 combined with wood-based webbing 18 thk clad in impregnated printed paper with wooden slats flush with top of bed base.

Other: fitted with 2 legs + 2 castors for easy movement.

Upholstered divan bed with castors

Fir wood load-bearing frame, with rigid surface of wooden boards, edge in solid fir to prevent sagging.

Other: fitted with 2 legs + 2 castors for easy movement.

Writing desks

Frame:

Wood-based panels 35 mm and 18 mm thk

Clad in impregnated printed paper.

With door / fridge door:

Wood-based panels 35 mm and 18 mm thk

Clad in impregnated printed paper.

Hinges: metal, adjustable in all three directions.

Door opening: Push-pull, adjustable depth, sunken into the unit body.

Fridge door opening: version with handle only, fitted with soft-close mechanism and horizontal hinge plates.

Handles vers. "PNG240" – "PNG293" – "PNG833". Fitted with anti-scratch plastic felt pad H.5.

With Drawer unit:

Wood-based panels 35 mm and 18 mm thk

Clad in impregnated printed paper.

Drawer runners: Sliding mechanisms with push-pull partial pull-out. Optional total pull-out. Fitted with anti-scratch plastic felt pad H.5.

ITALIER