

Technický list – SantaLucia Dandy

MATERIÁL

Dřevěné panely (MDF deska), které jsou potažené laminem.

Jednotlivé tloušťky desek jsou uvedeny v popisu níže.

PODNOŽ

Pokud moduly nejsou zavěšeny.

Podnož výška 23 mm.

Vyrobené z černého plastu, výškově nastavitelné.

TOP – HORNÍ DESKA

Top 12 mm

SOKL

Sokl 15 mm

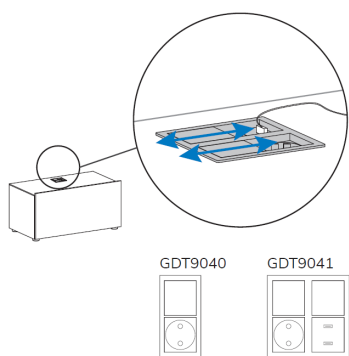
ZÁVĚSNÉ POLICE

Tloušťka 35 mm

PŘISLUŠENSTVÍ

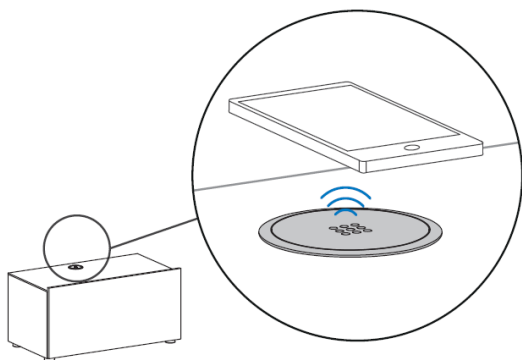
Elektrické zásuvky s USB výstupem

Modul se skrytými zásuvkami, které se otevírají posunutím krytu. Rám krytu je kovový. Modul nabízíme ve 2 variantách.



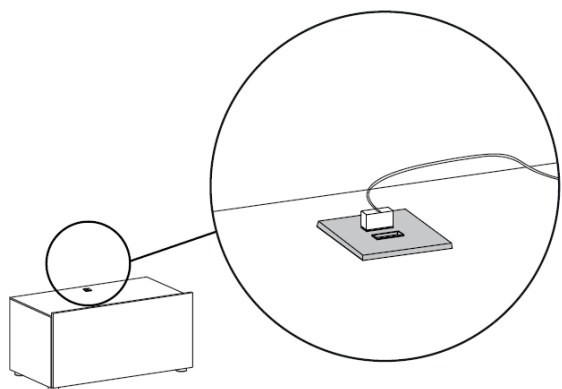
Bezdrátová nabíječka

Modul se skrytou bezdrátovou nabíječkou, ideální pro nabíjení chytrých telefonů. Rám krytu je kovový.



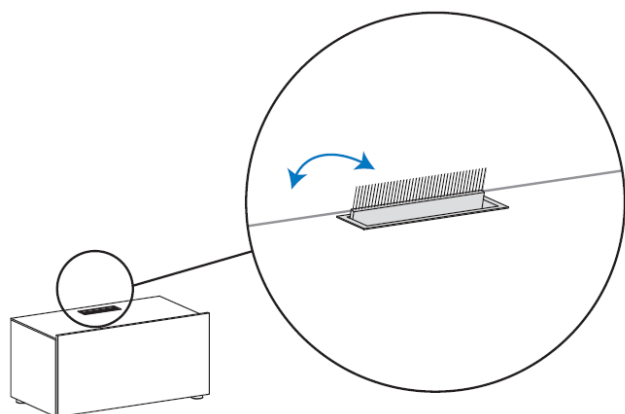
Čtvercová zásuvka s USB výstupem

Modul se skrytou USB zásuvkou, která obsahuje dva portály pro USB typu A. Zásuvka je vyrobena z černého plastu.



Otvor pro kabely

Modul s otvorem pro kabely, který je doplněn kartáčovým těsněním pro snadné umístění jakéhokoliv kabelu. Rám je kovový.



DANDY: SCHEDA TECNICA PRODOTTO

dandy: product data sheet

Standard and Inside Modules

Bodies:

18 and 35 mm thick engineered wood panels
Covered in printed impregnated paper in warm wood hues and Eco Matt colours. Matt and Glossy (brushed) lacquer finishes are coated with paintable material.

The interior is in Spiral finish, except for open and Inside compartments that mirror the external finish.

Assembly obtained by bending a single panel specially processed (folding processing).

Modules P.498, in L.825 and L.1650, with the exception of open compartments, feature wrought iron lid reinforced bars.

Wooden leaves and drawers:

Frames in rigid PVC. Covered in printed impregnated paper in warm wood hues and Eco Matt colours. Matt and Glossy (brushed) lacquer finishes are coated with paintable material and joined at 45°.

Panels 18 mm thick in wood fibre

Covered in printed impregnated paper in warm wood hues and "soft touch" Opaque Eco Colours finishes (the surface feels soft and silky to the touch). Matt and Glossy (brushed) lacquer finishes are coated with paintable material.

The Trial Matt Lacquered finishes are created by applying a specific polymer sheet with a three-dimensional paintable drawing on the front of the panel.

The Buxter Eco-leather finishes are made with a 2mm rigid cardboard panel Upholstered in Eco-leather 66% PVC - 17% PES - 17% COI

Glass leaves:

Frame with integrated internal glass stop with exclusive design section 45 x 20 in Nikel finish and equipped with handle integrated to the frame.

Stopsol and Pewter glass panels are 4 mm thick, tempered and semi-reflecting

Internal shelves:

In transparent, 8 mm thick, tempered glass (optional, where not already offered as standard)

Backs:

4 mm thick wooden fibre panel in Spiral finish.

Edges:

12 mm thick wood-derived panel in Leather finish.

Bottoms for sideboards:

4 mm thick wood fibre panel in Leather finish.

Hardware:

Wall brackets: height adjustable and equipped with anti-release mechanism.

Wall brackets cover: colour matches the shell interior.

Feet: black plastic adjustable height.

Hinges: in metal with quick release and horizontal base, adjustable in three directions.

Push & pull wooden leaves: adjustable depth and sunken in the thickness of the shell.

Drawer guides: partial pull sliding mechanisms with push & pull.

Optional full pull on Page 394.

Piston: oiled for better control in opening and closing operations.

Module bottom (optional)

12 mm thick wood fibre panel, fitted with 2 m thick adhesive pads.

Shelf rear LED light (optional):

Lighting body:
extruded transparent PVC element to which is applied a 3W LED light source that transmits the illuminating effect to the front edge of the shelf.

The extruded element should be applied to the back of the shelf by light pressure

Power supply:
60W - 12VDC

Power control unit (1 per area):

Wireless operation with the possibility of connecting up to 3 LEDs per control unit.

Remote control:

programmable radio frequency up to 4 zones with on-off and dimmer controls.

Complies with CE directives.

Internal compartment spotlight (optional):

3W LED light panel that allows homogeneous light distribution, equipped with infra-red motion/proximity sensor (PIR) and 60W - 12VDC power supply. Complies with CE directives.

Fold Modules

18 mm thick engineered wood panels

Covered in printed impregnated paper in warm wood hues and Eco Matt colours. Matt and Glossy (brushed) lacquer finishes are coated with paintable material.

Assembly obtained by bending a single panel specially processed

(folding processing).

Hardware:

Wall brackets are height adjustable.

Black plastic feet with adjustable height.

Strong-grip support tip (optional) adjustable vertically.

Module bottom (optional)

12 mm thick engineered wood panel, fitted with 2 m thick adhesive pads.

Bridge Modules

12 - 18 mm thick engineered wood panels

Covered in printed impregnated paper in warm wood hues and Eco Matt colours. Matt and Glossy (brushed) lacquer finishes are coated with paintable material.

Assembly obtained by bending a single panel specially processed (folding processing).

Supplied with appropriate assembly hardware with Standard Modules.

Wire Stirrups

Drawn steel plate section 40 x 8 mm specially welded according to the Santa Lucia furniture manufacturer design and equipped with anti-scratch slide.

Coated with liquid, metallic-effect paint.

Combo Coffe Tables

18 - 35 mm thick engineered wood panels

Covered in printed impregnated paper in warm wood hues and Eco Matt colours. Matt and Glossy (brushed) lacquer finishes are coated with paintable material.

Assembly obtained by bending a single panel specially processed (folding processing).

Double-sided 45° shaped top with folding opening, fitted with an embedded handle and system with rods that decelerate when closing.

Triade Coffe Tables

12 mm thick wooden fibre surface

Covered in printed impregnated paper in warm wood hues and Eco Matt colours. Matt and Glossy (brushed) lacquer finishes are coated with paintable material.

Legs: drawn steel surface section 40 x 8 mm specially welded according to the Santa Lucia furniture manufacturer design and equipped with anti-scratch slide.

Coated with liquid, metallic-effect paint.

Console

Comprises a Bridge Module specially sized and assembled in standard Modules P.394 through appropriate hardware

Equipped with height-adjustable brackets and anti-release mechanism.

Support drawn steel flat bracket section 40 x 8 mm specially welded according to the Santa Lucia furniture manufacturer design and equipped with anti-scratch slide.

Coated with liquid, metallic-effect paint.

Writing Table

18 mm thick engineered wood panels

Covered in printed impregnated paper in warm wood hues and Eco Matt colours. Matt and Glossy (brushed) lacquer finishes are coated with paintable material.

Assembly obtained by bending a single panel specially processed (folding processing).

Equipped with adjustable wall brackets.

Support drawn steel flat bracket section 40 x 8 mm specially welded according to the Santa Lucia furniture manufacturer design and equipped with anti-scratch slide.

Coated with liquid, metallic-effect paint.

The desk table must always be fixed to a module.

Small couch

Body:

18 mm thick engineered wood panels

Covered in printed impregnated paper in warm wood hues and Eco Matt colours. Matt and Glossy (brushed) lacquer finishes are coated with paintable material.

Assembly obtained by bending a single panel specially processed (folding processing).

Wooden leaf:

Frames in rigid PVC. Covered in printed impregnated paper in warm wood hues and Eco Matt colours. Matt and Glossy (brushed) lacquer finishes are coated with paintable material and joined at 45°.

Panels 18 mm thick in wood fibre

Covered in printed impregnated paper in warm wood hues and "soft touch" Eco Matt colours (the surface feels soft and silky to the touch). Matt and Glossy (brushed) lacquer finishes are coated with paintable material.

The Trial Matt lacquered finishes are created by applying a specific polymer sheet with a three-dimensional paintable drawing on the front of the panel.

The Buxter Eco-leather finishes are made with a 2mm rigid cardboard panel upholstered in Eco-leather 66% PVC - 17% PES - 17% COT.

Hinger in metal with quick release mechanism and horizontal base, adjustable in three directions.

Push & pull adjustable depth and embedded in the shell.

Brackets:

Drawn steel plate section 40 x 8 mm specially welded according to Santa Lucia furniture manufacturer and equipped with anti-scratch slide.

Coated with liquid, metallic-effect paint.

Cushion:

The base is made of a 10 mm thick wood fiber panel, on which rests a foam mattress.

The ensemble is upholstered and complies with the following requirements:

Emporio fabric 9% LI - 81% PL - 10% A.F.

Fantasy fabric 86% PVC - 8% PES - 5% COT - 1% PU

Etrusco eco-leather 68% PVC - 20% PES - 12% COT

Buxter eco-leather 66% PVC - 17% PES - 17% COT

Bench

50 mm thick engineered wood panels

Covered in printed impregnated paper in warm wood hues and Eco Matt colours. Matt and Glossy (brushed) lacquer finishes are coated with paintable material.

Hardware:

The side is equipped with high-capacity adjustable feet. The feet allow raising the bench by 5 mm.

The Bench must always rest against a module.

Coat stand

Drawn steel plate section 40 x 8 mm specially welded according to the Santa Lucia furniture manufacturer and equipped with anti-scratch slide.

Coated with liquid, metallic-effect paint.

Cento shelves

18 mm thick engineered wood panels

Covered in printed impregnated paper in warm wood hues and Eco Matt colours. Matt lacquer finishes are coated with paintable material.

Assembly obtained by bending a single panel specially processed (folding processing).

Hardware:

Wall fastening by means of a vertically adjustable high-grip support tip.

The Santa Lucia furniture manufacturer does not supply specific gussets for mounting on dry wall.

50 mm thick Wooden Shelves

50 mm thick engineered wood panels

Covered in printed impregnated paper in warm wood hues and Eco Matt colours. Matt lacquer finishes are coated with paintable material.

Hardware:

Concealed pins adjustable vertically at 2.5 mm and horizontally at 5 mm.

5° inclination adjustment.

The Santa Lucia furniture manufacturer does not supply specific gussets for mounting on dry wall.

35 mm thick Wooden Shelves and Side Panels

35 mm thick engineered wood panels

Covered in printed impregnated paper in warm wood hues and Eco Matt colours. Matt lacquer finishes are coated with paintable material.

Hardware:

Shelf: concealed pins adjustable vertically at 2,5 mm and horizontally at 5 mm.

5° inclination adjustment.

Side panel: slide with bayonet mount.

The Santa Lucia furniture manufacturer does not supply specific gussets for mounting on dry wall.

Boiserie Panels

18 mm thick engineered wood panels

Covered in printed impregnated paper in warm wood hues and Eco Matt colours. Matt and Glossy (brushed) lacquer finishes are coated with paintable material.

Hardware:

Adjustable anti-release spacers, to enable passage of cables, if any.

Folding Back

12 mm thick engineered wood panels

Covered in printed impregnated paper in warm wood hues and Eco Matt colours. Matt and Glossy (brushed) lacquer finishes are coated with paintable material.

Assembly obtained by bending a single panel specially processed (folding processing).

Bayonet wall mount, made of wood.

LED kit (optional)

Flexible adhesive LED strip with electronic ignition sensor, equipped with 12VDC power supply. Complies with CE directives.

Cable clamps plate (optional)

Gray plastic.

LED bar kit

Lighting body:

Linear profile section 12 x 12 mm made of extruded opal polycarbonate and completed by thermoplastic heads with integrated 4000 ° K - 10W / m LED lighting. Profile with double-sided adhesive tape for easy installation.

Power supply:

60W - 12VDC

Power control unit (1 per area):

Wireless operation with the possibility of connecting up to 3 LEDs per control unit.

Remote control:

programmable radio frequency up to 4 zones with on-off and dimmer controls.

Complies with CE directives.

Sockets and USB

Concealed wired module with independent sliding doors; access to the sockets is via an unlock button.

Frame and doors (in sight) are in painted metal alloy, while components are in self-extinguishing technopolymer.

Single schuko socket, double schuko socket and 2 usb for charging. Maximum load 3400W.

Complies with CE directives.

Induction battery charger

The wireless retractable charger with Qi technology is the perfect solution for charging a wide range of Smartphones, eliminating unsightly cords.

The start of the recharge is signalled by an acoustic sound and the status indicated by a blue LED light for the entire duration of the recharge.

The body is in painted metal alloy with an internal glass disk.

Complies with CE directives.

Cable clamp plate

Painted metal alloy equipped with a small opening with a toothbrush that facilitates the passage of any cable.

Multifunction socket

Electrical connection system and cabled data connection.

Aluminium external body and self-extinguishing technopolymer electrical sockets.

Consisting of 3 schuko sockets, 2 90° RJ45 data kits, 1 90° HDMI data kit, 2 usb sockets for charging.

Maximum load 3500W.

Complies with CE directives.

ITALIER