

MAGIC 300

Fabrics, Leather and Eco-leather for Chairs, Sofas and Beds



ITALIER

Indy 

Category: 600

Composition: 100% CO



67A



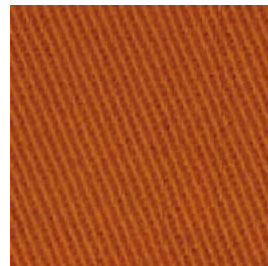
67B



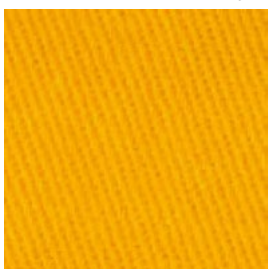
67Y



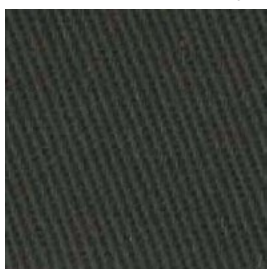
67D



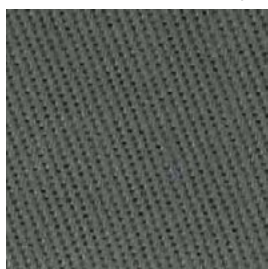
67G



67F



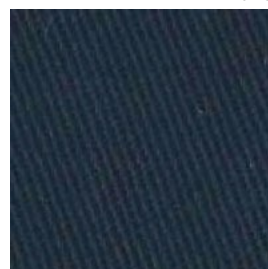
67E



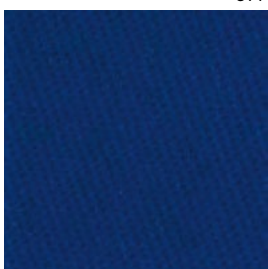
68A



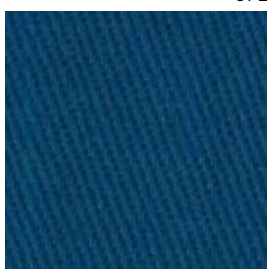
68B



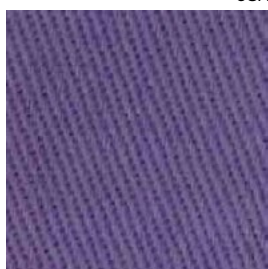
67V



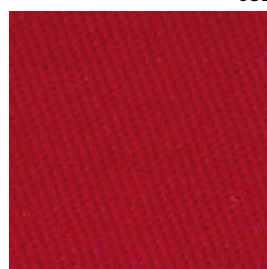
67T



67U



67N



67J

Milos 

Category: 900

Composition: 60% CO, 40% LI



98A



98D



98F



98L



98N



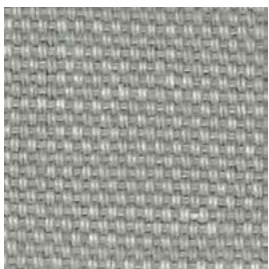
98U



98T



98Y



98B



98J

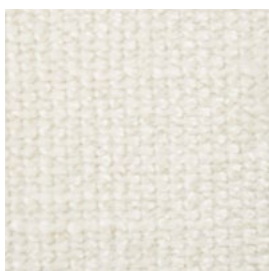
Pastello 

Category: 800

Composition: 85% PL, 15% VI



8D63



8D62



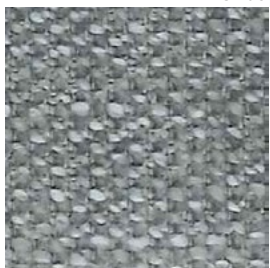
8D61



8D58



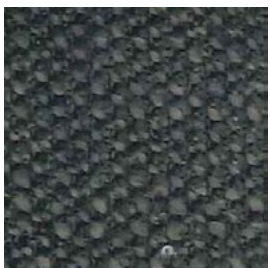
8D60



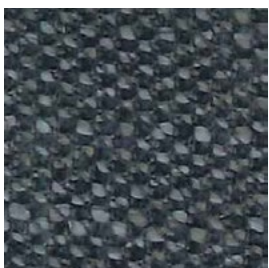
8D59



8D57



8D55



8D54



8D53

Eco-leather Secret 

Category: 800

Composition: 76% PVC, 22% PES, 2% PU



330



343



359



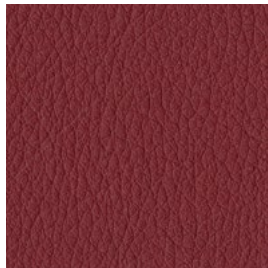
344



340



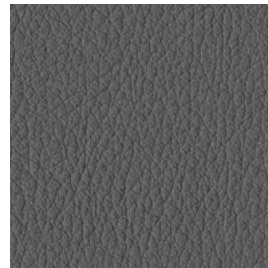
373



371



358



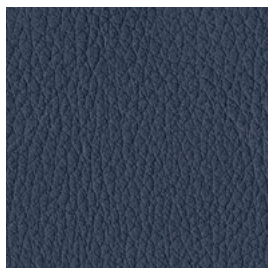
369



354



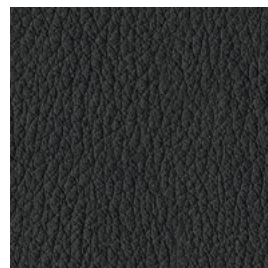
370



353



356



341

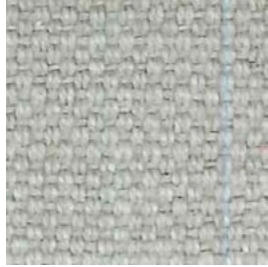
Creta 

Category: 900

Composition: 63% CO, 37% LI



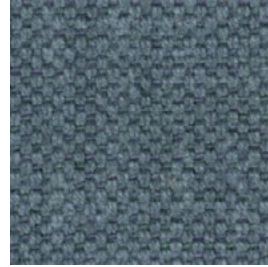
96C



96D



9A77



9A72



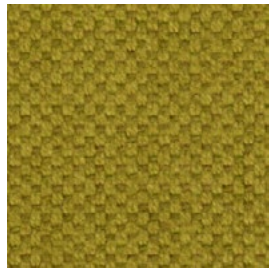
9A68



96L



96W



9A76



9A64



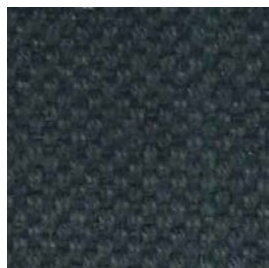
96E



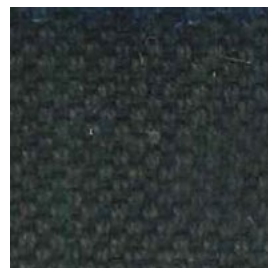
96Y



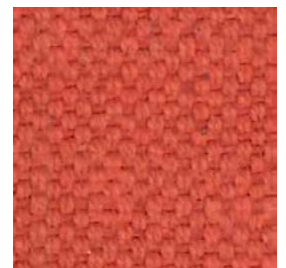
97A



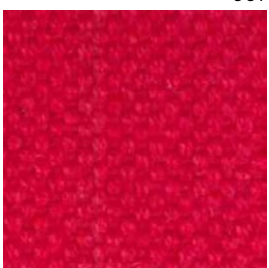
96Z



97B



96P



96R

Oxana 

Category: 900

Composition: 63% CO, 37% PL



97Q



97G



97H



97E



97L



97M



97R



97T



97K



97S



97N



97P

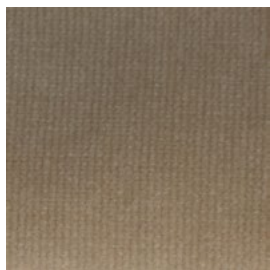
Azimut 

Category: 900

Composition: 92% PL, 5% CO, 3% other



9B43



9B02



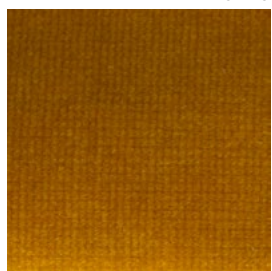
9B07



9B08



9B09



9B26



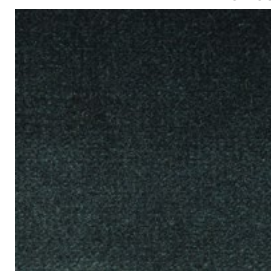
9B21



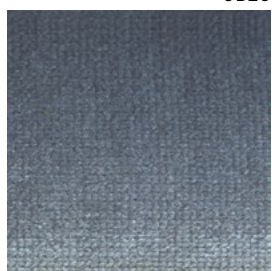
9B18



9B17



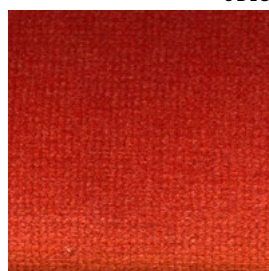
9B20



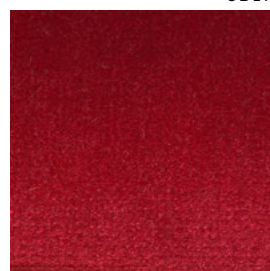
9B45



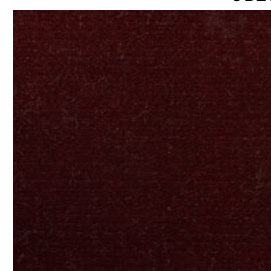
9B05



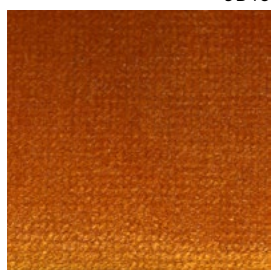
9B33



9B34



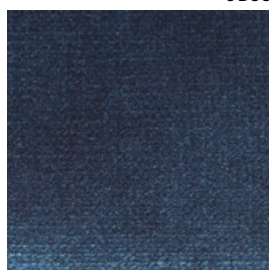
9B36



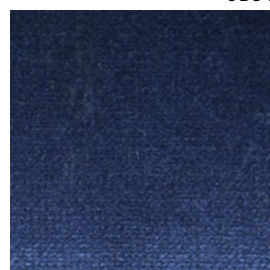
9B31



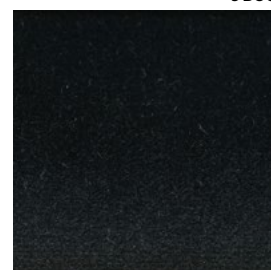
9B22



9B19



9B16

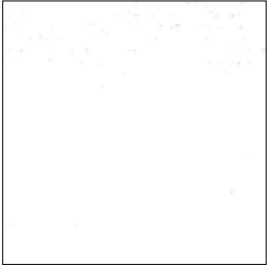


9B48

Ego  

Category: *Class*

Composition: 63% VI, 18% PL, 12% CO, 7% LI



EA73



E58



EA68



EA72



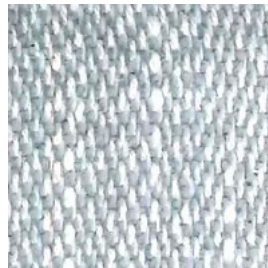
E62



E60



EA66



E59

Avenida  

Category: *Class*

Composition: 30% CO, 30% VI, 26% PL, 14% LI



EA45



EA56



EA46



EA47

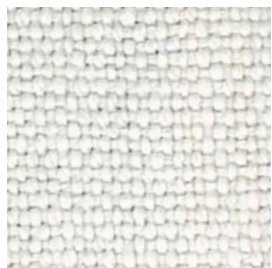


EB03

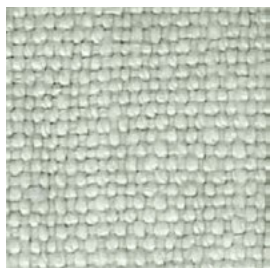


EA48

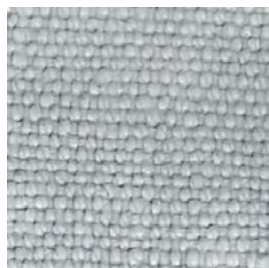
Linus 
Category: *Class*
Composition: *100% LI*



SA17



SA18



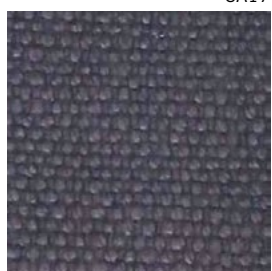
SA27



SA26



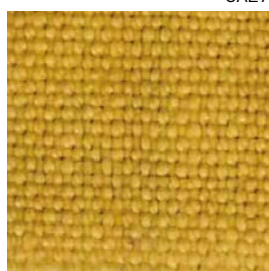
SA25



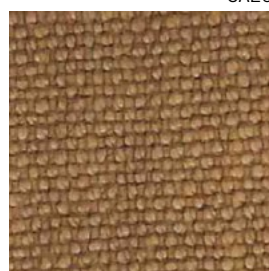
SA23



SA35



SA34



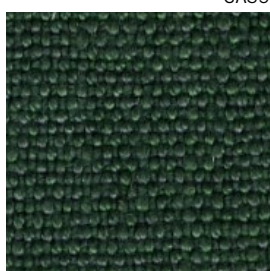
SA30



SA36



SA37



SA38



SA20



SA21

Russel-Flutter

Category: *Class*

Composition: 39% VI, 24% PC, 19% CO, 13% PL, 5% LI



SA41



SA42



SA54



SA50



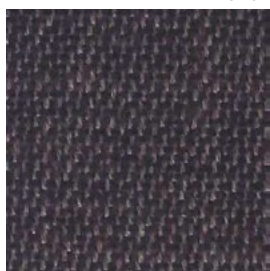
SA51



SA53



SA44



SA47



SA55



SA56

Brera-Wonderful

Category: *Must*

BRERA Composition: 64% VI, 15% PL, 11% CO, 10% LI

WONDERFUL Composition: 60% LI, 40% CO



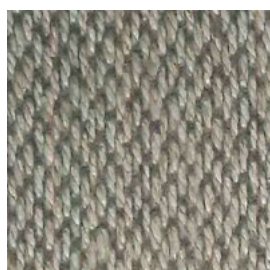
BRERA

MA43



WONDERFUL

MA37



BRERA

MA40



BRERA

MA45



WONDERFUL

MA34



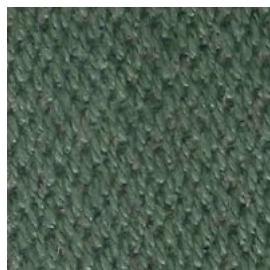
BRERA

MA42



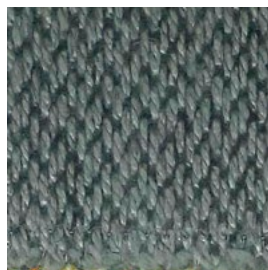
WONDERFUL

MA35



BRERA

MA44



BRERA

MA39



WONDERFUL

MA38

Damié

Category: *Must*

Composition: 47% CO, 35% VI, 18% LI



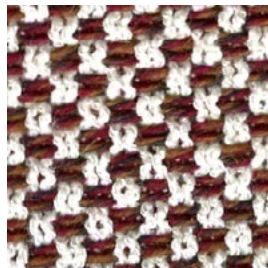
M72



M86



M84



MC35



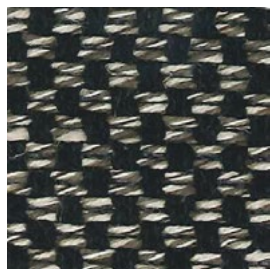
M75



M98



M74



M73

Rico

Category: *Must*

Composition: 56% CO, 30% VI, 14% LI



MA01



MA02



MA20



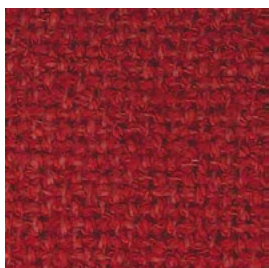
MA05



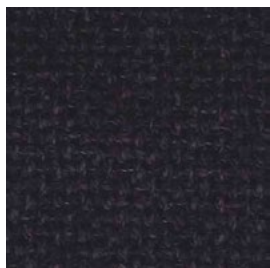
MA06



MA21



MA11



MA10



MA09



MA07

Vegas 

Category: *Must*

Composition: 55% VI, 45% CO



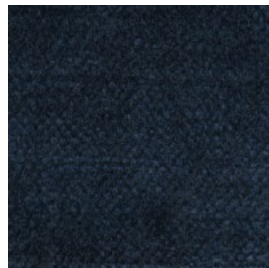
MB02



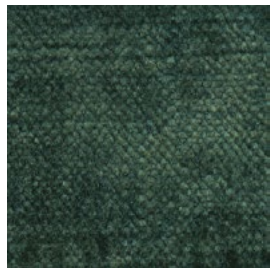
MB11



MB12



MB13



MB15



MB04



MB10



MB07



MB08



MB17

St. Moritz 

Category: *Must*

Composition: 80% WO, 20% PA



MC61



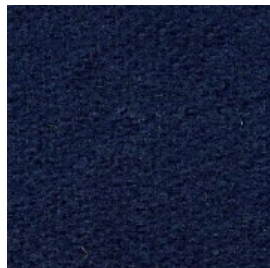
MC79



MC78



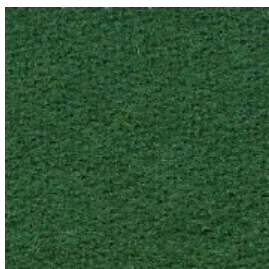
MC80



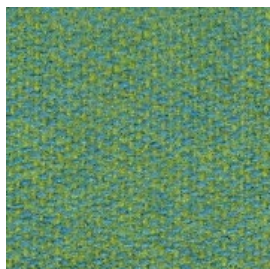
MC84



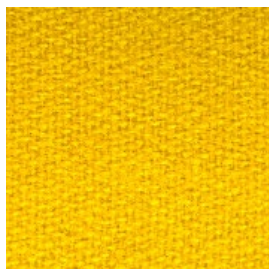
MC74



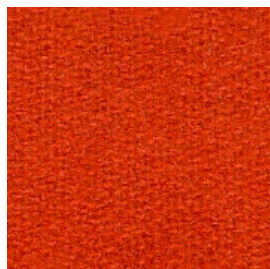
MC75



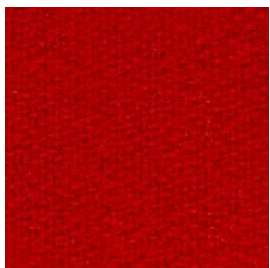
MC86



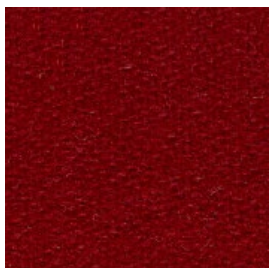
MC66



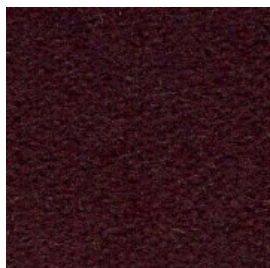
MC67



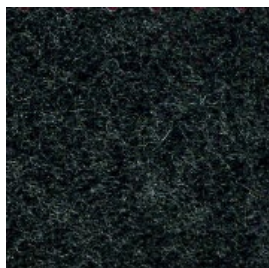
MC68



MC69



MC72



MC83



MC82



MC87

Boemian 

Category: *Must*

Composition: 25% VI, 25% PL, 15% PC, 15% WO, 13% LI, 5% CO, 2% PA



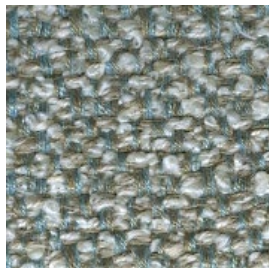
MC40



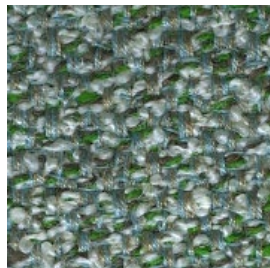
MC41



MC46



MC42



MC43

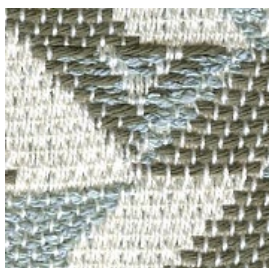


MC48

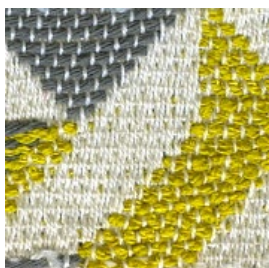
Rakam 

Category: *Must*

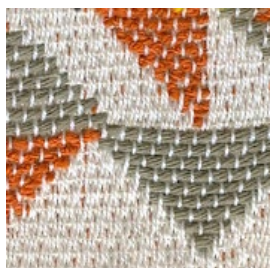
Composition: 72% CO, 15% VI, 8% LI, 5% PA



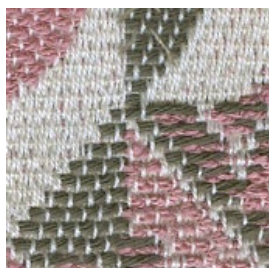
MC50



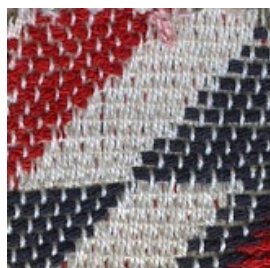
MC52



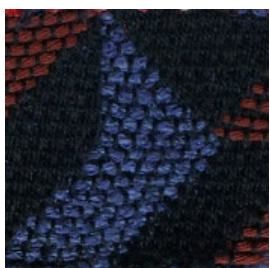
MC53



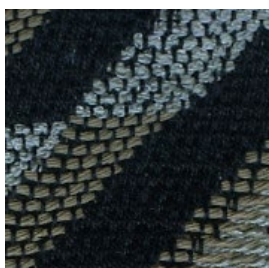
MC51



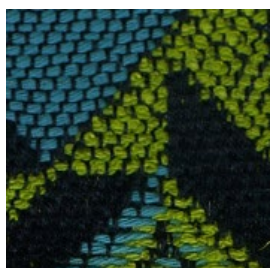
MC54



MC57



MC58



MC55

Albia - Mamba

Category: *Class* - ALBIA Composition: 63% CO, 20% VI, 10% LI, 7% PA 

Category: *Must* - MAMBA Composition: 60% CO, 25% VI, 15% LI 

BULIO Composition: 72% CO, 15% VI, 8% LI, 5% PA 



MAMBA M92



ALBIA EA59



BULIO M87



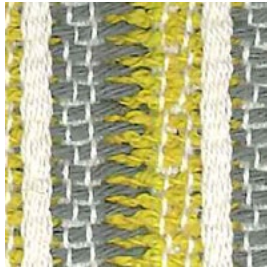
MAMBA M91



ALBIA EA58



MAMBA M96



BULIO M89



ALBIA EA64



MAMBA M95



ALBIA EA63



ALBIA EA62



BULIO M88



MAMBA M94



ALBIA EA61



MAMBA M97




ALBIA EA65

Colpes - Fred

Category: Must

ROMANOV Composition: 62% CO, 20% VI, 11% LI, 7% PA  

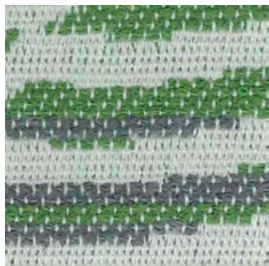
FRED Composition: 35% CO, 28% VI, 22% PL, 15% LI   

FLUTTER Composition: 58% CO, 27% VI, 15% LI  



ROMANOV

MA82



ROMANOV

MA77



FRED

MA63



FRED

MA67



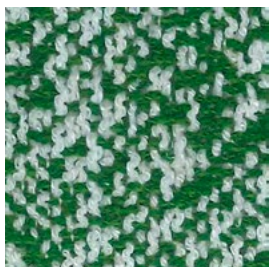
FLUTTER

MA52



FLUTTER

MA56



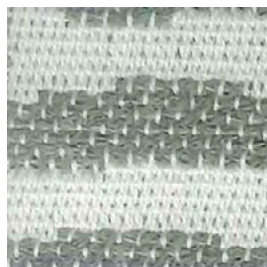
FLUTTER

MA54



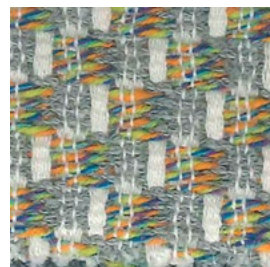
ROMANOV

MA80



ROMANOV

MA76



FRED

MA62



FRED

MA64



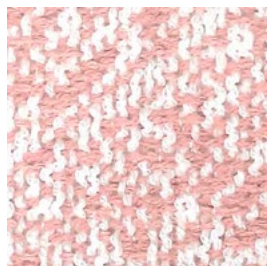
FLUTTER

MA57



FLUTTER

MA53



FLUTTER




MA58

Oesis - Naos

Category: Must

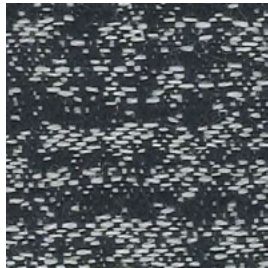
OXFORD Composition: 50% WO, 40% CO, 10% PA   

DELAIN Composition: 55% WO, 37% CO, 8% PA  

OESIS Composition: 35% VI, 24% PL, 23% CO, 18% LI   



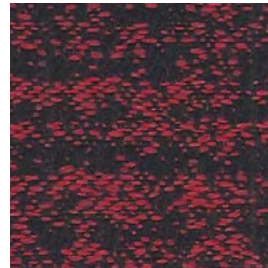
OXFORD MB40



OXFORD MB38



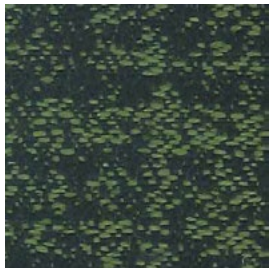
OXFORD MB36



OXFORD MB37



OXFORD MB39



OXFORD MB35



DELAIN MB24



DELAIN MB57



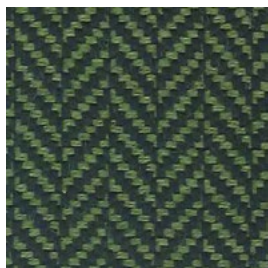
DELAIN MB22



DELAIN MB23



DELAIN MB25



DELAIN MB21



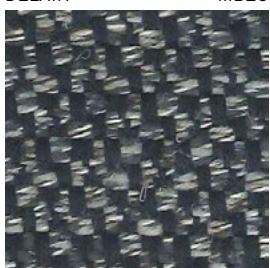
OESIS MB51



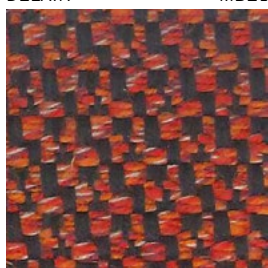
OESIS MB55



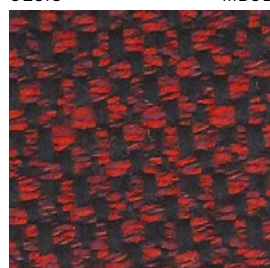
OESIS MB54



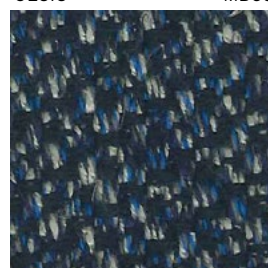
OESIS MB52



OESIS MB47



OESIS MB48



OESIS MB53



OESIS MB49

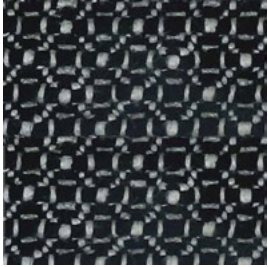
Pixel  

Category: *Class*

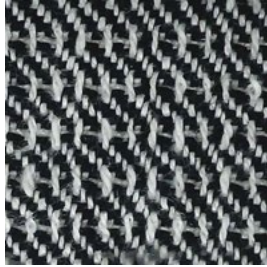
PIXEL ROMBO, PIXEL DIAGONALE Composition: 48% LI, 47% CO, 5% AF

PIXEL GALLES Composition: 95% CO, 5% AF

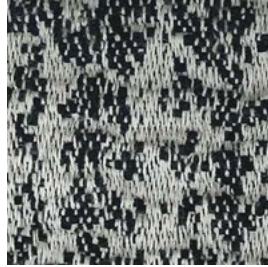
PIXEL RETE, PIXEL UNITO Composition: 48% LI, 47% CO, 5% AF



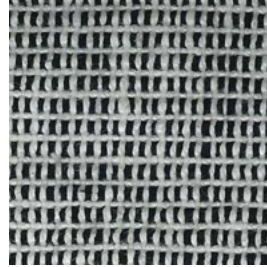
PIXEL ROMBO SA64



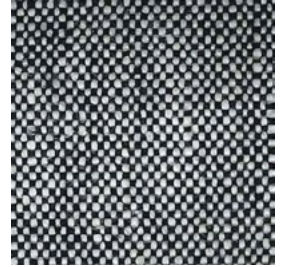
PIXEL DIAGONALE SA80



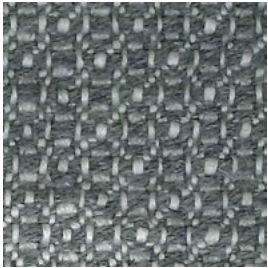
PIXEL GALLES SA60



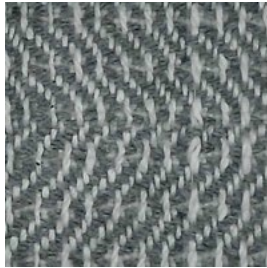
PIXEL RETE SA68



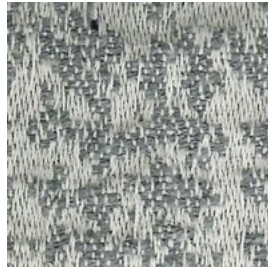
PIXEL UNITO SA72



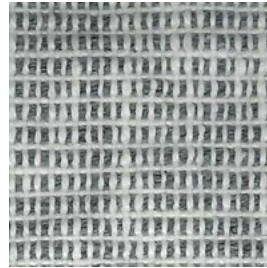
PIXEL ROMBO SA65



PIXEL DIAGONALE SA81



PIXEL GALLES SA61



PIXEL RETE SA69



PIXEL UNITO SA73



PIXEL ROMBO SA62



PIXEL DIAGONALE SA78



PIXEL GALLES SA58



PIXEL RETE SA66



PIXEL UNITO SA70



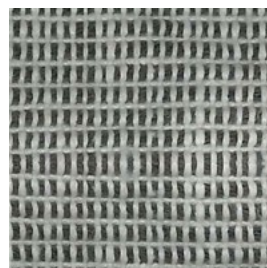
PIXEL ROMBO SA63



PIXEL DIAGONALE SA79



PIXEL GALLES SA59




PIXEL RETE SA67







PIXEL UNITO SA71



Curmi 1

Category: Must

DIPLO Composition: 35% CO, 47% VI, 23% PL, 15% LI  

CURMI Composition: 45% CO, 25% PL, 20% VI, 10% LI   

COMO Composition: 52% CO, 25% PL, 15% VI, 8% LI  

TIGLIO Composition: 50% VI, 32% CO, 8% PC, 7% LI, 3% WO  



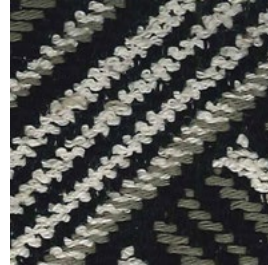
DIPLO MB88



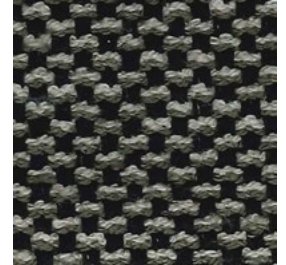
CURMI MB70



CURMI MB91



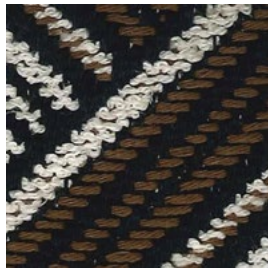
COMO MB60



CURMI MB68



CURMI MB66



COMO MB59



DIPLO MB81



CURMI MB89



DIPLO MB82



TIGLIO MB75







TIGLIO MB74

Curmi 2

Category: Must

DIPLO Composition: 35% CO, 47% VI, 23% PL, 15% LI  

CURMI Composition: 45% CO, 25% PL, 20% VI, 10% LI   

COMO Composition: 52% CO, 25% PL, 15% VI, 8% LI  

TIGLIO Composition: 50% VI, 32% CO, 8% PC, 7% LI, 3% WO  



TIGLIO

MB76



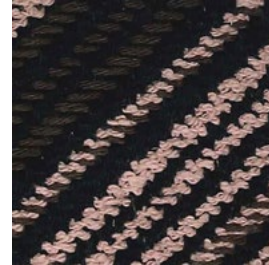
CURMI

MB90



DIPLO

MB83



COMO

MB61



TIGLIO

MB80



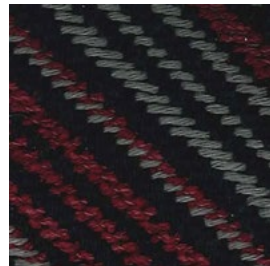
CURMI

MB72



DIPLO

MB87



COMO

MB65



TIGLIO

MB78



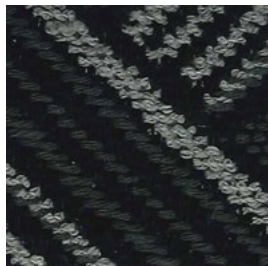
CURMI

MB71



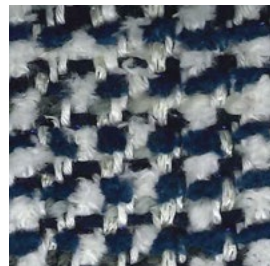
DIPLO

MB86



COMO

MB64



TIGLIO

MB77



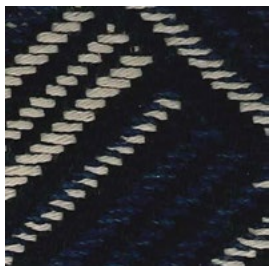
CURMI

MB92



DIPLO

MB85



COMO

MB63

Capri 
Leather - Capri
Category: Capri



L01



L26



L03



L34



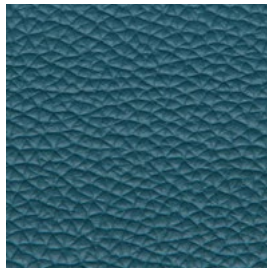
L41



L27



L40



L28



L07



L44



L30



L37



L35



L48



L06



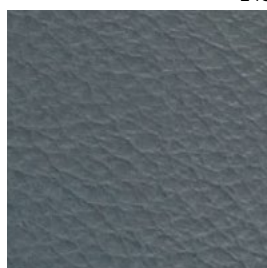
L08



L04




L50



L51



L09

Ponza 
Leather - Nabuk
Category: *Ponza*



NABUK

N04



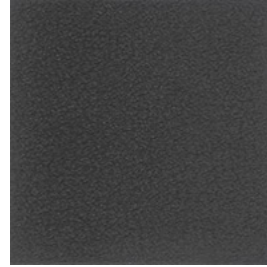
NABUK

N01




NABUK

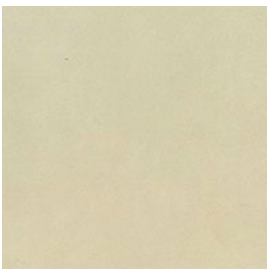
N03



NABUK

N02

Ponza 
Leather - Anilina
Category: *Ponza*



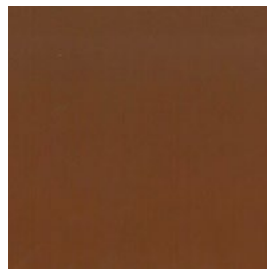
ANILINA

A01



ANILINA

A02



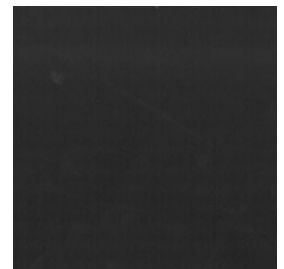
ANILINA

A05



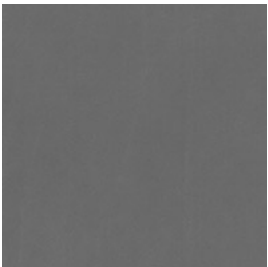
ANILINA

A04



ANILINA

A06



ANILINA

A03

ITALIER

www.italier.cz | info@italier.cz | +420 774 431 196