

*New COVERS* 2019

---

**ITALIER**

*Cruise*

Category: *Must*

Composition: 40% PC, 29% VI, 15% PA, 9% PL, 7% WO



MD13



MD14



MD15



MD16



MD17



MD18



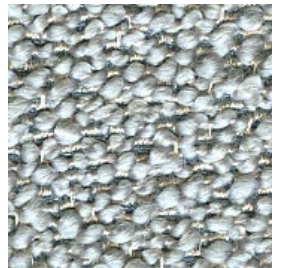
MD19



MD20



MD21



MD22



MD23



MD24

---

*Latina*

Category: *Must*

Composition: 58% PC, 21% CO, 17% WO, 4% PL



MC88



MC89



MC90



MC91



MC92



MC93



MC94



MC95

---

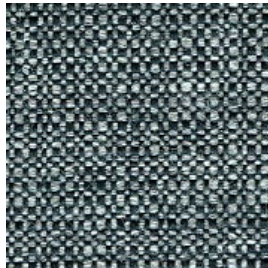
*Ombra*

Category: *Must*

Composition: 53% CO, 37% WO, 10% PA



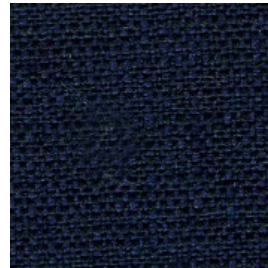
MD01



MD02



MD03



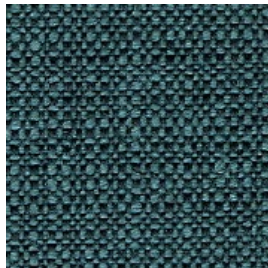
MD04



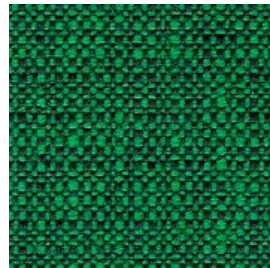
MD05



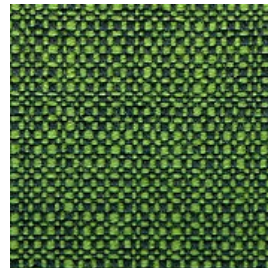
MD06



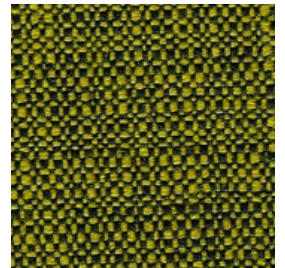
MD07



MD08



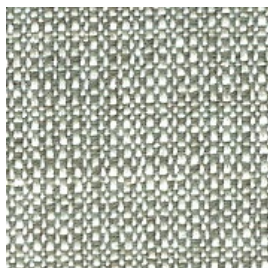
MD09



MD10



MD11



MD12

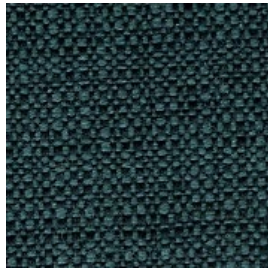
# Devodi

Category: Must - OMBRA Composition: 53% CO, 37% WO, 10% PA

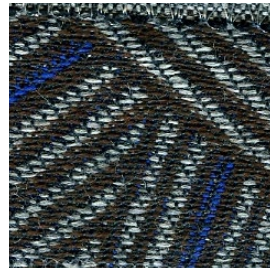
Category: Special - DEVODI Composition: 60% WO, 30% CO, 10% PA



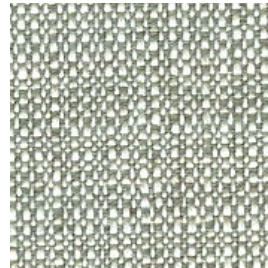
OMBRA MD11



OMBRA MD07



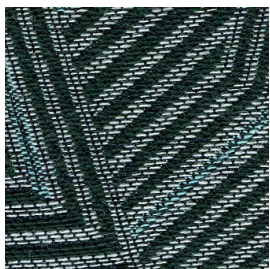
DEVODI SP29



OMBRA MD12



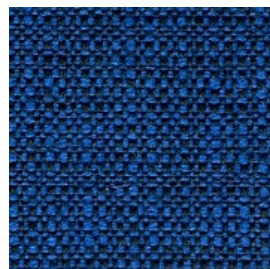
OMBRA MD02



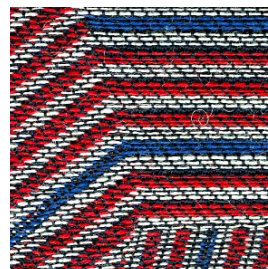
DEVODI SP25



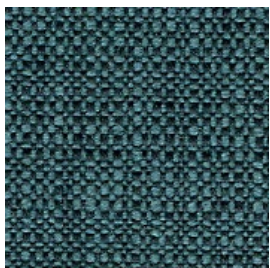
OMBRA MD05



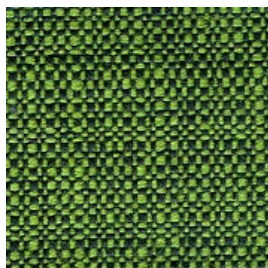
OMBRA MD03



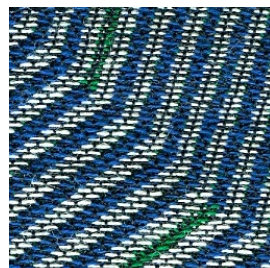
DEVODI SP24



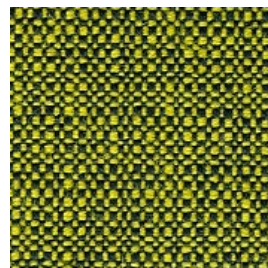
OMBRA MD07



OMBRA MD09



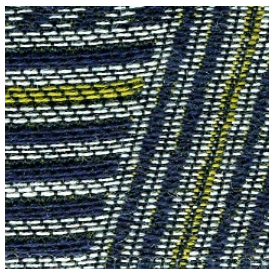
DEVODI SP26



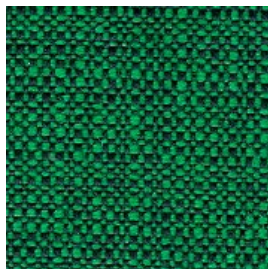
OMBRA MD10



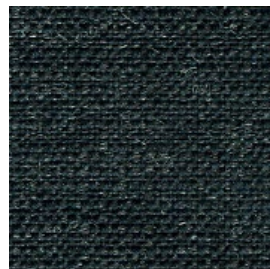
OMBRA MD04



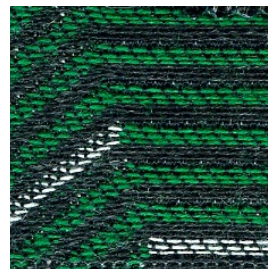
DEVODI SP28



OMBRA MD08



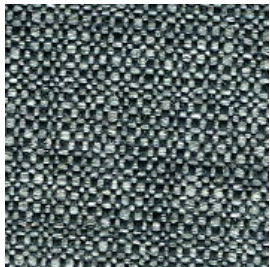
OMBRA MD01



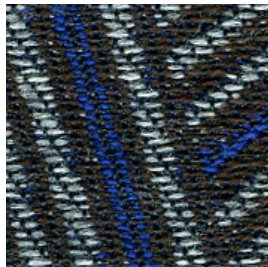
DEVODI SP27



OMBRA MD01



OMBRA MD02



DEVODI SP30

# Brionne

## Category: Special

PARALLEL Composition: 31% WO, 24% PL, 23% PC, 20% CO, 2% PA

RELLA Composition: 28% WO, 26% PL, 24% PC, 18% CO, 4% PA

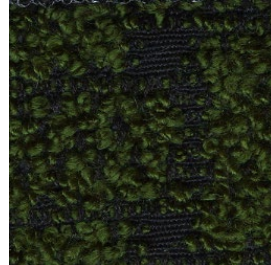
BRIONNE Composition: 31% PL, 26% WO, 22% PC, 18% CO, 3% PA



PARALLEL SP09



RELLA SP08



PARALLEL SP13



RELLA SP04



BRIONNE SP20



PARALLEL SP14



RELLA SP05



BRIONNE SP21



PARALLEL SP10



RELLA SP02



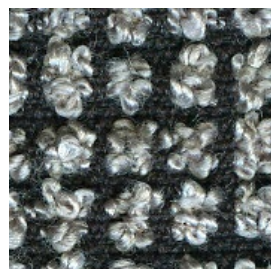
BRIONNE SP17



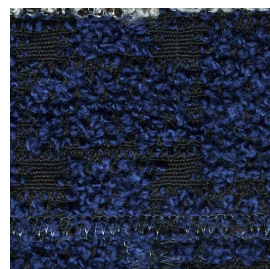
PARALLEL SP15



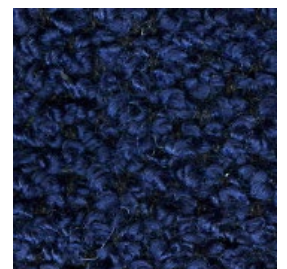
RELLA SP06



BRIONNE SP22



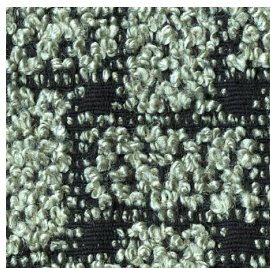
PARALLEL SP11



RELLA SP03



BRIONNE SP18



PARALLEL SP12



RELLA SP01



BRIONNE SP19



PARALLEL SP16



RELLA SP07



BRIONNE SP23

# Samba

Category: Class - CARAVAGGIO Composition: 100% PL

Category: 800 - PLAIN Composition: 100% PL

Category: 800 - STUOIA Composition: 54% PC, 46% PL

Category: 800 - MELANGE Composition: 54% PC, 46% PL



CARAVAGGIO EB24



PLAIN 8D81



STUOIA 8D92



MELANGE 8D72



PLAIN 8D80



CARAVAGGIO EB25



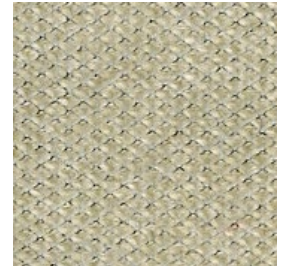
PLAIN 8D84



STUOIA 8D93



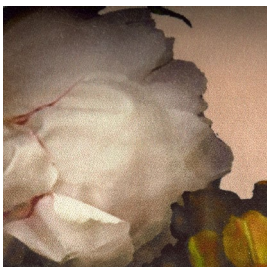
PLAIN 8D83



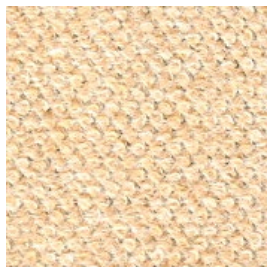
PLAIN 8D82



MELANGE 8D73



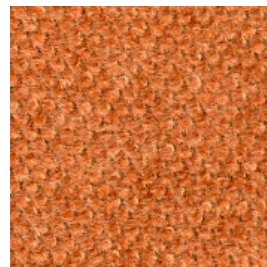
CARAVAGGIO EB26



PLAIN 8D87



MELANGE 8D74



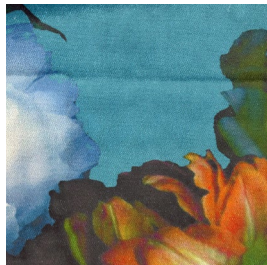
PLAIN 8D86



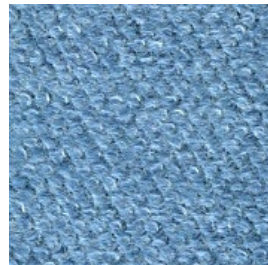
PLAIN 8D85



STUOIA 8D94



CARAVAGGIO EB27



PLAIN 8D89



STUOIA 8D95



MELANGE 8D75



PLAIN 8D88

# Samba

Category: Class - CARAVAGGIO Composition: 100% PL

Category: 800 - PLAIN Composition: 100% PL

Category: 800 - STUOIA Composition: 54% PC, 46% PL

Category: 800 - MELANGE Composition: 54% PC, 46% PL



CARAVAGGIO

EB23



MELANGE

8D71



PLAIN

8D79



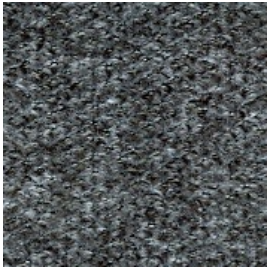
PLAIN

8D78



STUOIA

8D91



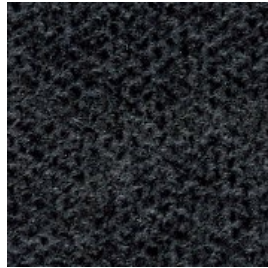
PLAIN

8D77



STUOIA

8D90



PLAIN

8D76



MELANGE

8D70



---

**ITALIER**

[www.italier.cz](http://www.italier.cz) | [info@italier.cz](mailto:info@italier.cz) | +420 774 431 196