

RR
Gabriel, Runner

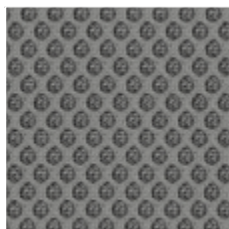
Designer Inger Mosholt Nielsen
100% PL
70.000 Martindale



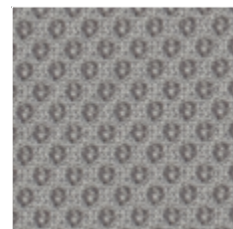
RR01_Runner 60999



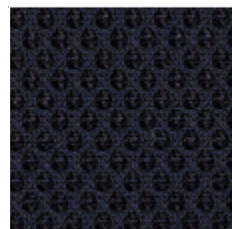
RR02_Runner 60025



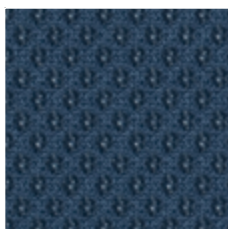
RR03_Runner 60011



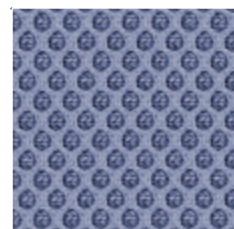
RR14_Runner 60165



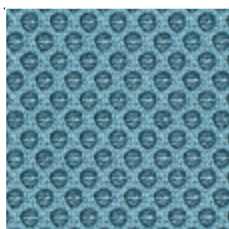
RR08_Runner 66064



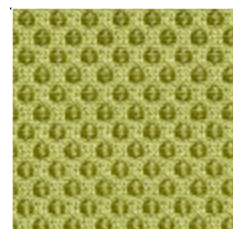
RR12_Runner 66140



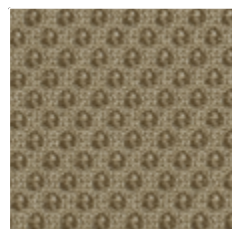
RR09_Runner 65078



RR15_Runner 66063



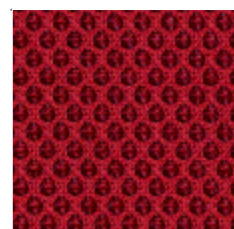
RR05_Runner 68056



RR13_Runner 61110



RR06_Runner 63034



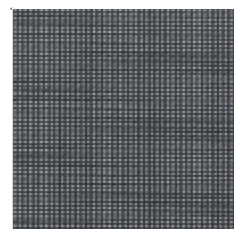
RR07_Runner 64089

RP
Plastitex, Net Medium

70% PVC, 30% PL
100.000 Martindale



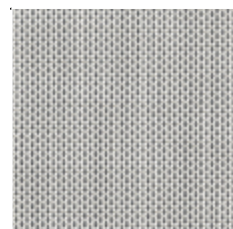
RP10



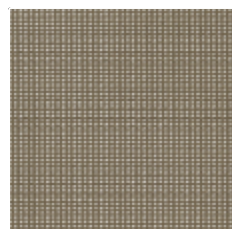
RP11



RP12



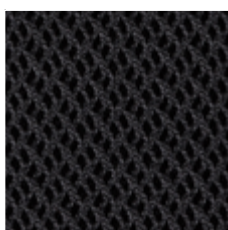
RP21



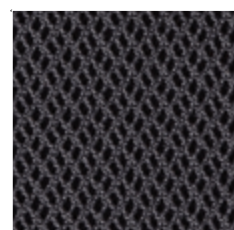
RP20

RY
Gabriel, Rhythm

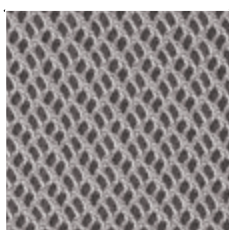
100% PL Fr
100.000 Martindale



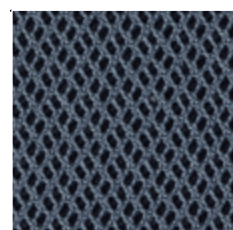
RY01_Rhythm 60999



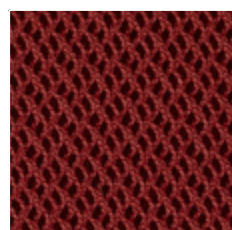
RY02_Rhythm 60025



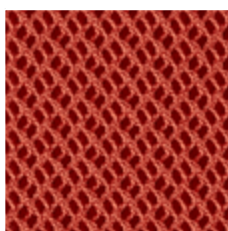
RY03_Rhythm 60165



RY09_Rhythm 66152



RY06_Rhythm 63068



RY12_Rhythm 63067



	Composizione	Composition
PA	Poliammidica	Polyamide
PL	Poliestere	Polyester
PL Fr	Poliestere ignifugo	Flame retardant polyester
Tr Cs	Trevira CS	Trevira CS
W	Lana	Wool
WV	Lana Vergine	Virgin Wool

	Caratteristiche	Features
	Ignifugo	Flame retardant
	Riciclabile	Recyclable
	Riciclato	Recycled

	Certificazioni	Certifications
	Non contiene metalli pesanti	No heavy metals
	EU Ecolabel è un marchio europeo che certifica il ridotto impatto ambientale del prodotto	EU Ecolabel is a European brand that certifies the reduced environmental impact of the product
	GREENGUARD Certification è un marchio europeo che certifica il basso livello di emissioni chimiche	GREENGUARD Certification is a brand that certifies the low level of chemical emissions
	L'etichetta Oeko-Tex® STANDARD 100 garantisce che si può essere certi che ogni componente di questo articolo è stato testato per le sostanze nocive e che l'articolo è quindi innocuo in termini ecologici umani	The Oeko-Tex® STANDARD 100 label guarantees that every component of the article, has been tested for harmful substances and that the article therefore is harmless in human ecological terms

Note sui rivestimenti — Per ragioni tecniche non è possibile garantire lo stesso tono di colore tra un lotto di produzione ed un altro. Leggere differenze, con una tolleranza del ±5% devono intendersi come normali e non possono dar adito a reclami o alla risoluzione del contratto. Sitland spa si riserva il diritto di apportare modifiche alle finiture contenute nella presente cartella senza preavviso alcuno. Ulteriori informazioni sulle caratteristiche tecniche di ogni singolo rivestimento sono disponibili nel sito www.sitland.com

Pulizia e manutenzione — Per la manutenzione dei tessuti consigliamo di passare con frequenza almeno mensile la superficie, utilizzando un aspirapolvere. In caso di unto, utilizzare solamente un panno leggermente umido e sapone neutro, non strofinare e lasciare asciugare naturalmente.

Note on upholstery — For technical reasons, batch to batch variations in shade may occur. Slight differences, within a tolerance of ±5%, are to be considered as normal and acceptable and they cannot give rise to claims or to a breach of contract. Sitland spa reserves the right to make modifications to the finishes contained in the present folder without any prior communication. Further information on the technical characteristics of each individual upholstery is available on the website www.sitland.com

Cleaning and maintenance — For the fabrics maintenance, we suggest you to regularly vacuum clean. Stains can be cleaned with a soft damp cloth and mild soap; do not rub and allow to dry naturally.

Sitland spa
Via Cà Silvestre 52
36024 Nanto, Vicenza - I
t +39 0444 637 100
f +39 0444 638 407
info@sitland.com
www.sitland.com



A brand of Mezzalira Investment Group
www.mig.it

CARTT2021

Tessuti e reti / Fabrics and meshes / Gewebe und Maschen / Tissus et Mailles / Tejidos y Mallas

sitland

Tessuti e reti / Fabrics and meshes / Gewebe und Maschen / Tissus et Mailles / Tejidos y Mallas

sitland

SY
Camira, Synergy

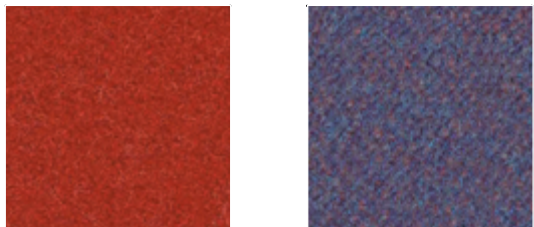
95% WV, 5% PA
100.000 Martindale



SY01_Synergy LDS27 SY05_Synergy LDS17 SY04_Synergy LDS35 SY02_Synergy LDS08 SY07_Synergy LDS58



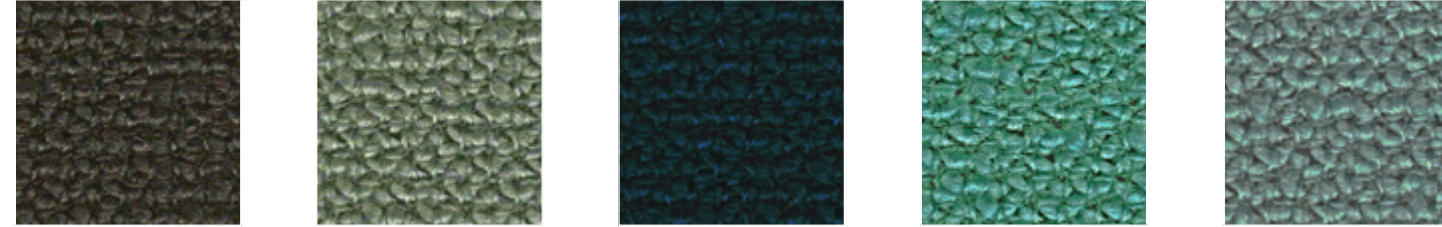
SY09_Synergy LDS56 SY40_Synergy LDS54 SY16_Synergy LDS32 SY46_Synergy LDS37 SY10_Synergy LDS83



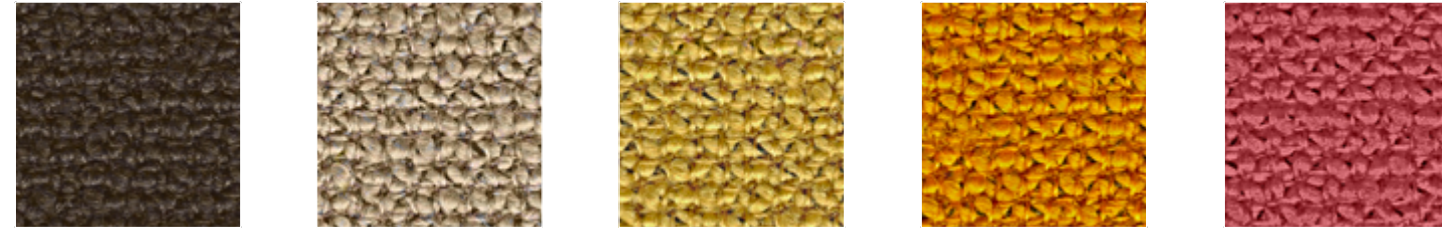
SY13_Synergy LDS84 SY32_Synergy LDS64

YO
Camira, Yoredale

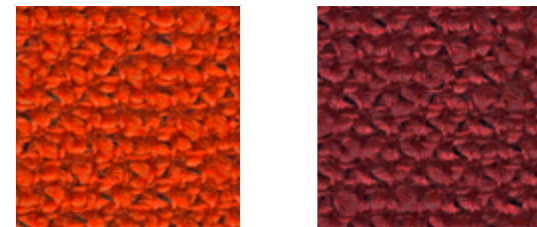
95% W, 3% PL, 2% PA
50.000 Martindale



YO01_Yoredale UDA25 YO02_Yoredale UDA04 YO09_Yoredale UDA17 YO11_Yoredale UDA23 YO10_Yoredale UDA22



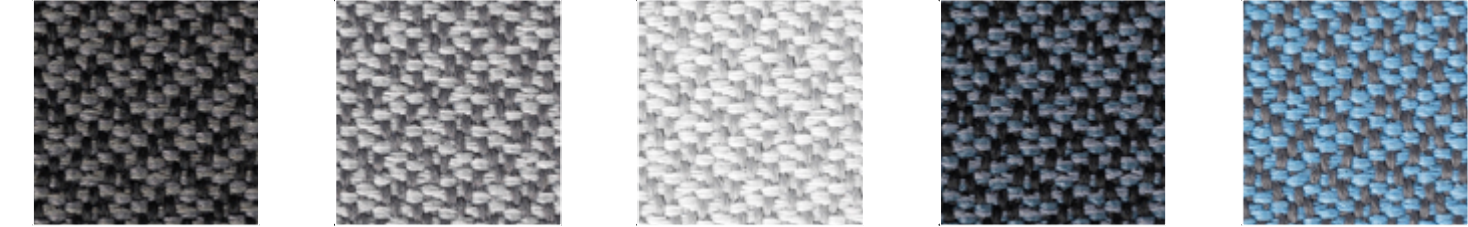
YO04_Yoredale UDA06 YO03_Yoredale UDA02 YO07_Yoredale UDA05 YO08_Yoredale UDA16 YO12_Yoredale UDA24



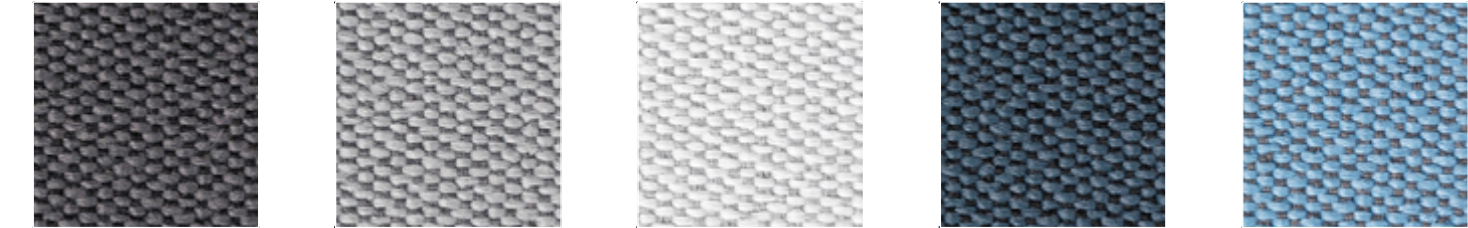
YO06_Yoredale UDA12 YO05_Yoredale UDA14

DF / DS
Vescom, Deans

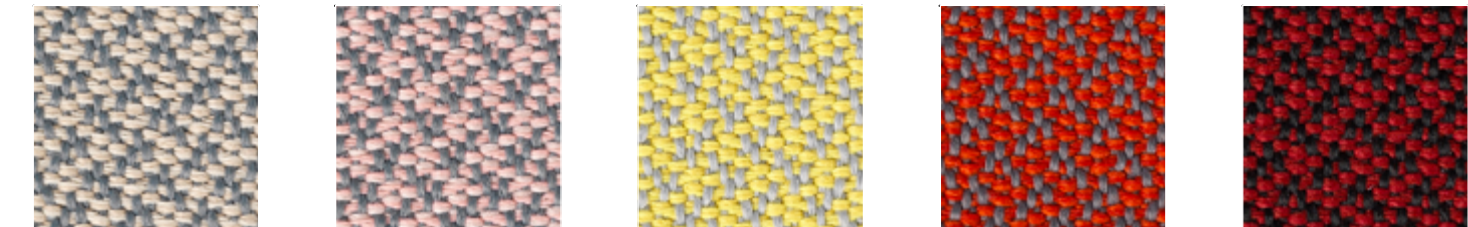
100% PL Fr
110.000 Martindale



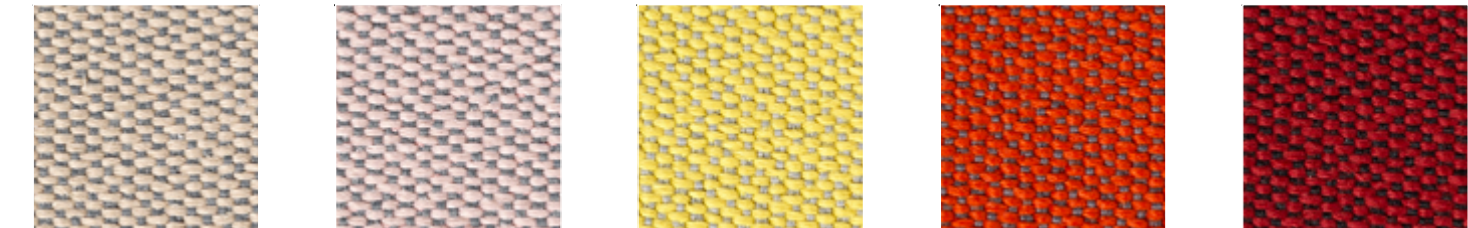
DF01_Deans 7048.12 DF02_Deans 7048.03 DF03_Deans 7048.09 DF04_Deans 7048.08 DF05_Deans 7048.10



DS01_Deans 7048.12 DS02_Deans 7048.03 DS03_Deans 7048.09 DS04_Deans 7048.08 DS05_Deans 7048.10



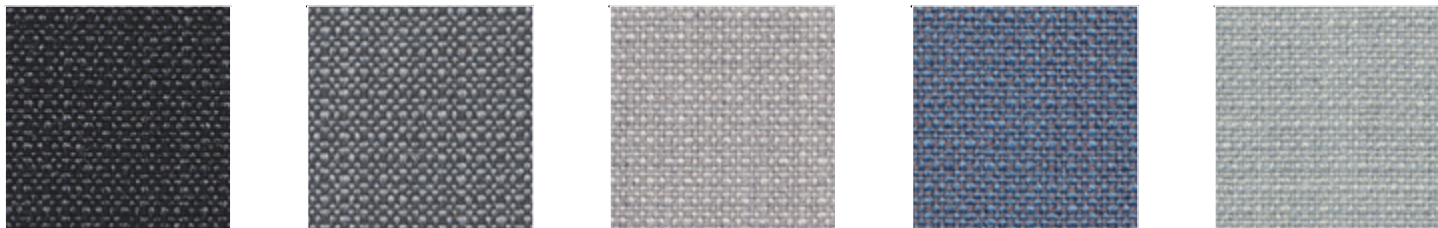
DF11_Deans 7048.01 DF09_Deans 7048.14 DF10_Deans 7048.04 DF07_Deans 7048.13 DF06_Deans 7048.15



DS11_Deans 7048.01 DS09_Deans 7048.14 DS10_Deans 7048.04 DS07_Deans 7048.13 DS06_Deans 7048.15

CS
Gabriel, Crisp

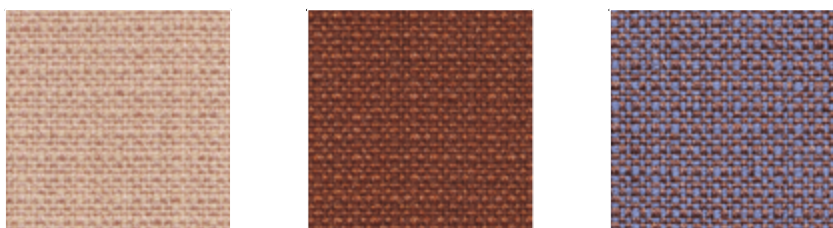
Designer Mette Krebs Petersen
93% W of New Zealand, 7% PA
200.000 Martindale



CS38_Crisp 04013 CS40_Crisp 04022 CS08_Crisp 04033 CS04_Crisp 04604 CS03_Crisp 04034



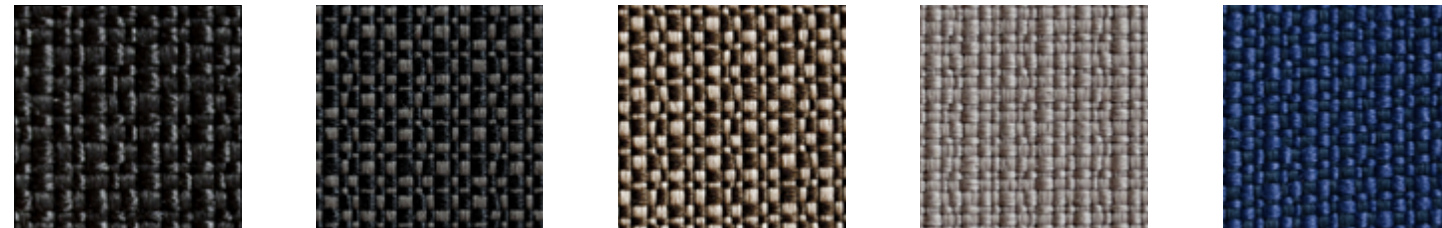
CS35_Crisp 04752 CS23_Crisp 04603 CS05_Crisp 04115 CS07_Crisp 04032 CS37_Crisp 04771



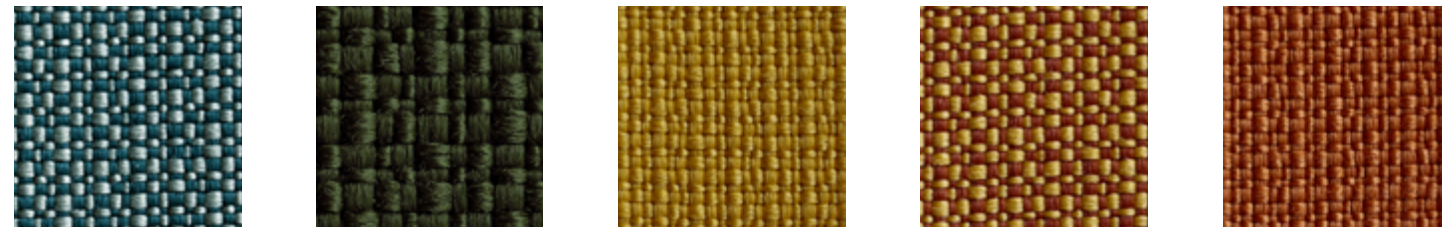
CS27_Crisp 04711 CS15_Crisp 04301 CS26_Crisp 04702

IS,
Rada, Iris

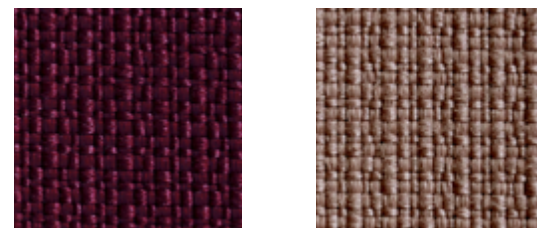
100% recycled PET
100.000 Martindale



IS31_Iris 200 IS48_Iris 605 IS46_Iris 603 IS45_Iris 601 IS54_Iris 707



IS51_Iris 703 IS56_Iris 801 IS44_Iris 501 IS38_Iris 308 IS37_Iris 307



IS33_Iris 303 IS30_Iris 901

RF
FiDiVi Service, Polo

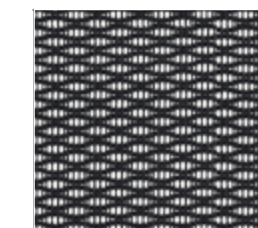
100% PL
100.000 Martindale



RF01 RF04 RF02 RF15 RF03

IR
FiDiVi Service, Iron

100% PL
100.000 Martindale



IR01