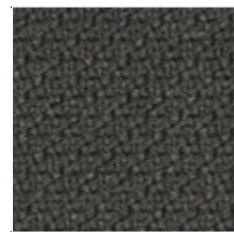


**ST**  
**Gabriel, Step**

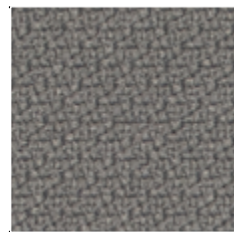
Designer Inger Mosholt Nielsen  
100% PL recycled post consumer  
100.000 Martindale



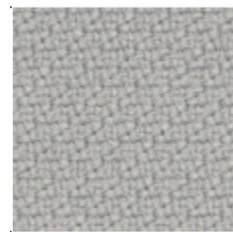
ST01\_Step 60999



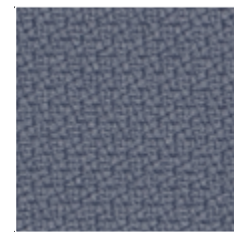
ST03\_Step 60021



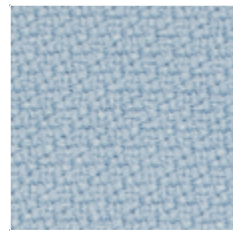
ST04\_Step 60011



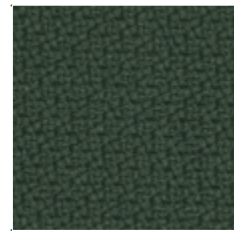
ST09\_Step 60004



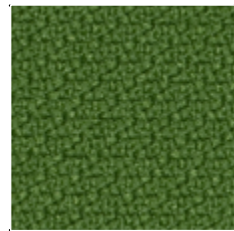
ST31\_Step 66152



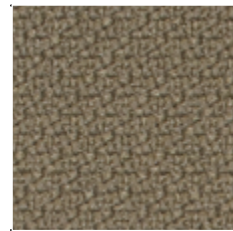
ST30\_Step 67004



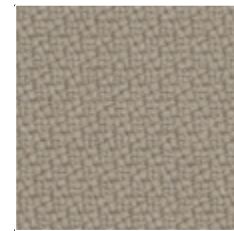
ST32\_Step 68161



ST12\_Step 68120



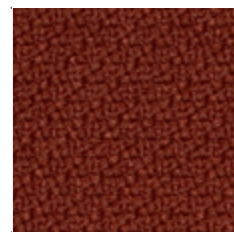
ST29\_Step 61103



ST11\_Step 61149



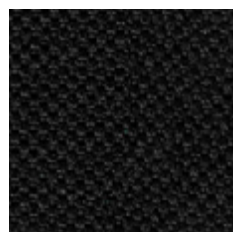
ST08\_Step 62057



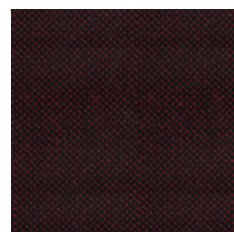
ST28\_Step 63075

**AV**  
**Sitland, Active Plus**

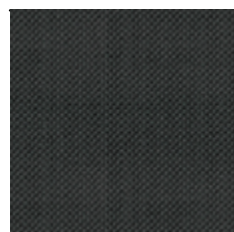
100% PL FR  
100.000 Martindale



AV01



AV02



AV03



AV04



AV05



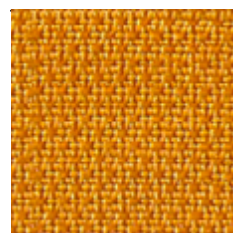
AV06



AV07



AV08



AV09



AV10

	Composizione	Composition
PA	Poliammidica	Polyamide
PL	Poliestere	Polyester
PL Fr	Poliestere ignifugo	Flame retardant polyester
Tr Cs	Trevira CS	Trevira CS
W	Lana	Wool
WV	Lana Vergine	Virgin Wool

	Caratteristiche	Features
	Ignifugo	Flame retardant
	Riciclabile	Recyclable
	Riciclato	Recycled

	Certificazioni	Certifications
	Non contiene metalli pesanti	No heavy metals

	EU Ecolabel è un marchio europeo che certifica il ridotto impatto ambientale del prodotto	EU Ecolabel is a European brand that certifies the reduced environmental impact of the product
--	---	--

	Fibra di poliestere modificata "Flame Retardant permanente": capace di conservare con l'invecchiamento, l'usura e i lavaggi le proprietà ignifughe della fibra. I tessuti realizzati con fibra Trevira CS superano in tutto il mondo i più severi test di reazione al fuoco raggiungendo ovunque la miglior classificazione (Classe 1 in Italia)	Modified polyester fiber "Permanent Flame Retardant": capable of preserving the flame retardant properties of the fiber with aging, wear and washing. Fabrics made with Trevira CS fiber pass the most severe reaction to fire tests worldwide, reaching the best classification everywhere (Classe 1 in Italy)
--	--	---

	L'etichetta Oeko-Tex® STANDARD 100 garantisce che si può essere certi che ogni componente di questo articolo è stato testato per le sostanze nocive e che l'articolo è quindi innocuo in termini ecologici umani	The Oeko-Tex® STANDARD 100 label guarantees that every component of the article, has been tested for harmful substances and that the article therefore is harmless in human ecological terms
--	--	--

	Impedisce la sviluppo dei batteri e degli odori, protezione duratura integrata grazie alla funzione igienica Sanitized®	Hinders bacteria growth and odor development, built-in durable protection thanks to the Sanitized® hygiene function
--	---	---

**Sitland spa**  
Via Cà Silvestre 52  
36024 Nanto, Vicenza - I  
t +39 0444 637 100  
f +39 0444 638 407  
info@sitland.com  
**www.sitland.com**



A brand of Mezzalira Investment Group  
**www.mig.it**

**Note sui rivestimenti** — Per ragioni tecniche non è possibile garantire lo stesso tono di colore tra un lotto di produzione ed un altro. Leggere differenze, con una tolleranza del ±5% devono intendersi come normali e non possono dar adito a reclami o alla risoluzione del contratto. Sitland spa si riserva il diritto di apportare modifiche alle finiture contenute nella presente cartella senza preavviso alcuno. Ulteriori informazioni sulle caratteristiche tecniche di ogni singolo rivestimento sono disponibili nel sito [www.sitland.com](http://www.sitland.com)

**Pulizia e manutenzione** – Per la manutenzione dei tessuti consigliamo di passare con frequenza almeno mensile la superficie, utilizzando un aspirapolvere. In caso di unto, utilizzare solamente un panno leggermente umido e sapone neutro, non strofinare e lasciare asciugare naturalmente.

**Note on upholstery** – For technical reasons, batch to batch variations in shade may occur. Slight differences, within a tolerance of ±5%, are to be considered as normal and acceptable and they cannot give rise to claims or to a breach of contract. Sitland spa reserves the right to make modifications to the finishes contained in the present folder without any prior communication. Further information on the technical characteristics of each individual upholstery is available on the website [www.sitland.com](http://www.sitland.com)

**Cleaning and maintenance** – For the fabrics maintenance, we suggest you to regularly vacuum clean. Stains can be cleaned with a soft damp cloth and mild soap; do not rub and allow to dry naturally.

Tessuti / Fabrics / Gewebe / Tissus / Tejidos

**Tessuti / Fabrics / Gewebe / Tissus / Tejidos**

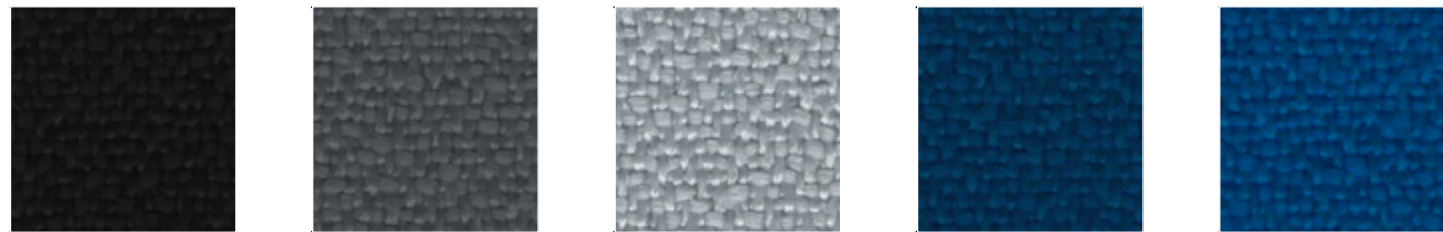
sitland

**sitland**

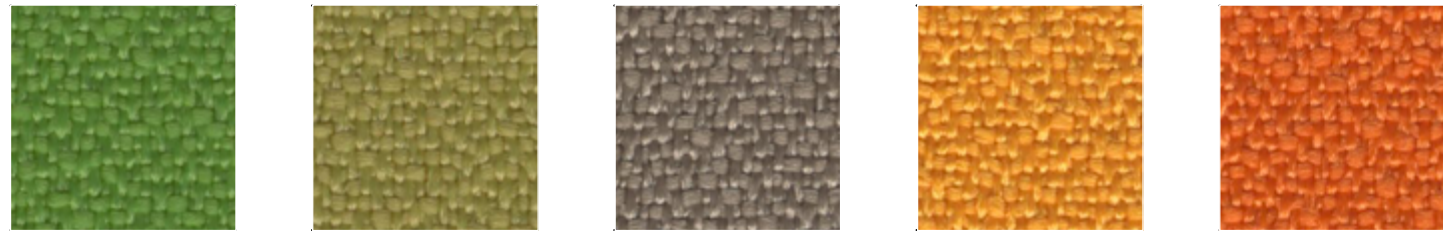
CARTI12021

**BN**  
**FiDiVi, Bondai**

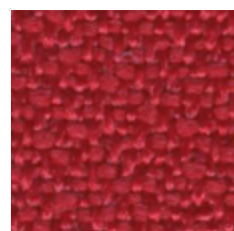
100% PL  
150.000 Martindale



BN01\_Bondai 8033    BN04\_Bondai 8010    BN18\_Bondai 8078    BN10\_Bondai 6098    BN02\_Bondai 6016



BN17\_Bondai 7048    BN12\_Bondai 7021    BN20\_Bondai 1008    BN24\_Bondai 3005    BN19\_Bondai 3012



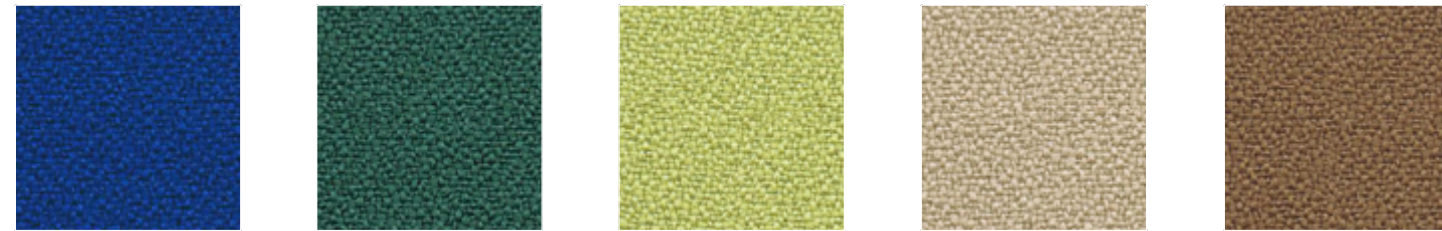
BN05\_Bondai 4011

**AB**  
**Camira, Xtreme Plus**

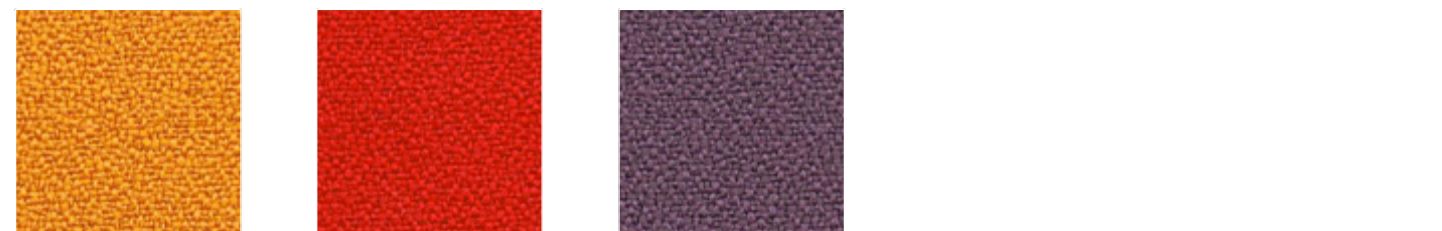
100% post-consumer recycled PL  
100.000 Martindale



AB03\_Xtreme YS009    AB51\_Xtreme YS172    AB38\_Xtreme YS046    AB12\_Xtreme YS081    AB47\_Xtreme YS173



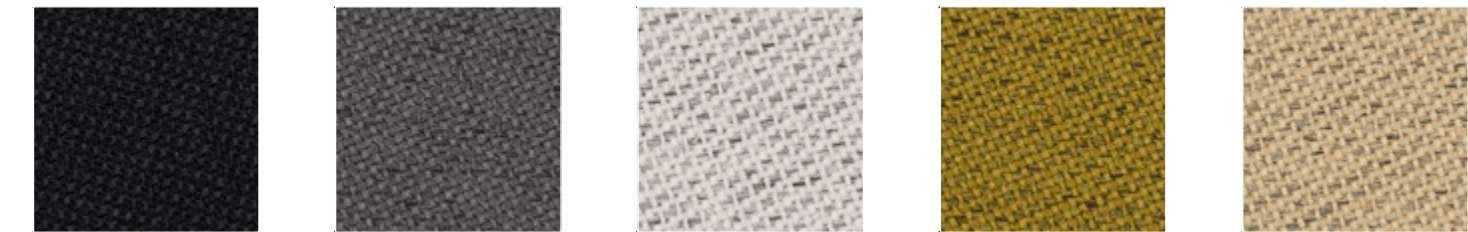
AB04\_Xtreme YS082    AB40\_Xtreme YS047    AB25\_Xtreme YS096    AB17\_Xtreme YS108    AB34\_Xtreme YS091



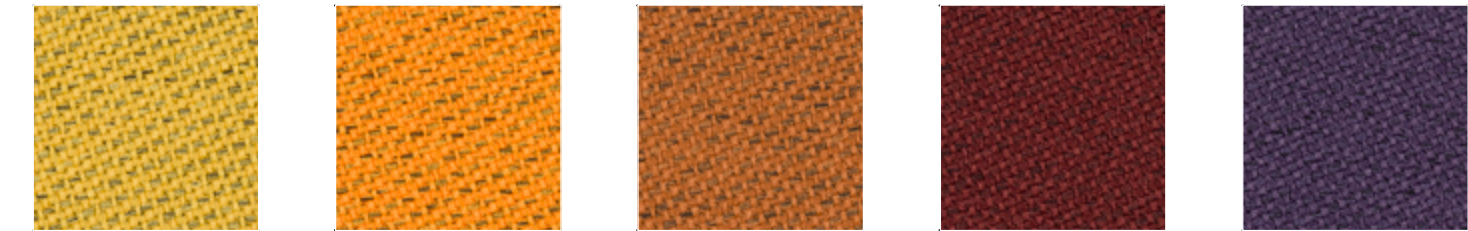
AB37\_Xtreme YS072    AB15\_Xtreme YS079    AB21\_Xtreme YS102

**CH**  
**Gabriel, Chili**

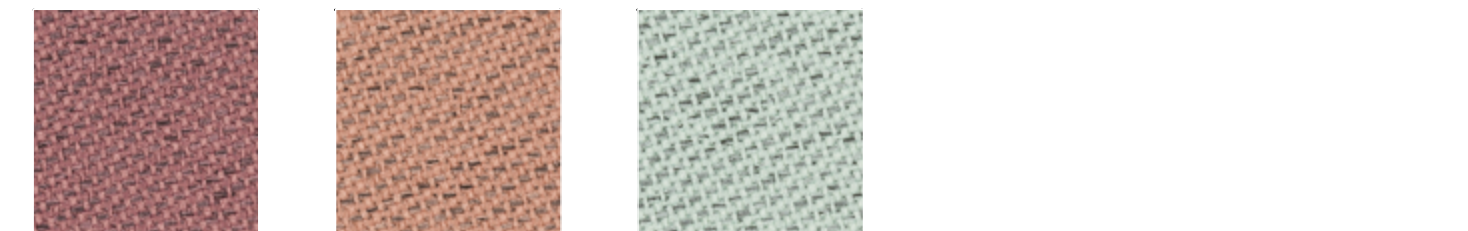
Designer Inger Mosholt Nielsen  
75% post-consumer recycled PL Fr, 25% PL Fr  
60.000 Martindale



CH13\_Chili 60999    CH14\_Chili 61171    CH15\_Chili 61174    CH17\_Chili 68198    CH16\_Chili 61172



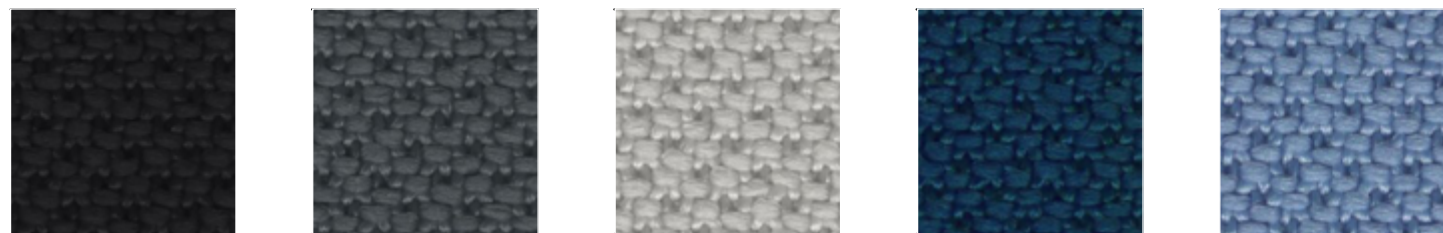
CH25\_Chili 62086    CH24\_Chili 63093    CH23\_Chili 63099    CH21\_Chili 64203    CH19\_Chili 65110



CH20\_Chili 65111    CH22\_Chili 63092    CH18\_Chili 68191

**AL**  
**FiDiVi, Alba**

100% PL  
100.000 Martindale



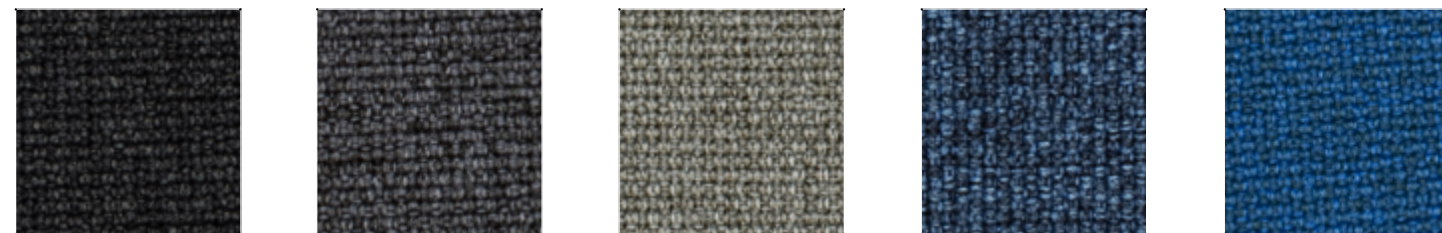
AL01\_Alba 8033    AL02\_Alba 8003    AL03\_Alba 8078    AL05\_Alba 6098    AL21\_Alba 6005



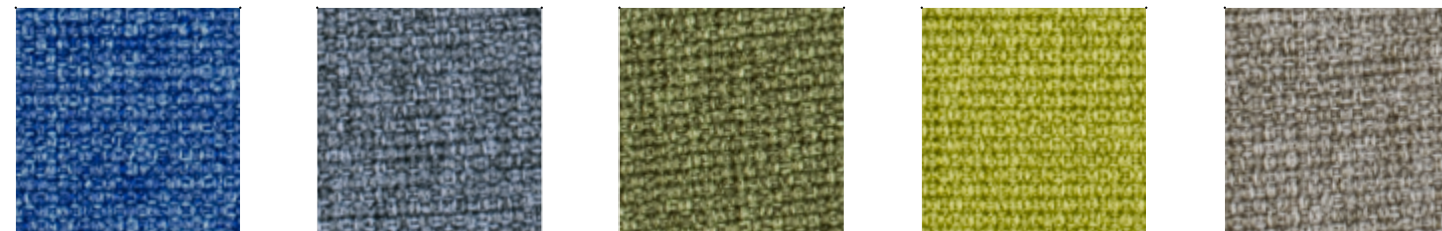
AL09\_Alba 6007    AL16\_Alba 7026    AL19\_Alba 1006    AL13\_Alba 4004    AL07\_Alba 4027

**ME**  
**Gabriel, Medley**

Designer Mette Krebs Petersen  
100% PL  
75.000 Martindale



ME01\_Medley 60999    ME02\_Medley 60004    ME03\_Medley 60003    ME09\_Medley 66010    ME15\_Medley 66007



ME08\_Medley 66009    ME16\_Medley 66008    ME13\_Medley 68005    ME11\_Medley 68002    ME04\_Medley 61002



ME07\_Medley 65011    ME17\_Medley 65012    ME18\_Medley 64019

**IP**  
**Pugi, Ipanema D**

100% PL Fr - (Tr Cs)  
50.000 Martindale



IP01\_Ipanema D 651    IP05\_Ipanema D 626    IP12\_Ipanema D    IP13\_Ipanema D 13    IP02\_Ipanema D 307



IP15\_Ipanema D    IP11\_Ipanema D 455    IP08\_Ipanema D 58    IP16\_Ipanema D    IP09\_Ipanema D 203



IP17\_Ipanema D