



Quadrifoglio Group

ITALIER



VZORNÍK ČALOUNĚNÍ

B01

Pugi•rg®

Fabric

100% polyester FR - Trevira CS

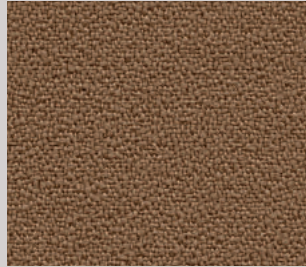
Martindale: 100.000 cycles ± 20%

Reaction to fire: EN 1021 Part 1-2 (UE), Classe 1 (IT), BS 5852 Crib 5 (UK), M1 (FR), B1 DIN 4102 (D), TB 117:2013 (USA)

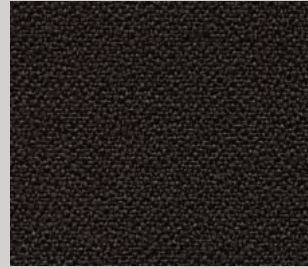
OEKO-TEX®
CONFIDENCE IN TEXTILES
STANDARD 100



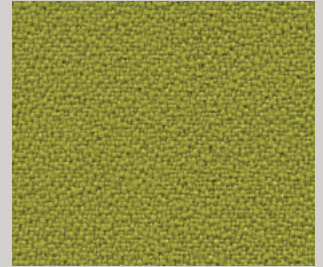
B01/009



B01/016



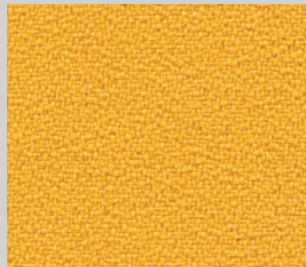
B01/027



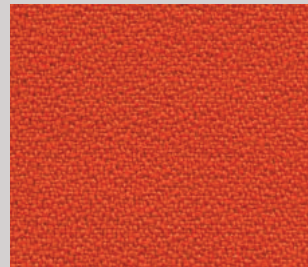
B01/013



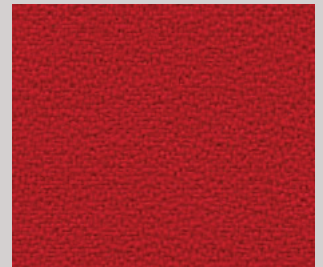
B01/011



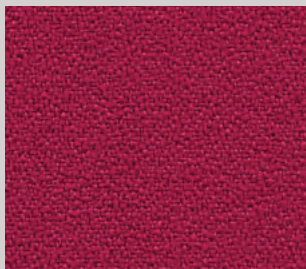
B01/010



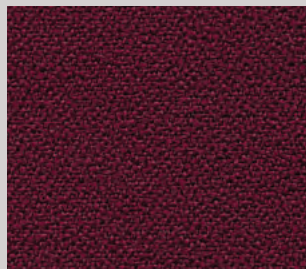
B01/017



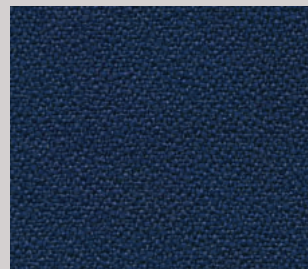
B01/018



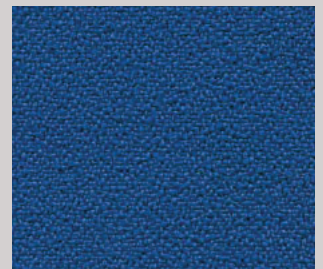
B01/021



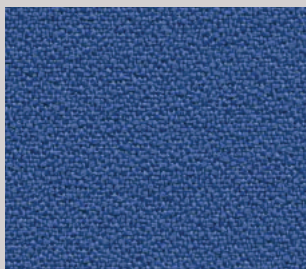
B01/024



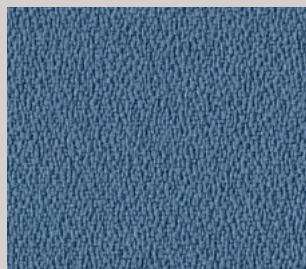
B01/026



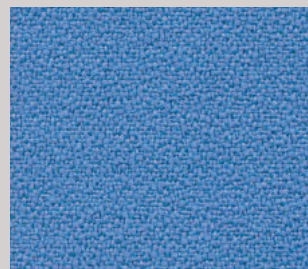
B01/023



B01/025



B01/020



B01/019



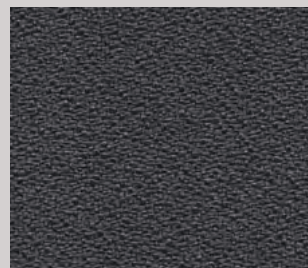
B01/014



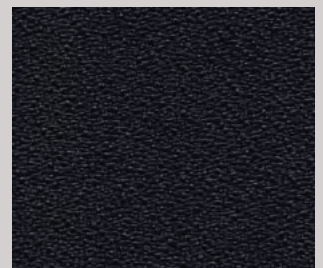
B01/012



B01/015



B01/222



B01/028

Black

Slight differences between colour batches have to be considered normal

B03



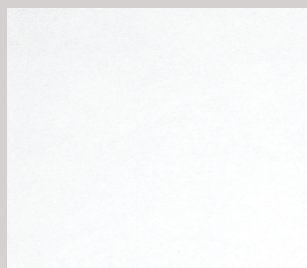
Simil leather

76% PVC - 2% polyurethane - 22% polyester

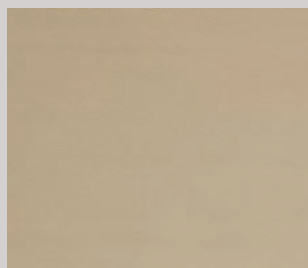
Martindale: 75.000 cycles

Reaction to fire: EN 1021 Part 1-2 (UE), Classe 1 IM (IT),

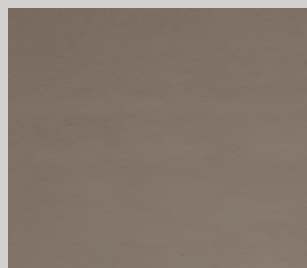
BS 5852-1:1979 Part I (UK), TB 117:2013 (USA)



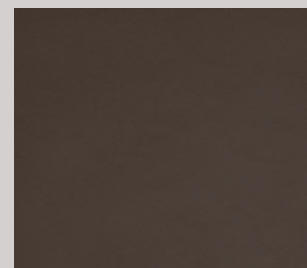
B03/141



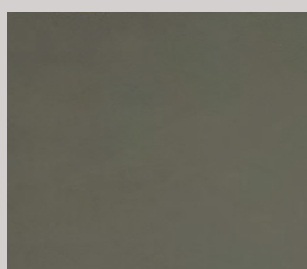
B03/181



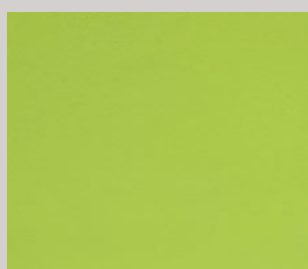
B03/185



B03/183



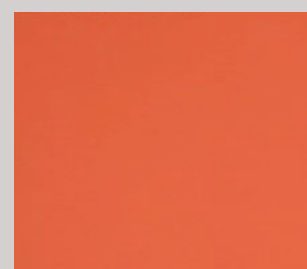
B03/177



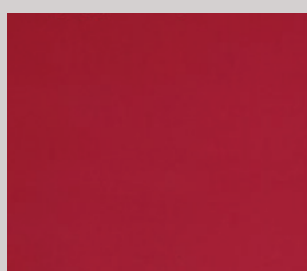
B03/175



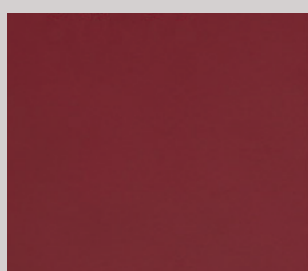
B03/169



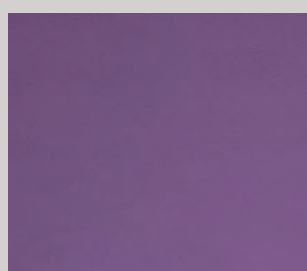
B03/176



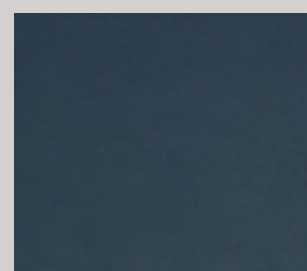
B03/179



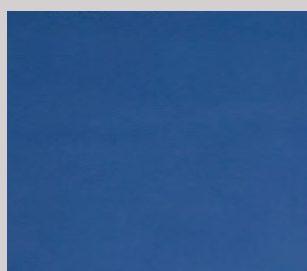
B03/186



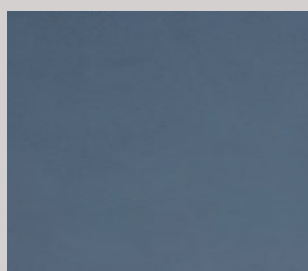
B03/187



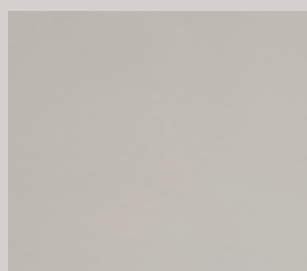
B03/180



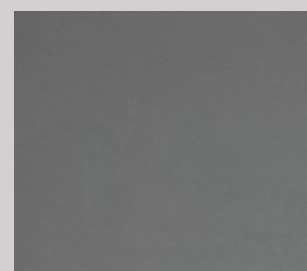
B03/182



B03/178



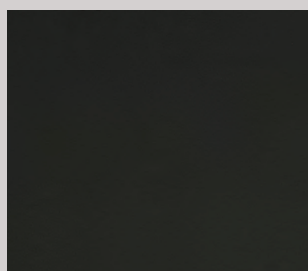
B03/170



B03/137



B03/184



B03/138

Black

Slight differences between colour batches have to be considered normal

C01

Pugi•rg®

Fabric

100% polyester FR - Trevira CS

Martindale: 70.000 cycles ± 20%

Reaction to fire: EN 1021 Part 1-2 (UE), Classe 1 (IT), M1 (FR),
BS 5852 Crib 5 (UK), B1 DIN 4102 (D), TB 117:2013 (USA)

OEKO-TEX®
CONFIDENCE IN TEXTILES
STANDARD 100



C01/057



C01/058



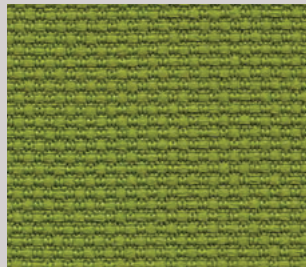
C01/060



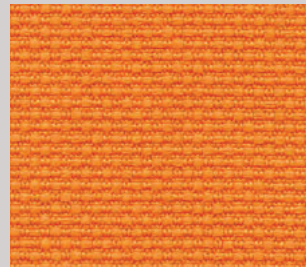
C01/061



C01/059



C01/056



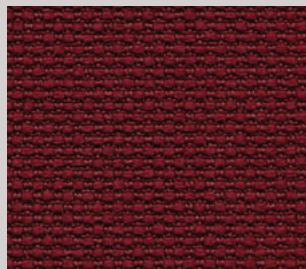
C01/049



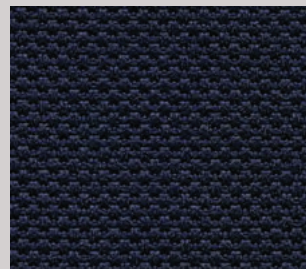
C01/048



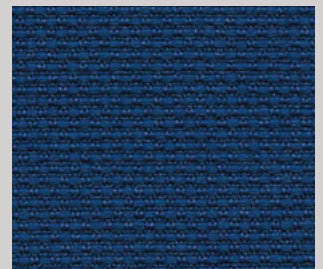
C01/050



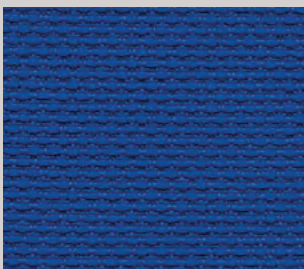
C01/051



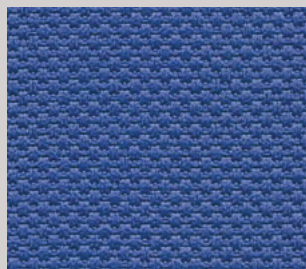
C01/055



C01/054



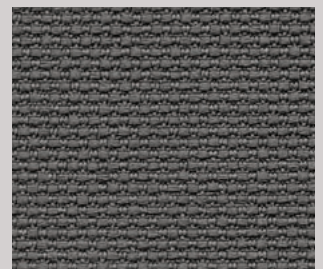
C01/053



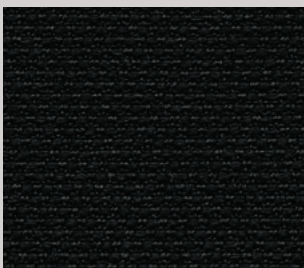
C01/052



C01/063



C01/062



C01/064 Black

Slight differences between colour batches have to be considered normal

C05

Gabriel®

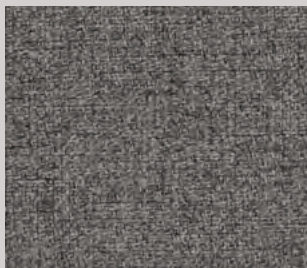
Fabric

100% polyester FR - Trevira CS

Martindale: 100.000 cycles

Reaction to fire: EN 1021 Part 1-2 (UE) M1 (FR), BS 5852 Crib 5 (UK),
Classe 1 (IT), B1 DIN 4102 (D), TB 117:2013 (USA)

OEKO-TEX®
CONFIDENCE IN TEXTILES
STANDARD 100



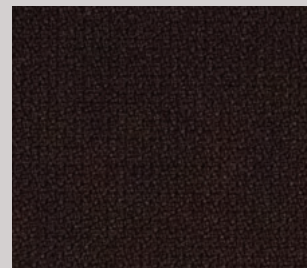
C05/280



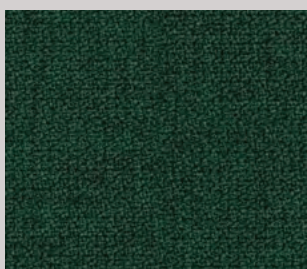
C05/281



C05/285



C05/287



C05/303



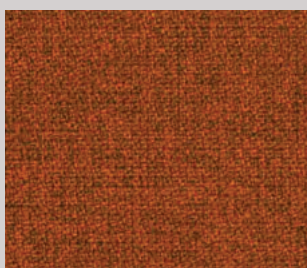
C05/295



C05/302



C05/282



C05/284



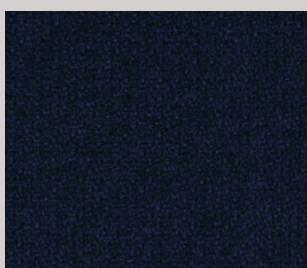
C05/286



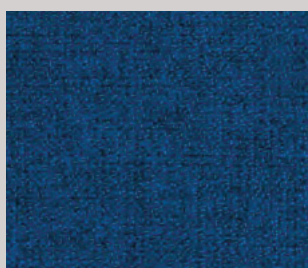
C05/289



C05/288



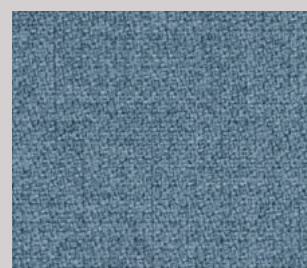
C05/294



C05/292



C05/293



C05/290



C05/291



C05/279



C05/283

Slight differences between colour batches have to be considered normal

D06

SPRADLING®

Simil leather

PVC & polyester

Martindale: >300,000 cycles

Reaction to fire: EN 1021 Part 1-2 (UE), Classe 1 (IT), M1 (FR),
BS 5852 Crib 5 (UK), B1 DIN 4102 (D), TB 117:2013 (USA)



PERMABLOK3®



D06/495



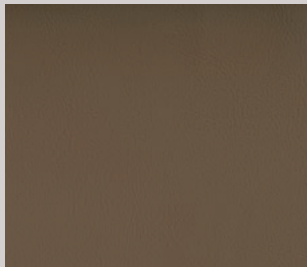
D06/496



D06/497



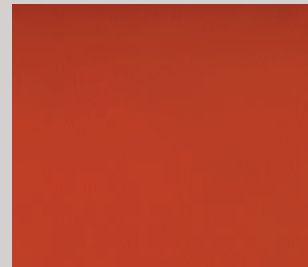
D06/505



D06/498



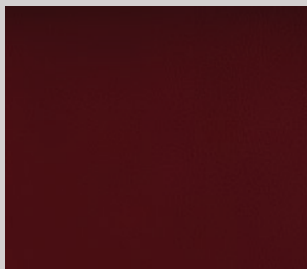
D06/506



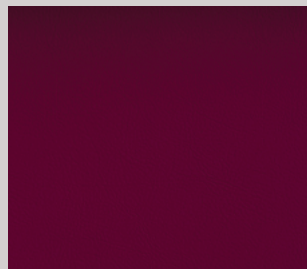
D06/512



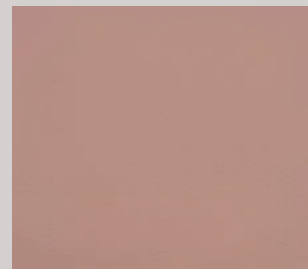
D06/514



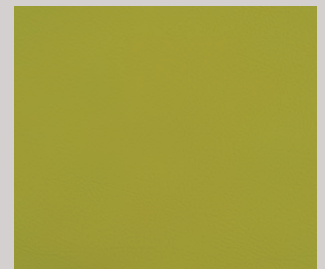
D06/511



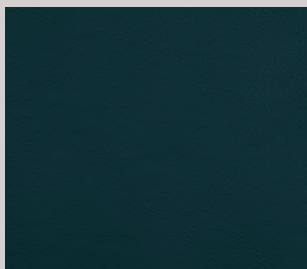
D06/513



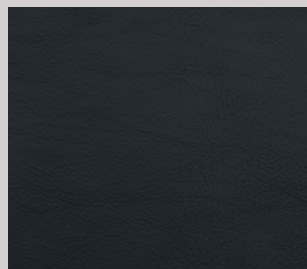
D06/503



D06/509



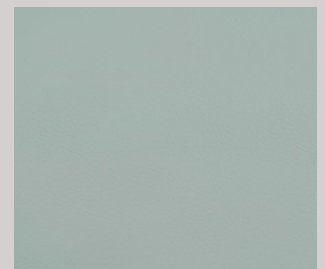
D06/507



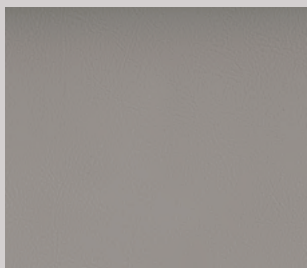
D06/508



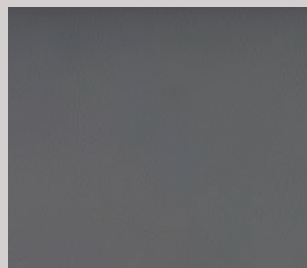
D06/510



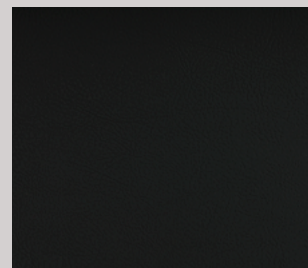
D06/504



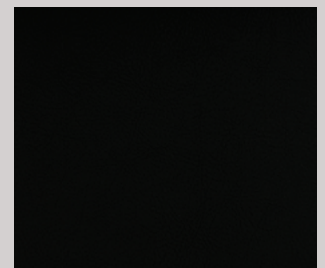
D06/499



D06/500



D06/501



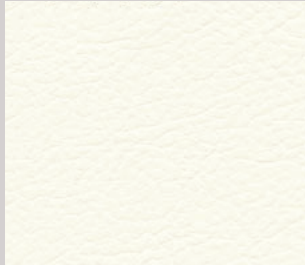
D06/502

Slight differences between colour batches have to be considered normal

P01

GIVIPPELL

Leather
Animal origin: European raw hides
Chrome tanning, aniline dyeing, water pigments finishing.
Reaction to fire: EN 1021 Part 1-2 (UE), TB 117:2013 (USA)



P01/093



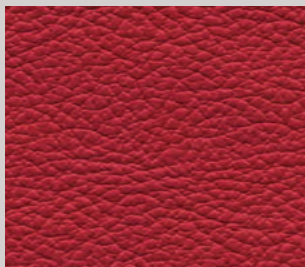
P01/098



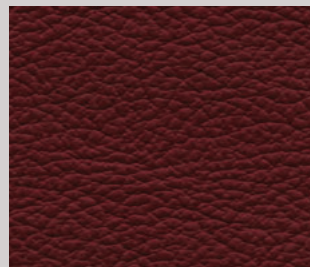
P01/296



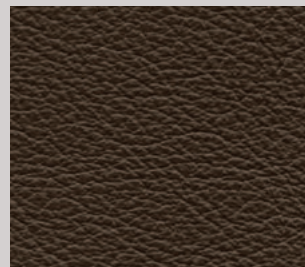
P01/096



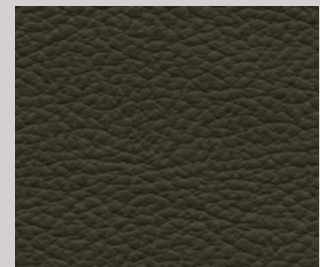
P01/097



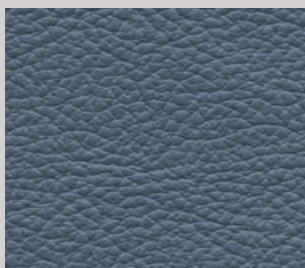
P01/257



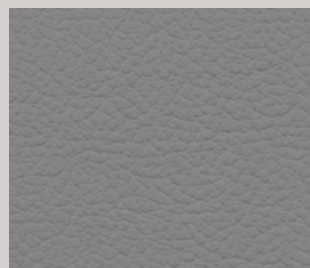
P01/095



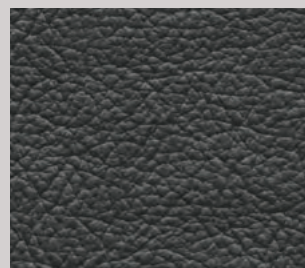
P01/627



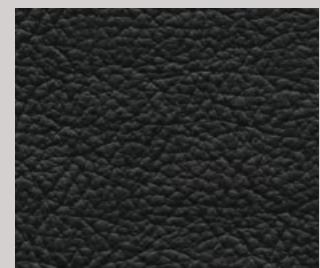
P01/626



P01/145



P01/172



P01/092 Black

Markings such as scars and wrinkles are genuine proof of the natural origin of our leather.
Slight differences between colour batches have to be considered normal

D02

Pugi•rg®

Fabric

100% polyester FR - Trevira CS

Martindale: 100.000 cycles ± 20%

Reaction to fire: EN 1021 Part 1-2 (UE), M1 (FR), BS 5852 Crib 5 (UK),
Classe 1 (IT), B1 DIN 4102 (D), TB 117:2013 (USA)

OEKO-TEX®
CONFIDENCE IN TEXTILES
STANDARD 100



D02/268



D02/271



D02/276



D02/278



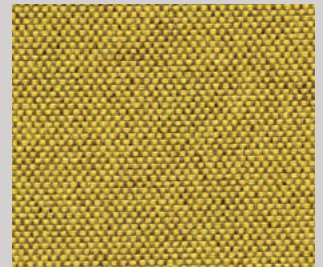
D02/326



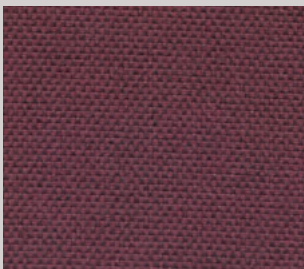
D02/269



D02/341



D02/267



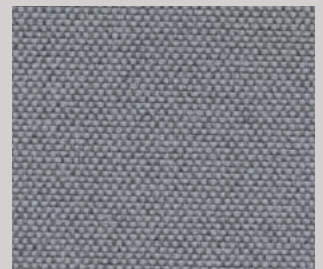
D02/277



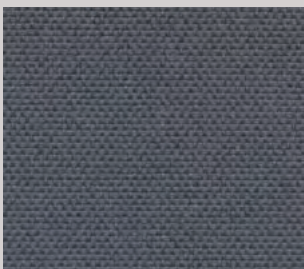
D02/274



D02/272



D02/270



D02/273



D02/275

Slight differences between colour batches have to be considered normal

D03

 Pugli.rg®

Fabric

75% wool - 25% polyester

Martindale: 100.000 cycles ± 20%

Reaction to fire: EN 1021 Part 1-2 (UE), M1 (FR), BS 5852 Crib 5 (UK),

Classe 1 (IT), TB 117:2013 (USA)

OEKO-TEX®
CONFIDENCE IN TEXTILES
STANDARD 100 



D03/363



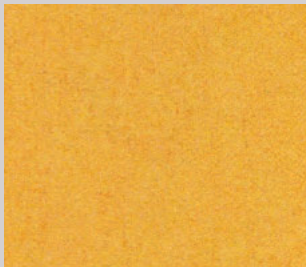
D03/375



D03/370



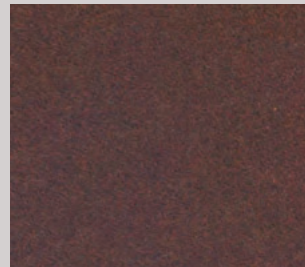
D03/367



D03/365



D03/372



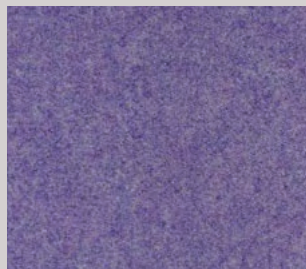
D03/377



D03/381



D03/378



D03/366



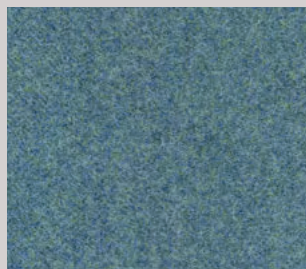
D03/380



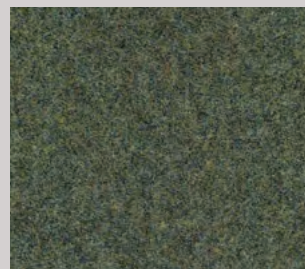
D03/369



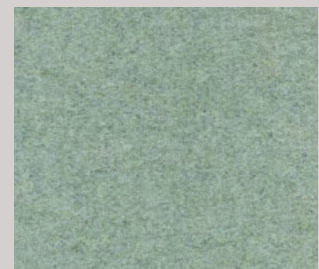
D03/373



D03/368



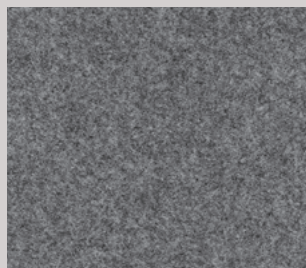
D03/371



D03/364



D03/374



D03/376



D03/379

Slight differences between colour batches have to be considered normal

D04

abitex

Fabric

68% polyester - 32% polypropylene

Martindale: >135.000 cycles

Reaction to fire: EN 1021 Part 1-2 (UE), M1 (FR), Classe 1 (IT),
B1 DIN 4102 (D), TB 117:2013 (USA)



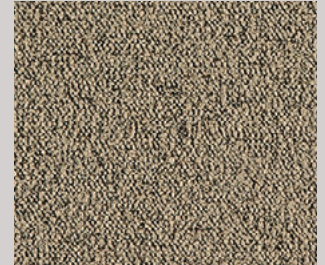
D04/382



D04/400



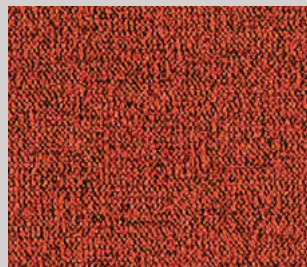
D04/383



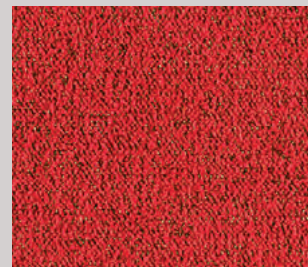
D04/384



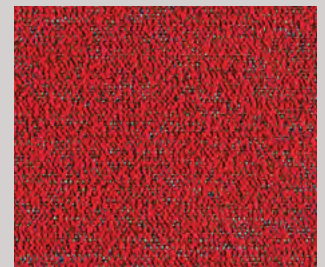
D04/387



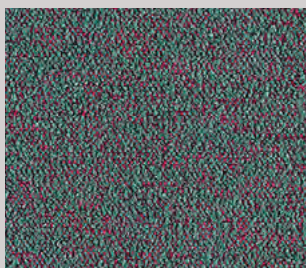
D04/392



D04/390



D04/396



D04/399



D04/398



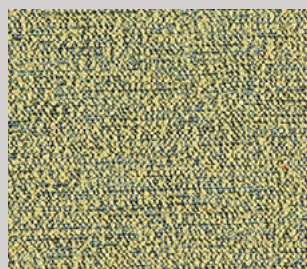
D04/397



D04/401



D04/389



D04/391



D04/395



D04/394



D04/393



D04/385



D04/386



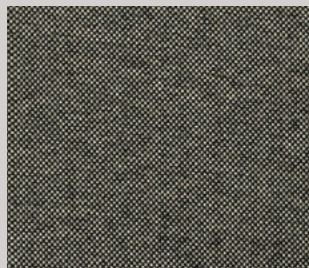
D04/388

Slight differences between colour batches have to be considered normal

D05

camira

Fabric
100% REPREVE® recycled polyester made from used plastic bottles
Martindale: ≥80.000 cycles
Reaction to fire: EN 1021 Part 1-2 (UE), BS 7176 Low and Medium Hazard (UK),
NFPA 260 + UFAC Class1 (USA), TB 117:2013 (USA)



D05/413



D05/407



D05/404



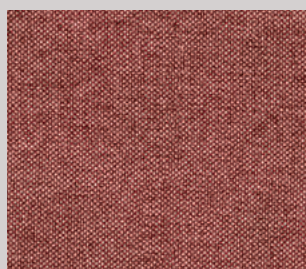
D05/405



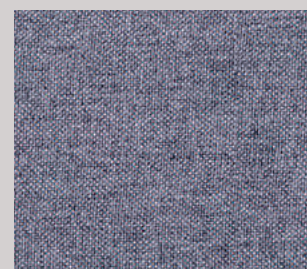
D05/406



D05/402



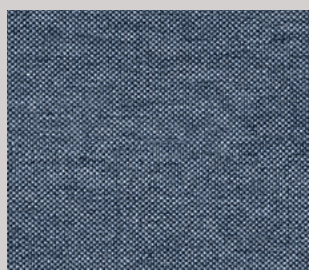
D05/403



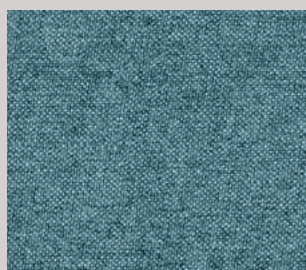
D05/409



D05/415



D05/412



D05/408



D05/410



D05/411



D05/414



D05/416

Slight differences between colour batches have to be considered normal

E01

Gabriel

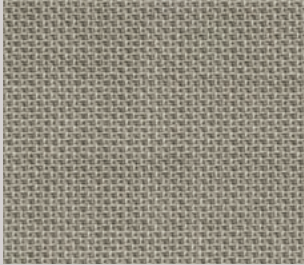
Fabric

85% New Zealand wool - 15% polyamide

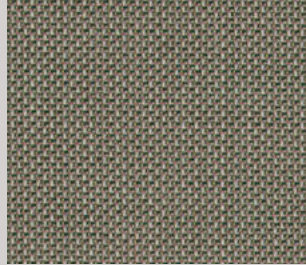
Martindale: 200.000 cycles

Reaction to fire: EN 1021 Part 1-2 (UE), M1 (FR), BS 5852 Crib 5 (UK),
TB 117:2013 (USA)

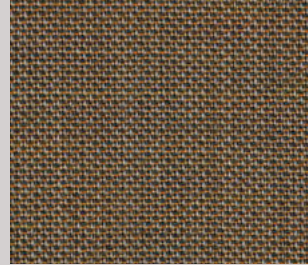
OEKO-TEX®
CONFIDENCE IN TEXTILES
STANDARD 100



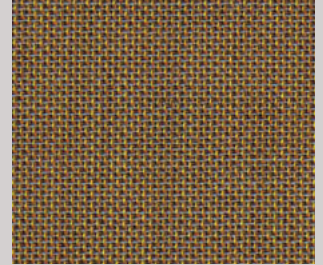
E01/417



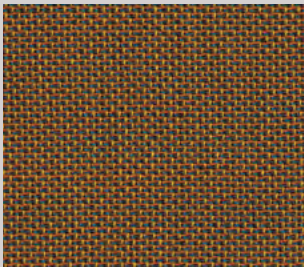
E01/427



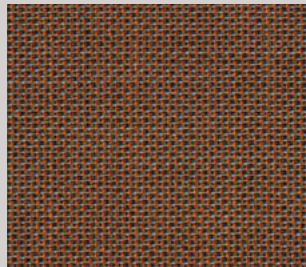
E01/418



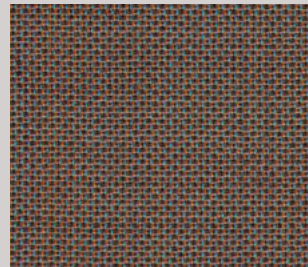
E01/419



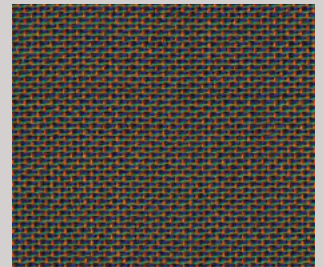
E01/422



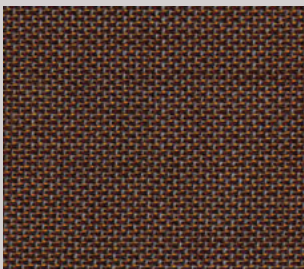
E01/424



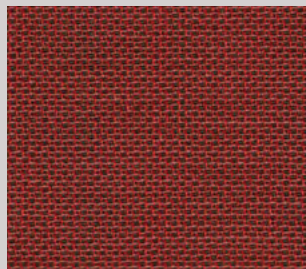
E01/428



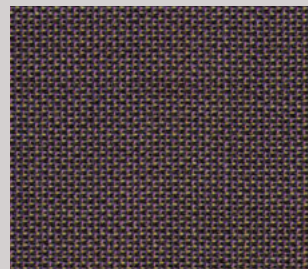
E01/435



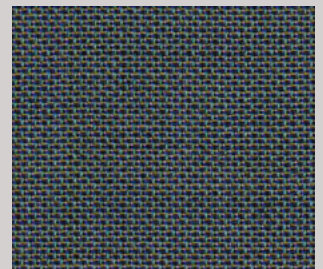
E01/425



E01/423



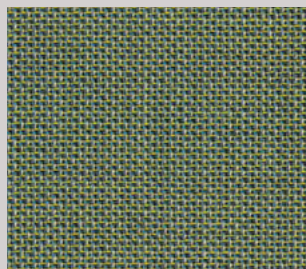
E01/426



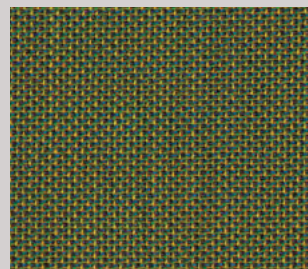
E01/429



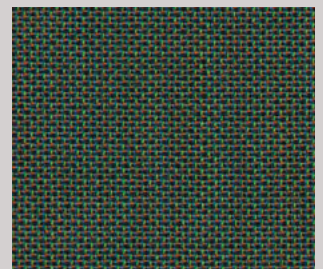
E01/430



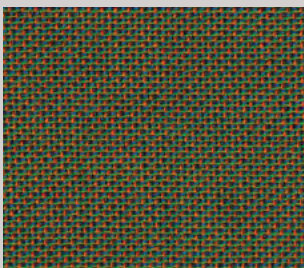
E01/431



E01/432



E01/433



E01/434



E01/421



E01/420

Slight differences between colour batches have to be considered normal

E02

Gabriel

Fabric

85% New Zealand wool - 15% polyamide

Martindale: 200.000 cycles

Reaction to fire: EN 1021 Part 1-2 (UE), M1 (FR), BS 5852 part 1 (UK),

Classe 1 (IT), TB 117:2013 (USA)

OEKO-TEX®
CONFIDENCE IN TEXTILES
STANDARD 100



E02/438



E02/439



E02/440



E02/441



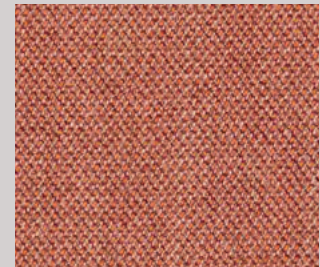
E02/454



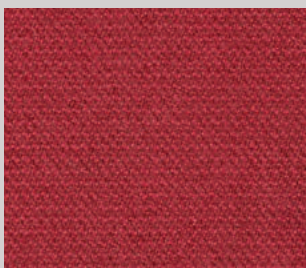
E02/453



E02/442



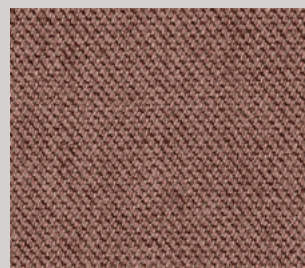
E02/443



E02/444



E02/445



E02/446



E02/447



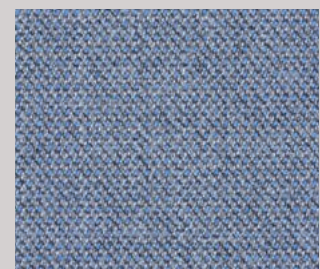
E02/448



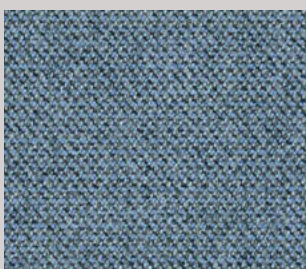
E02/449



E02/450



E02/451



E02/452



E02/436



E02/437

The thread design, the process of waving warp and weft different colored natural fiber yarns might cause localized irregularities that make up the natural appearance of the fabric. Slight differences between colour batches have to be considered normal.

E03

camira

Fabric
75% pure new wool - 25% flax
Wyzenbeek: >100.000 double rubs
Reaction to fire: BS 7176 Low Hazard (UK), TB 117:2013 (USA)



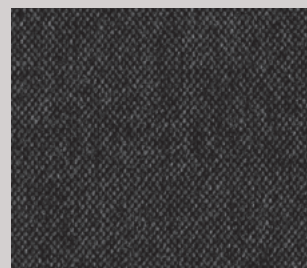
E03/464



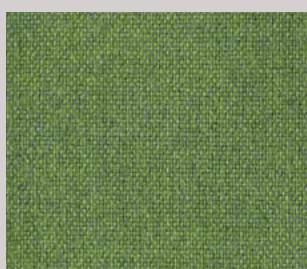
E03/460



E03/463



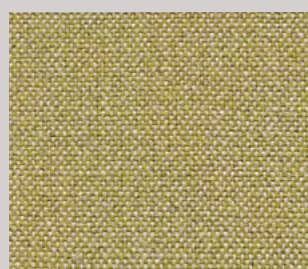
E03/472



E03/470



E03/458



E03/455



E03/462



E03/459



E03/457



E03/456



E03/461



E03/466



E03/471



E03/474



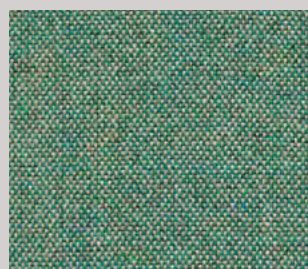
E03/469



E03/468



E03/473



E03/467



E03/465

Slight differences between colour batches have to be considered normal

E04

abitex

Fabric
100% polyester
Martindale: 150.000 cycles
Reaction to fire: EN 1021 Part 1-2 (UE), M1 (FR), BS 5852 Crib 5 (UK),
Classe 1 (IT), TB 117:2013 (USA)



Suggested for Design Living collection



E04/475



E04/480



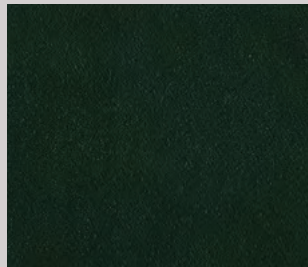
E04/477



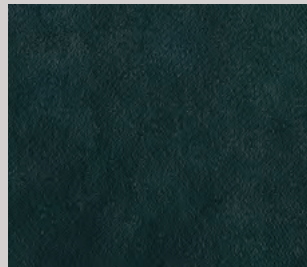
E04/476



E04/481



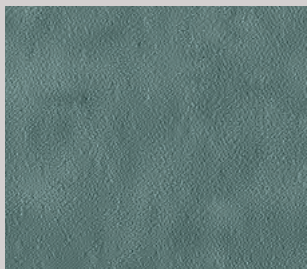
E04/482



E04/483



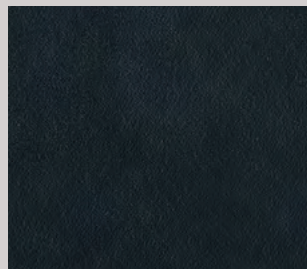
E04/492



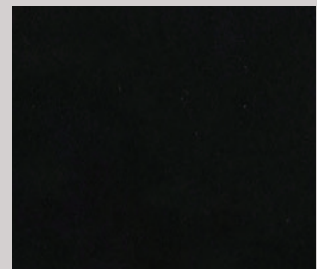
E04/491



E04/484



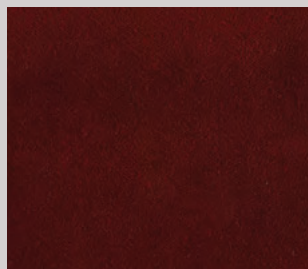
E04/487



E04/485



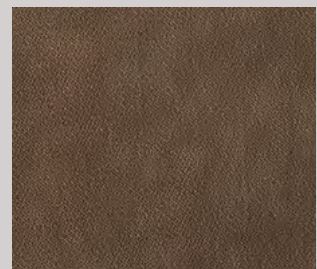
E04/478



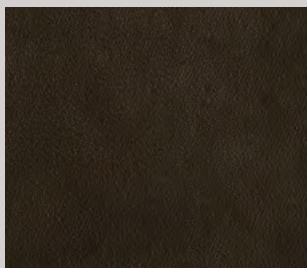
E04/479



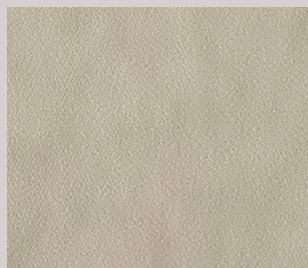
E04/488



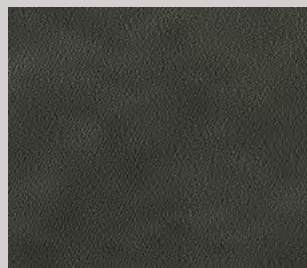
E04/489



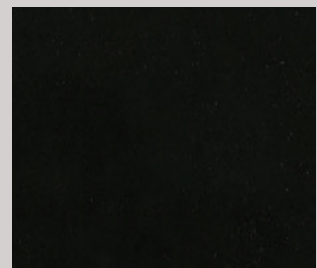
E04/486



E04/490



E04/493



E04/494

Black

Slight differences between colour batches have to be considered normal

I01

RUBELLI

Fabric
100% polyester
Martindale: 50.000 cycles
Reaction to fire: M1 (FR), BS 5851 Part 0-1 (UK), TB 117:2013 (USA),
Classe 1 (IT)

OEKO-TEX®
CONFIDENCE IN TEXTILES
STANDARD 100



I01/515



I01/516



I01/517



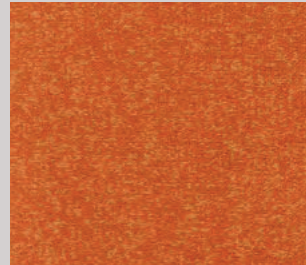
I01/532



I01/524



I01/525



I01/521



I01/530



I01/531



I01/523



I01/529



I01/528



I01/527



I01/526



I01/518



I01/522



I01/520



I01/519

Suggested for Design Living collection

Slight differences between colour batches have to be considered normal

I02

kvadrat

Fabric

92% new wool worsted - 8% nylon

Martindale: 60.000 cycles

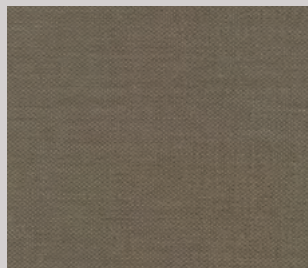
Reaction to fire: BS 5852 Crib 5 (UK), ND D 60 013 (FR), Classe 1 (IT), EN 1021 Part 1-2 (UE), TB 117:2013 (USA)



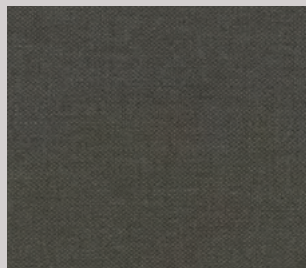
Suggested for Design Living collection



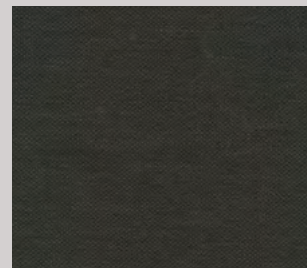
I02/547



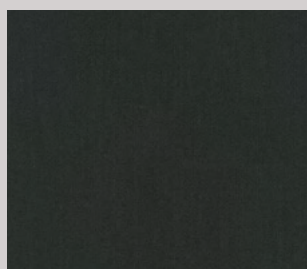
I02/549



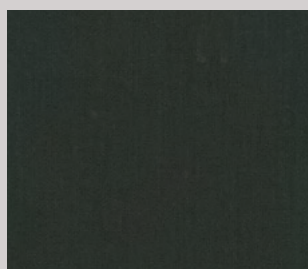
I02/550



I02/552



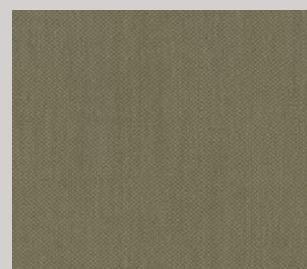
I02/541



I02/542



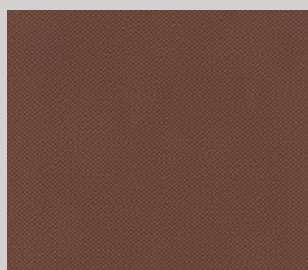
I02/537



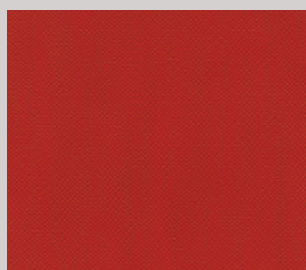
I02/539



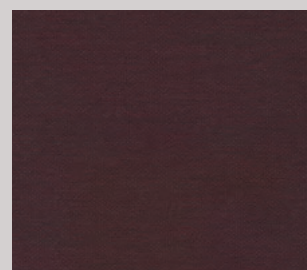
I02/533



I02/543



I02/546



I02/551



I02/545



I02/544



I02/534



I02/535



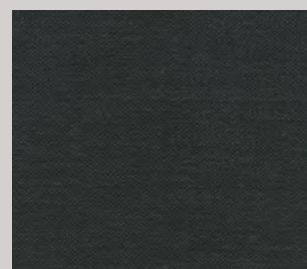
I02/536



I02/548



I02/538



I02/540

Slight differences between colour batches have to be considered normal

M01

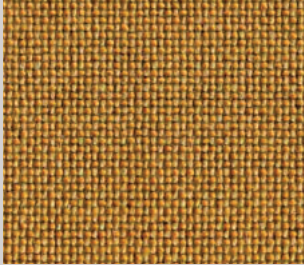
camira

Fabric

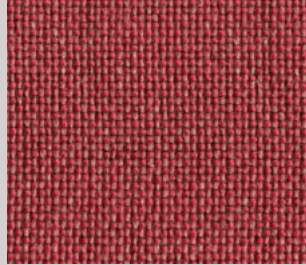
85% wool - 10% flax - 5% nylon

Martindale: > 100.000 cycles

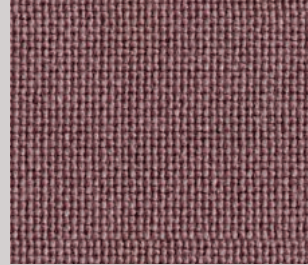
Reaction to fire: BS 7176 Medium Hazard (UK), TB 117:2013 (USA)



M01/559



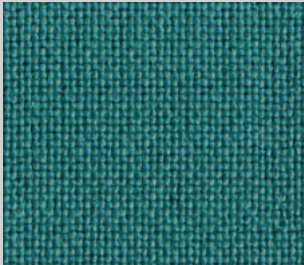
M01/562



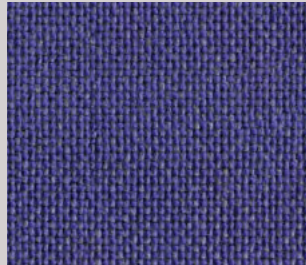
M01/565



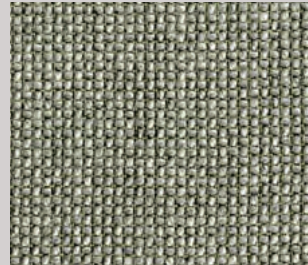
M01/560



M01/563



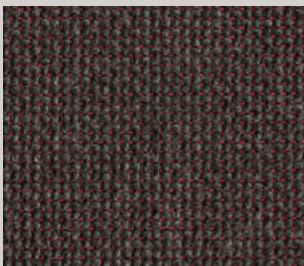
M01/566



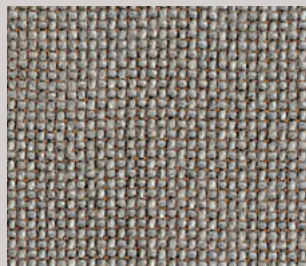
M01/561



M01/564



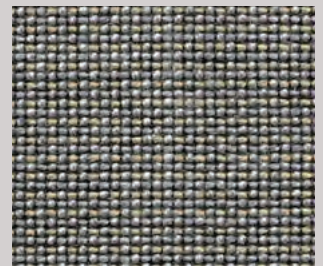
M01/567



M01/553



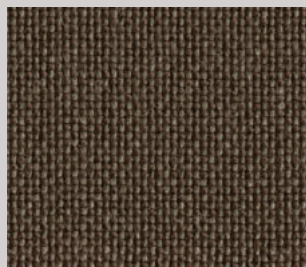
M01/556



M01/554



M01/555



M01/557



M01/558

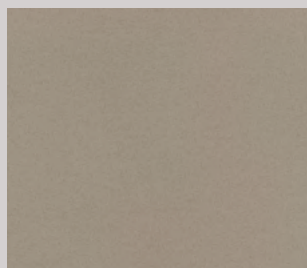
M02

kvadrat

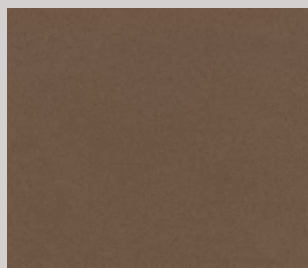
Fabric
100% wool
Martindale: 45.000 cycles
Reaction to fire: BS 5852 Crib 5 (UK), ND D 60 013 (FR), Classe 1 (IT),
EN 1021 Part 1-2 (UE), TB 117:2013 (USA)



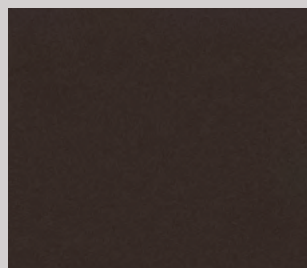
Suggested for Design Living collection



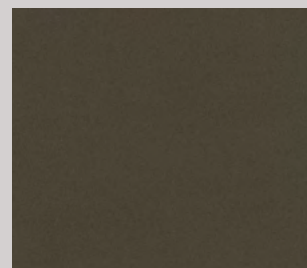
M02/573



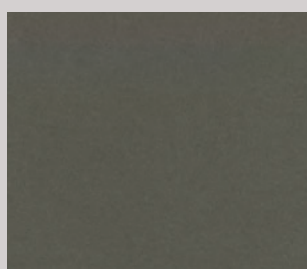
M02/574



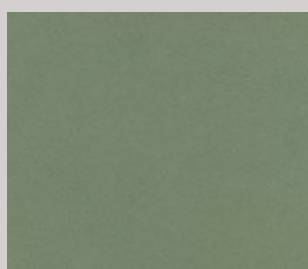
M02/572



M02/583



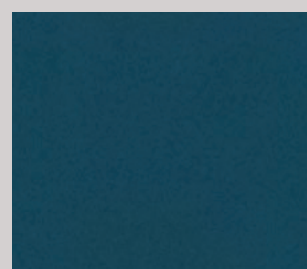
M02/582



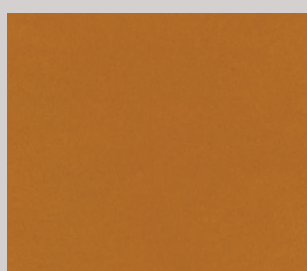
M02/584



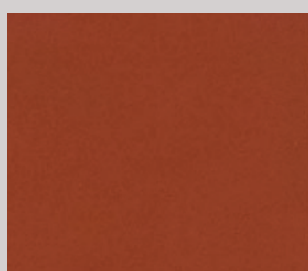
M02/586



M02/587



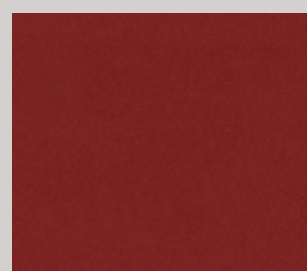
M02/575



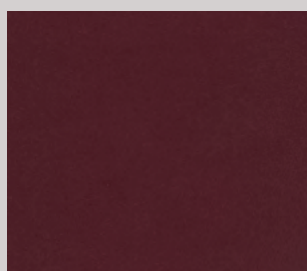
M02/579



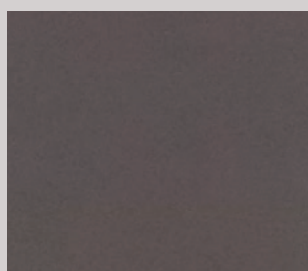
M02/576



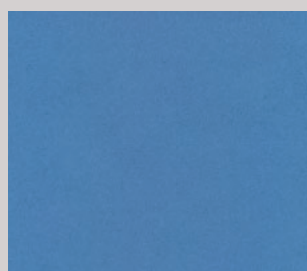
M02/578



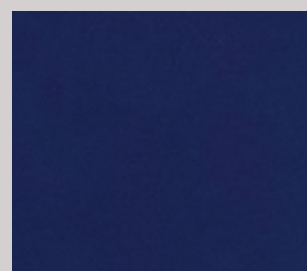
M02/577



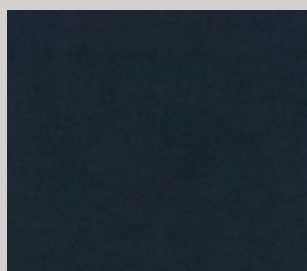
M02/568



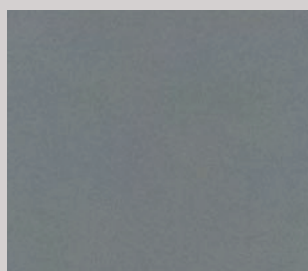
M02/580



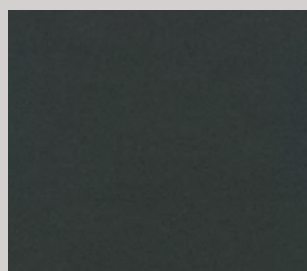
M02/581



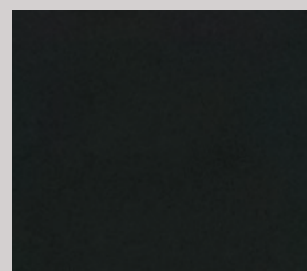
M02/585



M02/569



M02/571



M02/570

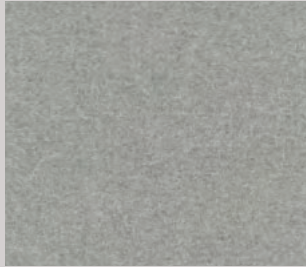
Black

Slight differences between colour batches have to be considered normal

M03

kvadrat

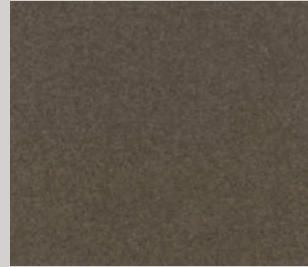
Fabric
100% wool
Martindale: 45.000 cycles
Reaction to fire: BS 5852 Crib 5 (UK), ND D 60 013 (FR), Classe 1 (IT),
EN 1021 Part 1-2 (UE), TB 117:2013 (USA)



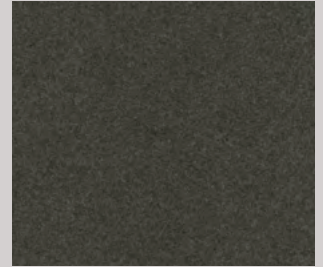
M03/589



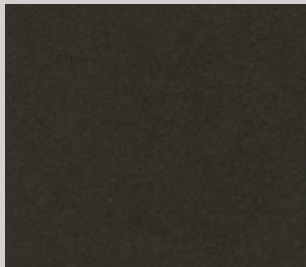
M03/588



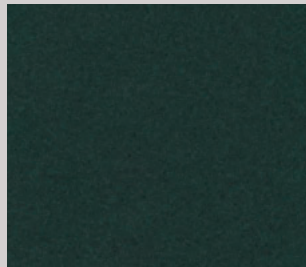
M03/602



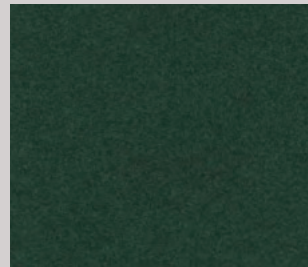
M03/603



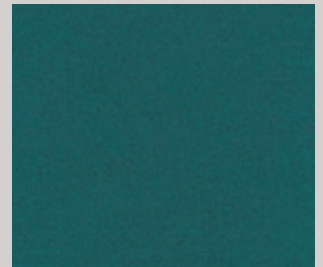
M03/604



M03/597



M03/600



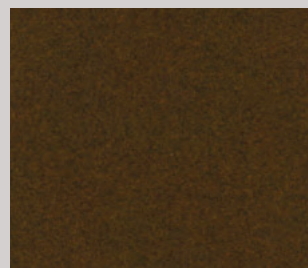
M03/596



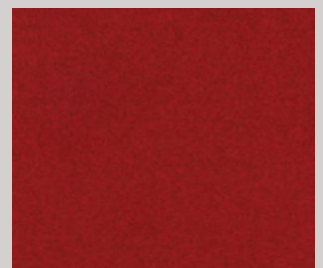
M03/601



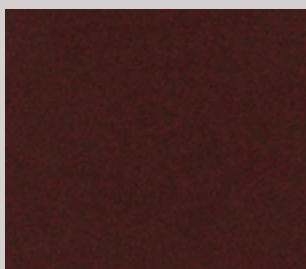
M03/593



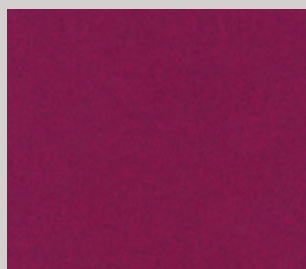
M03/594



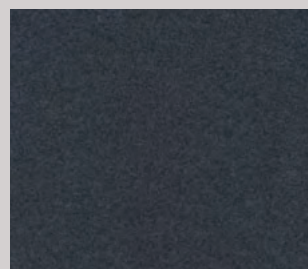
M03/606



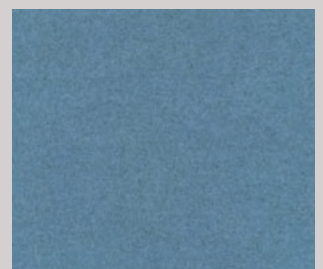
M03/607



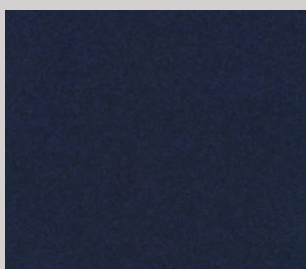
M03/605



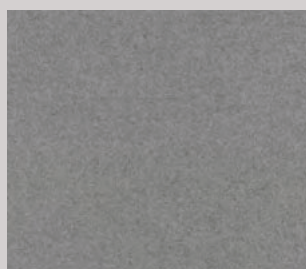
M03/595



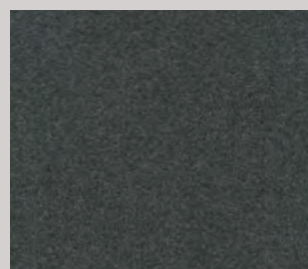
M03/598



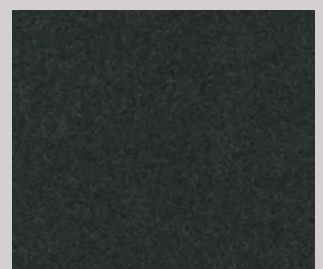
M03/599



M03/590



M03/591



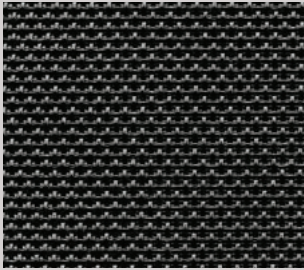
M03/592

Suggested for Design Living collection

Slight differences between colour batches have to be considered normal

R02

Dekora mesh
70% polyvinyl
30% polyester



R02/101



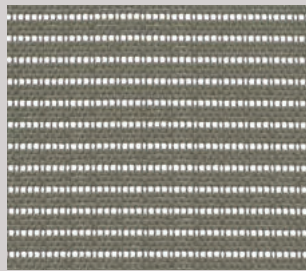
R02/102

R05

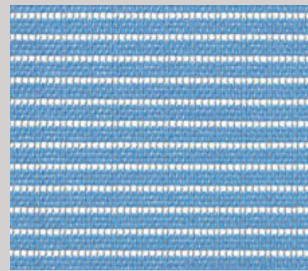
Dinamica mesh
30% polyester
70% elastomerized nylon



R05/148



R05/150



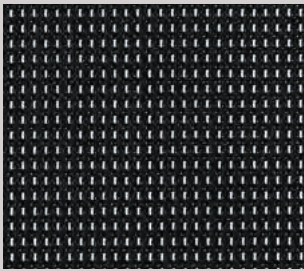
R05/151



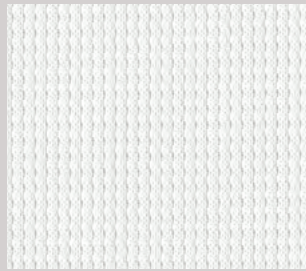
R05/153

R06

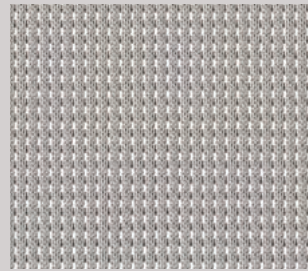
Oxygen & Omnia mesh
100% polyester



R06/229



R06/230

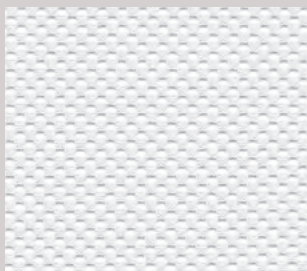


R06/231

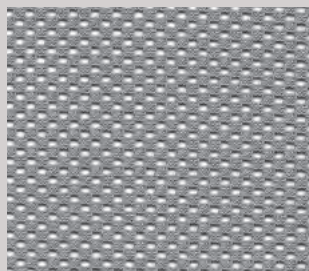
Slight differences between colour batches have to be considered normal

R07

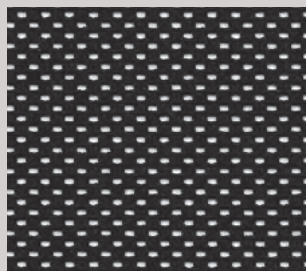
Okay mesh
100% polyester



R07/253



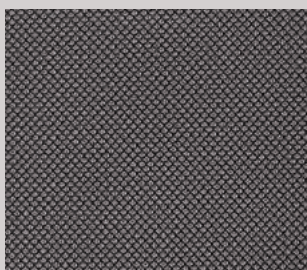
R07/251



R07/250

R09

Diade Rock mesh
100% polyester



R09/360



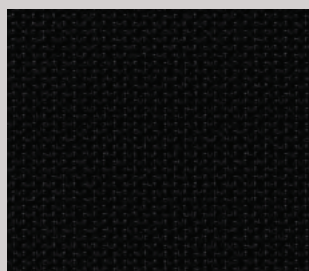
R09/361

R10

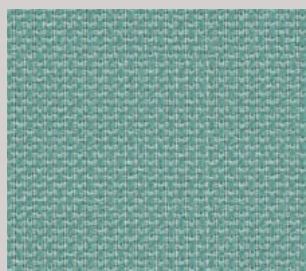
Ode mesh
68% polyester
32% polyamid



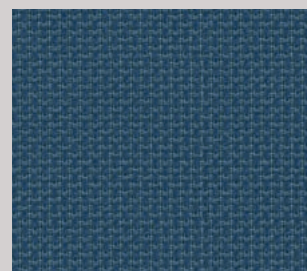
R10/622



R10/623

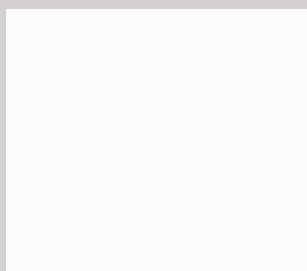


R10/624

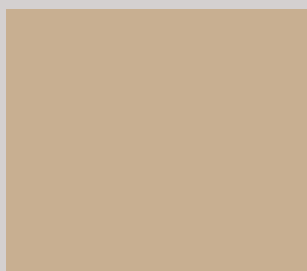


R10/625

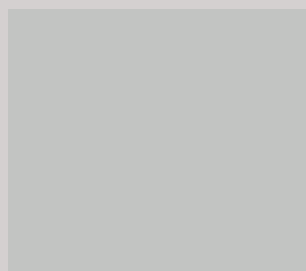
Polymers



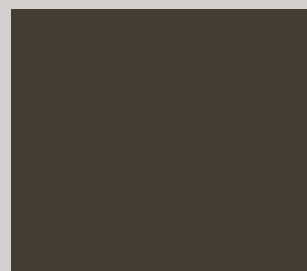
BA White



BG Beige



GR Grey



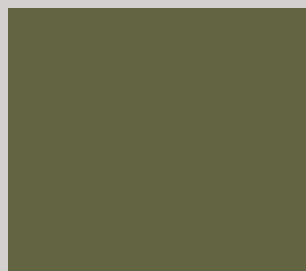
GO Umbra Grey



OC Ocher



AB Burnt Orange



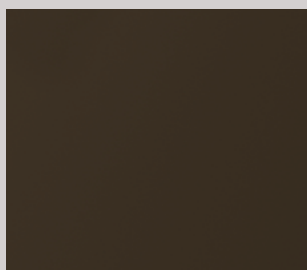
VD Olive Green



BT Cobalt Blue



TM Dark Brown



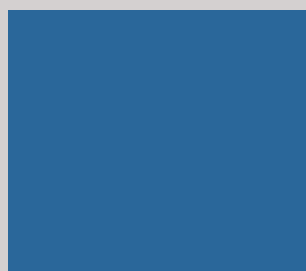
RN Bronze



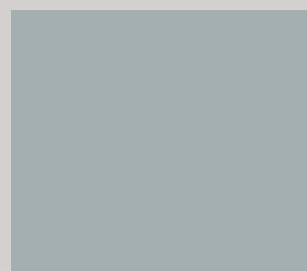
OZ Ocher Cell



RZ Red Cell



LZ Blue Cell



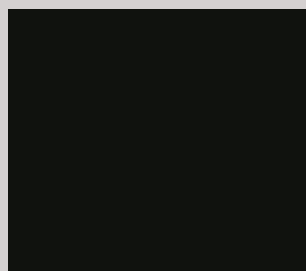
IZ Grey Cell



RY Red Close



IY Grey Close



NR Black

Suggested for Design Living collection



Slight differences between colour batches have to be considered normal

ITALIER



www.italier.cz | info@italier.cz | +420 774 431 196