

VZORNÍK ARREDOCLASSIC

ITALIER

# VZORNÍK

## KATEGORIE A

SATEN DESIGN, STRIPE, PARIGI 6  
FANTASIA  
BALTIMORA 7

## KATEGORIE B

SANTA PAOLA, ALICANTE, CALP 9  
PARSIFAL 10  
CHINTILLY, HENRIETTE SIENA, 11  
THAR SOFT PALERMO 12  
13

## KATEGORIE B

PRESTIGE, VIKY 14  
NASHVILLE, EMPORIA, 15  
RITZ, DENON  
VEGA, AZIMUT, JODHPUR, 16  
ASSISI, TIZIANO,  
MELODIA, WINSOR  
MELODIA, DOLCEVITA, 17  
MODIGLIANI, FANTASIA

## KATEGORIE C

PELLE 19

## KATEGORIE E

CARROUSEL 21  
CHIC 22  
MOLIERE, RIGA, NEWYORK, 23  
BOISE, SANDIEGO

## MATERIÁLY

MATERIÁLY 25

# ČALOUNĚNÍ

# SLOŽENÍ LÁTEK

## Kód

<b>WO</b>	Vlna	Wool
<b>WP</b>	Alpaka	Alpaca
<b>WL</b>	Lama	Lama
<b>WK</b>	Velbloud	Camel
<b>WS</b>	Kašmír	Kashmir
<b>WM</b>	Mohér	Mohair
<b>WA</b>	Angora	Angora
<b>WG</b>	Vikuně	Vicuna
<b>WY</b>	Jak	Yak
<b>WU</b>		Guanaco
<b>WB</b>	Bobr	Beaver
<b>WT</b>	Vydra	Otter
<b>HA</b>	Srst	Hair
<b>SE</b>	Hedvábí	Silk
<b>CO</b>	Bavlna	Cotton
<b>KP</b>	Kapok	Kapok
<b>LI</b>	Len	Flax
<b>CA</b>	Pravé konopí	True hemp
<b>JU</b>	Juta	Jute
<b>AB</b>	Abaka	Abaca (Manila hemp)
<b>AL</b>	Alfa	Alfa
<b>CC</b>	Kokosové vlákno	Coir (coconut)
<b>GI</b>	Janovec	Broom
<b>RY</b>	Hedvábí	Rayon
<b>PES</b>	Polyester	Polyester
<b>PVC</b>	Polyvinilchlorid	Polyvinylchloride

## Kód

<b>KE</b>	Kenaf	Kenaf (Hibiscus hemp)
<b>RA</b>	Ramie	Ramie
<b>SI</b>	Sisal	Sisal
<b>SN</b>		Sun
<b>HE</b>		Henequen
<b>MG</b>		Maguey
<b>AC</b>	Acetát	Acetate
<b>AG</b>	Alginát	Alginate
<b>CU</b>	Měď	Cupro
<b>MD</b>		Modal
<b>PR</b>		Protein
<b>TA</b>	Triacetát	Triacetate
<b>VI</b>	Viskóza	Viscose
<b>PC</b>	Akryl	Acrylic
<b>CL</b>	Chlorovlákn	Chlorofibre
<b>FL</b>	Fluorovlákn	Fluorofibre
<b>MA</b>	Modakryl	Modacrylic
<b>PA</b>		Nylon
<b>PL</b>		Polyester
<b>PE</b>	Polyethylen	Polyethylene
<b>PP</b>	Polypropylen	Polypropylene
<b>PB</b>	Polykarbamid	Polycarbamide
<b>PU</b>	Polyuretan	Polyurethane

## Kód

<b>VY</b>	Vynylal	Vynylal
<b>TV</b>		Trivynyl
<b>EL</b>	Guma	Elastodiene
<b>EA</b>	Elastan	Elastane
<b>GL</b>	Skleněné vlákno	Glass fibre
<b>ME</b>	Kov	Metal
	Kovový	Metallic
	Pokovené	Metallised
<b>AS</b>	Azbest	Asbestos
<b>PI</b>	Papír	Paper

## SPECIFICKÉ OZNAČENÍ

<b>IWS</b>	Čistá střížní vlna	Pure virgin wool
<b>WV</b>	Ovčí vlna	Fleece wool
<b>AF</b>	Jiná vlákna	Other fibres
<b>HL</b>		Cotton linen Union
<b>TR</b>	Zbytky textilu	Textile residues
	nebo neurčené složení	or unspecified composition
<b>TS</b>	Laminovaná tkanina	Laminated cloth
<b>SC</b>	Syntetický	Synthetic

Zobrazené barvy látek a materiálů jsou pouze orientační, barevné odlišnosti mohou nastat rozdílným zobrazením monitorů, tisku či focením.

# KATEGORIE A

---

Kat. A



**SATEN DESIGN L328 2202**  
28%VI, 72%PL, weight 480 g/ml



**STRIPE L328 K1 2202**  
72%PL, 28%VI, weight 480 g/ml



**FANTASIA Ramage**  
80%PL, 20%VI, weight 480 g/ml



**PARIGI RAMAGE ORO**  
45%PL, 55%VI, weight 420 g/ml

---

Kat. A



**BALTIMORA Damasco X390 03**  
100%PL, weight 840 g/ml



**BALTIMORA Unito X 393 03**  
100%PL, weight 840 g/ml



**BALTIMORA Riga X 391 03**  
100%PL, weight 840 g/ml



**BALTIMORA Damasco X390-02**  
100%PL, weight 840 g/ml



**BALTIMORA Unito 393 02**  
100%PL, weight 840 g/ml



**BALTIMORA RIGA X391 02**  
100%PL, weight 840 g/ml

# KATEGORIE B



---

Kat. B



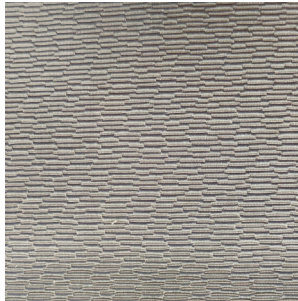
**SANTA PAOLA L 1697 - 02**  
100%PL,weight 480 g/ml



**ALICANTE L 1696 - 03**  
95%PL,5%MET,weight 510 g/ml



**CALP L 1698 - 03**  
100%PL,weight 400 g/ml



**SANTA PAOLA L 1697 - 03**  
100%PL,weight 480 g/ml



**ALICANTE L 1696 - 02**  
95%PL,5%MET, weight 510 g/ml



**CALP L 1698 - 02**  
100%PL,weight 400 g/ml



**SANTA PAOLA L 1697 - 01**  
100%PL,weight 480 g/ml



**ALICANTE L 1696 - 01**  
95%PL,5% MET, weight 510 g/ml



**CALP L 1698 - 01**  
100%PL,weight 400 g/ml

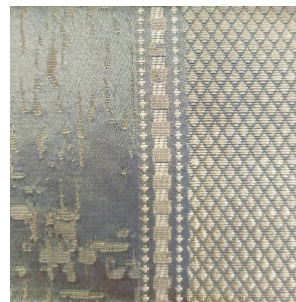
## Kat. B



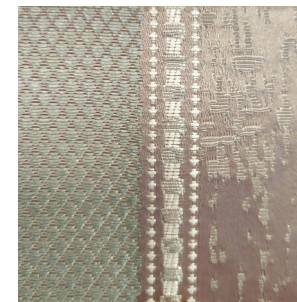
**PARSIFAL Fiore 108**  
100%PES, weight 480 g/ml



**PARSIFAL Riga 206**  
100%PES,weight 480 g/ml



**PARSIFAL Riga 209**  
100%PES,weight 480 g/ml



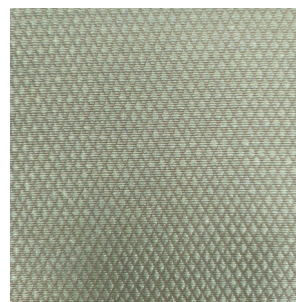
**PARSIFAL Riga 208**  
100%PES,weight 480 g/ml



**PARSIFAL Fiore 109**  
100%PES, weight 480 g/ml



**PARSIFAL Riso 306**  
100%PES, weight 480 g/ml



**PARSIFAL Riso 309**  
100%PES, weight 480 g/ml



**PARSIFAL Riso 308**  
100%PES, weight 480 g/ml



**PARSIFAL Fiore 106**  
100%PES, weight 480 g/ml



**PARSIFAL Unito 6**  
100%PES,weight 480 g/ml



**PARSIFAL Unito 9**  
100%PES,weight 480 g/ml



**PARSIFAL UNITO 8**  
100%PES, weight 480 g/ml

---

Kat. B



**HENRIETTE L1393 02**  
81%PES, 19%VI, weight 560 g/ml



**CHANTILLY L1366 02**  
100%PL, weight 620 g/ml



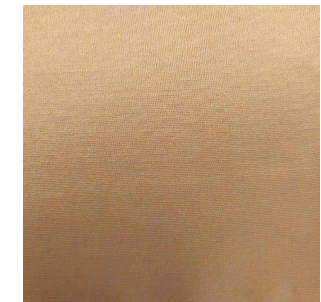
**CHANTILLY L1382 22**  
63%CO, 37%PL, weight 470 g/ml



**HENRIETTE L1393 09**  
81%PES, 19%VI, weight 560 g/ml



**CHANTILLY L1382 0433**  
100%PL, weight 620 g/ml



**CHANTILLY L1382 18**  
100%PL, weight 620 g/ml



**HENRIETTE L 1393 40**  
81%PES, 19%VI, weight 560 g/ml



**CHANTILLY L1382-8Y2**  
100%PL, weight 620 g/ml



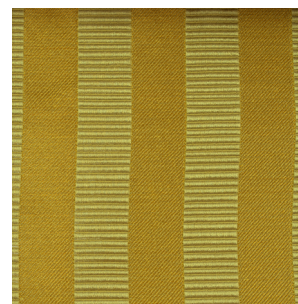
**CHANTILLY L1366 06**  
100%PL, weight 620 g/ml

---

Kat. B



**SIENA UNITO LUX F692 03**  
63%PL,4%VI,33%CO,weight 505 g/ml



**SIENA Riga F691/03**  
48%PL,3%VI,49%CO weight 665 g/ml



**SIENA Riga F691/06**  
48%PL,3%VI,49%CO weight 665 g/ml



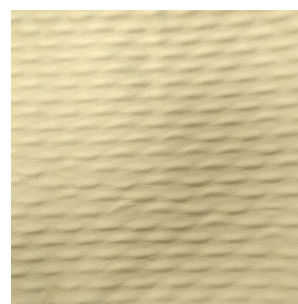
**SIENA UNITO LUX F692 06**  
63%PL,4%VI,33%CO,weight 505 g/ml



**SIENA RAMAGE F688 06**  
48%PL,3%VI,49%CO, weight 665 g/ml



**SIENA RAMAGE F688 03**  
48%PL,3%VI,49%CO, weight 665 g/ml



**THAR L 1453/01**  
100%PET, weight 630 g/ml



**SIENA Un Riga F689/06**  
48%PL,3%VI,49%CO weight 665 g/ml

---

Kat. B



**SOFT Riga F743/02**  
100%PL, weight 500 g/ml



**SOFT Coord. F744/02**  
100%PL, weight 500 g/ml



**SOFT Damasco F741/02**  
100%PL, weight 500 g/ml



**SOFT Unito F745/02**  
100%PL, weight 430 g/ml



**SOFT Riga F743/03**  
100%PL, weight 500 g/ml



**SOFT Coord. F744/03**  
100%PL, weight 500 g/ml



**SOFT Damasco F741/03**  
100%PL, weight 500 g/ml



**SOFT Unito F745/03**  
100%PL, weight 430 g/ml



**PALERMO Unito T2480 16**  
59%PL,41%VI weight 500 g/ml



**PALERMO Damasco T2479 16**  
59%PL,41%VI weight 500 g/ml

---

Kat. B



**PRESTIGE Ramage Champagne**  
36%PL,38%LI, 26% RAYON weight 346 g/ml



**VIKY 7 Unito Champagne**  
100%PL weight 370 g/ml



**PRESTIGE Unito Champagne**  
29%PL,46%CO, 25%RAYON, weight 346 g/ml



**PRESTIGE Ramage Bronzo**  
36%PL,38%LI, 26%RAYON weight 346 g/ml



**VIKY 7 Unito Bronzo**  
100%PL weight 370 g/ml



**PRESTIGE Unito Bronzo**  
29%PL,46%CO, 25%RAYON, weight 346 g/ml

---

Kat. B



**NASCHVILLE UNITO L340-K5 01**  
50%VI, 21%CO,29%PL, weight 660 g/ml



**EMPORIA DAMASK 5674**  
100%PL, weight 600 g/ml



**EMPORIA DAMASK 4464**  
100%PL, weight 600 g/ml



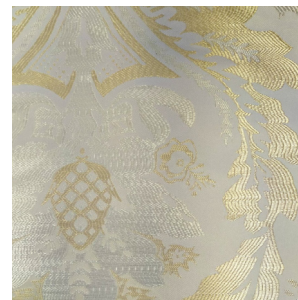
**NASCHVILLE Fiorato L340 01**  
37%VI, 36%PL, weight 880 g/ml



**RITZ Unito 9986**  
100%PL, weight 170 g/ml



**EMPORIA Plain 64**  
100%PL, weight 420 g/ml



**DENON DAMASCO 9981**  
100%PL, weight 370 g/ml



**EMPORIA Plain 44**  
100%PL, weight 420 g/ml

---

Kat. B



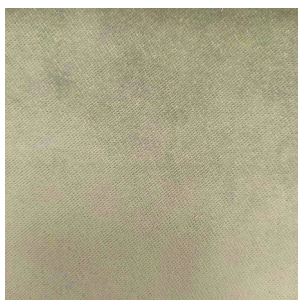
**VEGA col 103**  
100%PL, weight 552 g/ml



**JODHPUR L1452 02**  
100%PES, weight 360 g/ml



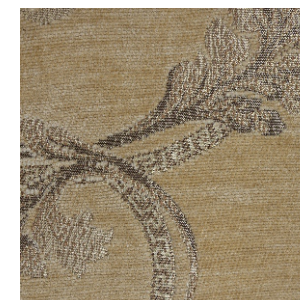
**TIZIANO Riga**  
100%PL, weight 700 g/ml



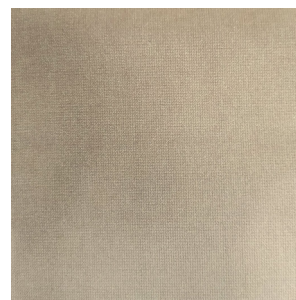
**VEGA Unito 147**  
100%PL, weight 552 g/ml



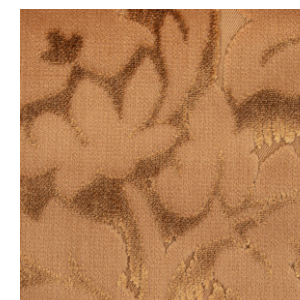
**ASSISI RAMAGE L 1558 01**  
45%PL, 20%CO, 7%PC, weight 552 g/ml



**WINSOR F075 01**  
44%PL, 56%ACR, weight 580 g/ml



**AZIMUT Unito 903**  
92%PES, 5%CO, 3%LA, weight 700 g/ml



**MELODIA Damasco ORO**  
100%PL, weight 780 g/ml



---

Kat. B



SINFONIA  
upholstered bed  
Moliere M04



MELODIA  
upholstered headboard  
Art 7608 LZ1



MODIGLIANI - MELODIA  
office armchair  
Art 9268 IC1



SINFONIA CN1  
upholstered bed  
Art 1382/22



FANTASIA  
upholstered headboard  
Amsterdam 54 AE4



MODIGLIANI  
upholstered bed  
Santa Paola IT3



DOLCEVITA  
upholstered headboard  
Zeph 01 ZP1



MODIGLIANI  
upholstered bed  
Allicante IT2

# KATEGORIE C

---

## Kat. C

Pravá kůže 1 mm



PELLE 129-V01



PELLE 332-201



PELLE 699-022



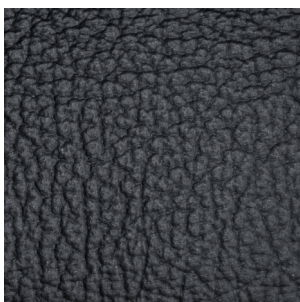
PELLE 305-107



PELLE 367-203



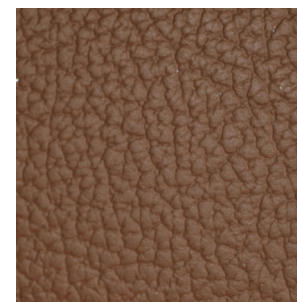
PELLE 384-109



PELLE NERO 250



PELLE 358-325



PELLE 308-233

KATEGORIE

---

Kat. E



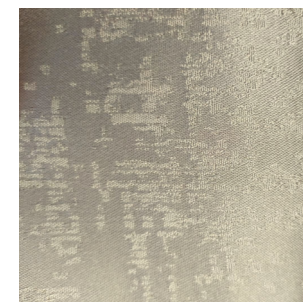
**CARROUSEL Damasco 9723**  
50%PL,30%VI,20%AC,weight 530 g/ml



**CARROUSEL Damasco 9725**  
50%PL,30%VI,20%AC,weight 530 g/ml



**CARROUSEL Fondo 9728**  
70%PL,30%VI,weight 530 g/ml



**CARROUSEL Fondo 9730**  
30 VI70%PL,weight 530 g/ml



**CARROUSEL Unito 9988**  
100%PL,weight 370g/ml



**CARROUSEL Unito 9990**  
100%PL,weight 370 g/ml

---

Kat. E



**CHIC ROMBO 10062**  
82%PES,18%LI,weight 460 g/ml



**CHIC ROMBO 10064**  
82%PES,18%LI,weight 460 g/ml



**CHIC 10042**  
80%PES,20%LI,weight 460 g/ml



**CHIC 10044**  
80%PES,20%LI,weight 460 g/ml



**CHIC Unito 10052**  
80%PES,20%LI,weight 460 g/ml



**CHIC Unito 10054**  
80%PES,20%LI,weight 460 g/ml

---

Kat. E



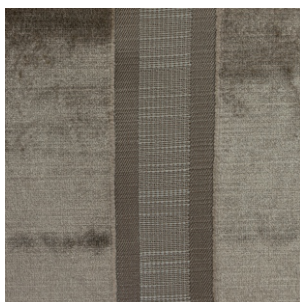
**MOLIERE Riga 5514**  
50%PC,30%VI,20%PL,weight 700 g/ml



**MOLIERE Unito**  
50%PC,30%VI,20%PL,weight 790 g/ml



**MOLIERE Damasco 5512**  
50%PC,30%VI,20%PL,weight 700 g/ml



**RIGA F748/03**  
25%PC,35%CO,40%VI,weight 550 g/ml



**F498/10**  
72%VI,15%PL,13%CO,weight 728 g/ml



**NEW YORK Damasco F747/03**  
25%PL,35%CO,40%VI,weight 550 g/ml



**BOISE Unito X139/01**  
29%CO,46%PES,25%RAYON,weight 720 g/m



**SANDIEGO Unito F362/13**  
52%AC,41%PL,7%VI,weight 511 g/ml



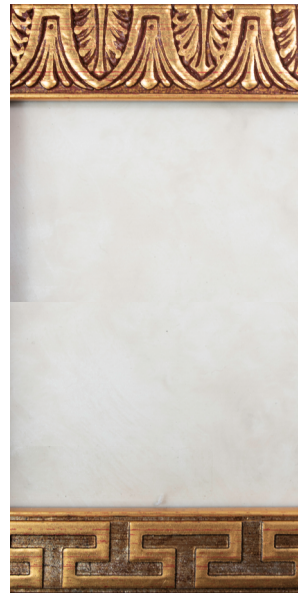
**SANDIEGO Damasco X168/01**  
54%PL,42%VI,4%METALO,weight 1288 g/ml

# MATERIÁL

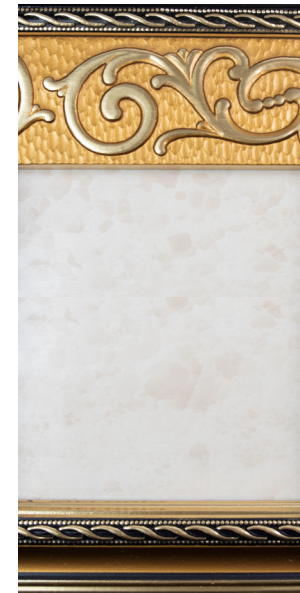


---

Kat. MATERIÁLY



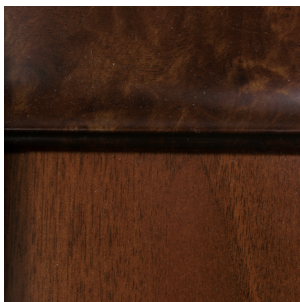
LEONARDO



MELODA

---

## Kat. MATERIÁLY



DONATELLO



SINFONIA



RAFFAELLO/GIOTTO



DOLCE VITA



LIBERTY



TIZIANO



FANTASIA



**ITALIER**

---

**FABRICS  
SELECTION**

*ČALOUNICKÉ LÁTKY*



1 Art. Selma Damasco X263/01 - SL1

2 Art. Selma Unito X265/01 - SL3

3 Art. Selma Riga X264/01 - SL2



1 Art. Selma Damasco X263/02 - SL4

2 Art. Selma Unito X265/02 - SL6

3 Art. Selma Riga X264/02 - SL5



1 Art. Parigi Fascia Oro - PRE

2 Art. Parigi Unito Oro - PRF

3 Art. Parigi Ramage Oro - PRD



1 Art. L328 Saten Design 2202 - SC1

2 Art. L328 K1Stripe 2202 - SC2

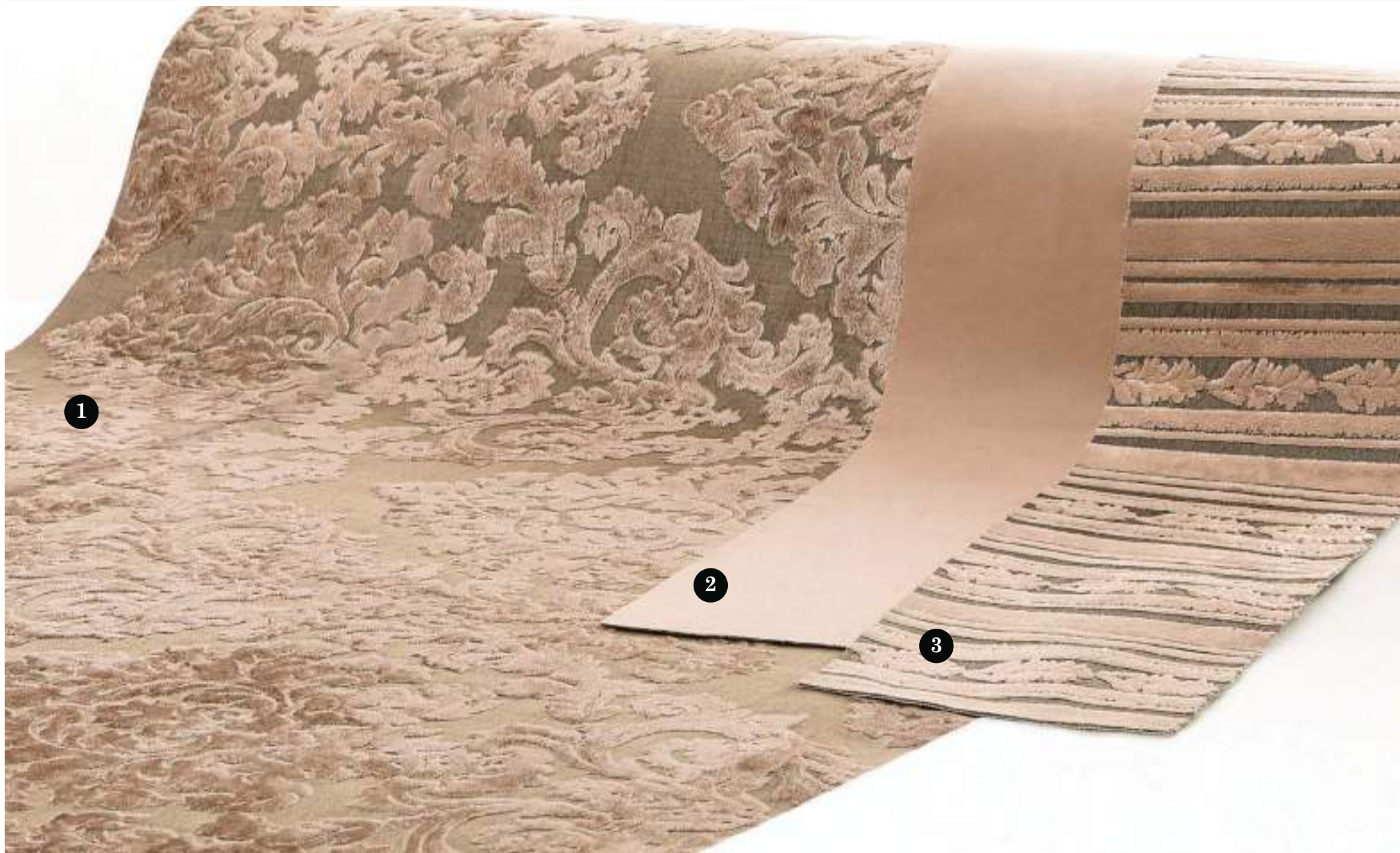




1 Art. Baltimora Damasco X390/02 - BC1

2 Art. Baltimora Riga X391/02 - BC2

3 Art. Baltimora Unito X393 02 - BC5



1 Art. Baltimora Damasco X390/03 - BC3    2 Art. Baltimora Unito X393/03 - BC6    3 Art. Baltimora Riga X391/03 - BC4



1 Art. Anniston Damasco F967/07 - AI1

2 Art. Anniston Unito F970/07 - AI3

3 Art. Anniston Riga F969/07 - AI2



1 Art. Jodhpur L1452/02 - JO1

2 Art. Chantilly L1366/06 - CN2

3 Art. Thar L1453/01 - TH1



1 Art. Jodhpur L1452/06 - JO2

2 Art. Chantilly L1382/25 - CN9

3 Art. Chantilly L1366/08 - CN8



1 Art. Henriette L1393/09 - HE1

2 Art. Chantilly L1366/06 - CN2

3 Art. Chantilly L1382/22 - CN1

4 Art. Chantilly L 1382/18 - CN3



1 Art. Henriette L1391/35 - HE4

2 Art. Chantilly L1366/50 - CN4

3 Art. Henriette L1392/35 - HE5



1 Art. Siena Ramage F688/06 - SND

2 Art. Siena Un. Lux F692/06 - SNF

3 Art. Siena Riga F691/06 - LIB

4 Art. Siena Un. Riga F689/06 - SNE





1 Art.Siena Ramage F688/03 - SN1

2 Art.Siena Un. Lux F692/03 - SN3

3 Art.Siena Riga F691/03 - SN4

4 Art.Siena Un. Riga F689/06 - SNE



1 Art. Winsor F075/01 - WI3

2 Art. Winsor F107/01 - WI4

3 Art. Winsor F073/01 - WI2



1 Art. Soft Damasco F741/02 - PS1

2 Art. Soft Unito F745/02 - PS4

3 Art. Soft Coord. F744/02 - PS9

4 Art. Soft Riga F743/02 - PS3



1 Art. Soft Damasco F741/03 - PS5

2 Art. Soft Coord. F744/03 - PSA

3 Art. Soft Unito F745/03 - PS8

4 Art. Soft Riga F743/03 - PS7



- 1 Art. Los Angeles Ramage F931/01 - LA8    2 Art. Los Angeles Coord. F930/01 - LAC    3 Art. Los Angeles Riga F932/01 - LA9  
4 Art. Los Angeles Unito F934/01 - LAB



1 Art. Andora Damasco Tortora - IZ1

2 Art. Tiffany Unito 225 - TY1



1 Art. Sepia Damasco 130002 - SB1

2 Art. Kula Plain Unito - SB2



1 Art. Denver Damasco X041/03 - DN5

2 Art. Denver Riga X040/03 - DN6

3 Art. Los Angeles Unito F934/01 - LAB





1 Art. Palermo Damasco T2479/16 - P21

2 Art. Palermo Unito T2480/16 - P22

3 Art. Vega Col.103 - VG1



1 Art. Prestige Ramage Champagne - PC1

2 Art. Viky 3 Unito Champagne - PC4

3 Art. Prestige Unito Champagne - PC2



1 Art. Prestige Ramage Bronzo - PC5

2 Art. Viky 7 Unito Bronzo - PC7

3 Art. Prestige Unito Bronzo - PC6



1 Art. Assisi Ramage L1558 01 - AB1



1 Art. Henriette L1393 Col.40 - HE8

2 Art. Chantilly L1366 Col. 02 - CN6

3 Art. Vega Col.103 - VG1



1 Art.Moliere Damasco 5512 - MO1

2 Art.Moliere Unito - MO4

3 Art.Moliere Riga 5514 - MO2



1 Art. New York Damasco F747/03 - NY5

2 Art. F498/10 - NY7

3 Art. Riga F748/03 - NY6



1 Art. SanDiego Damasco X168/01 - SD1

2 Art. Boise Unito X139/01 - BI2





1 Art. SanDiego Damasco X168/02 - SD8

2 Art. SanDiego Unito F362/13 - SD7

3 Art. SanDiego Unito F362/05 - SD9

4 Art. SanDiego Unito X300/06 - SDA



1 Art. Sinfonia Fiore V-379 - SI1

2 Art. Sinfonia Unito V-379 - SI2



1 Art. Sinfonia Fiore V-568 - SI3

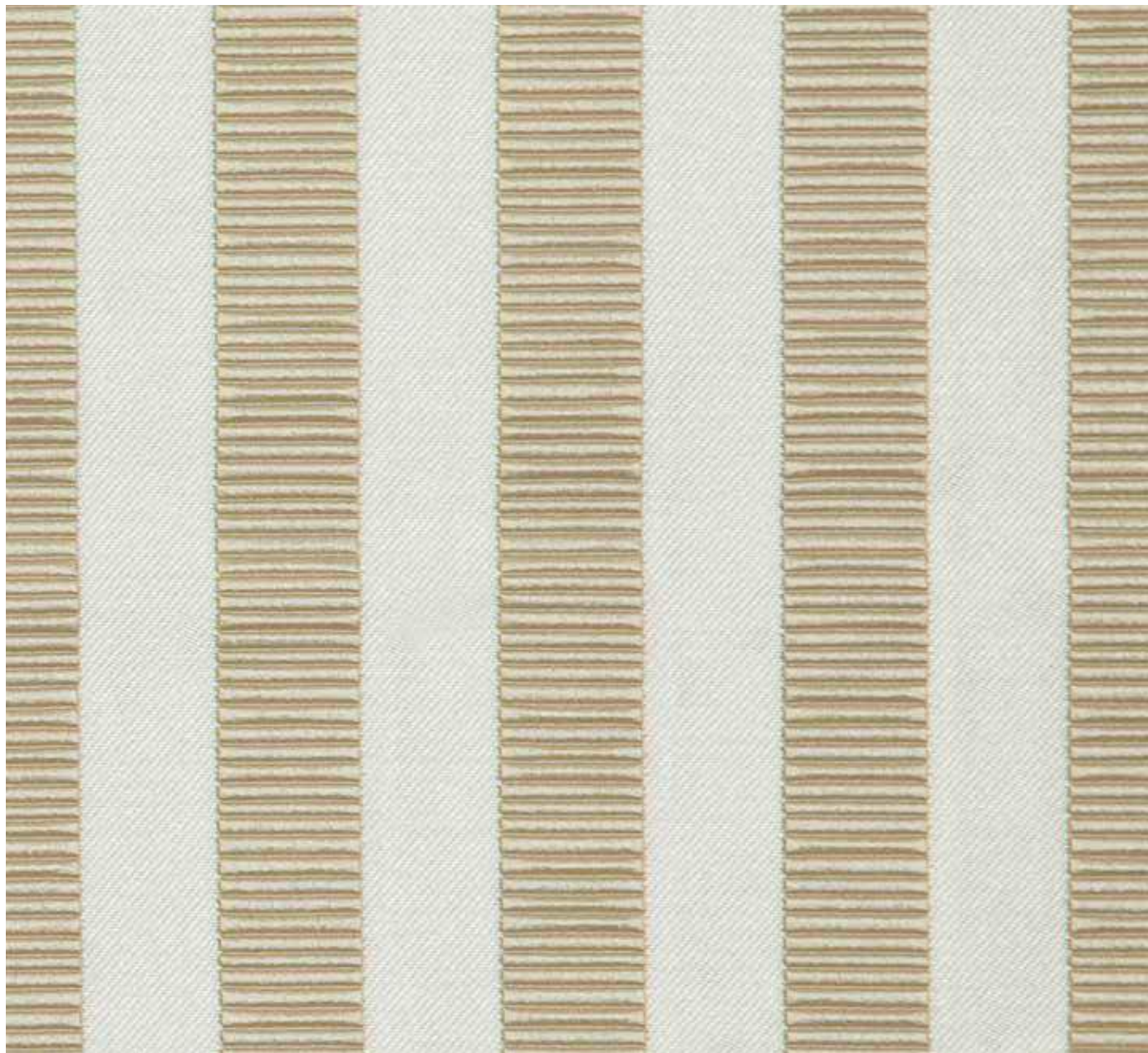
2 Art. Sinfonia Unito V-568 - SI4

*ČALOUNĚNÉ ŽIDLE*



Cat. A / Art. Raffaello 280 - RFL

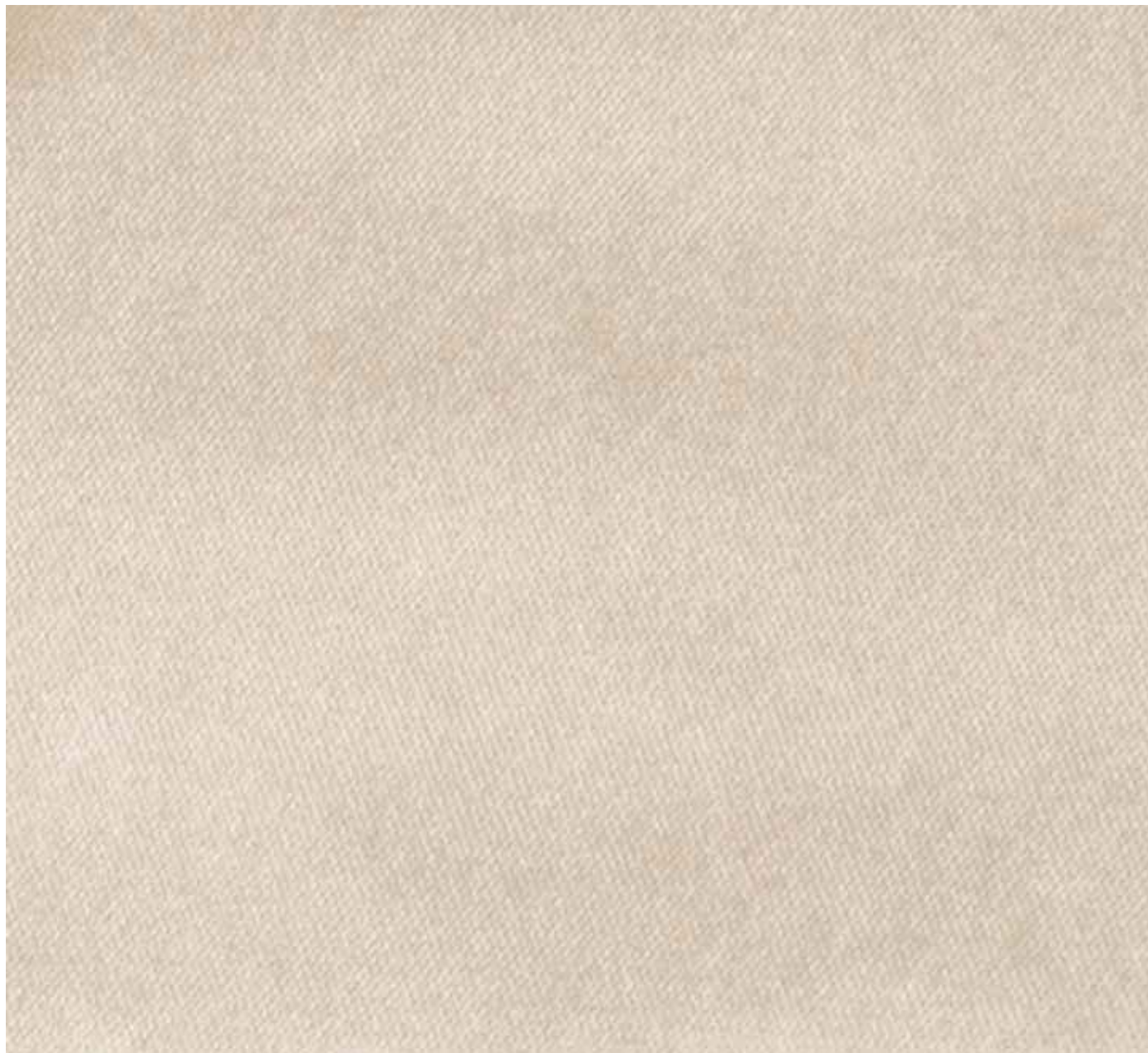




Cat. B / Art. Siena Riga F691/06 - LIB











Cat. B / Art. Melodia Damasco Oro - MEL





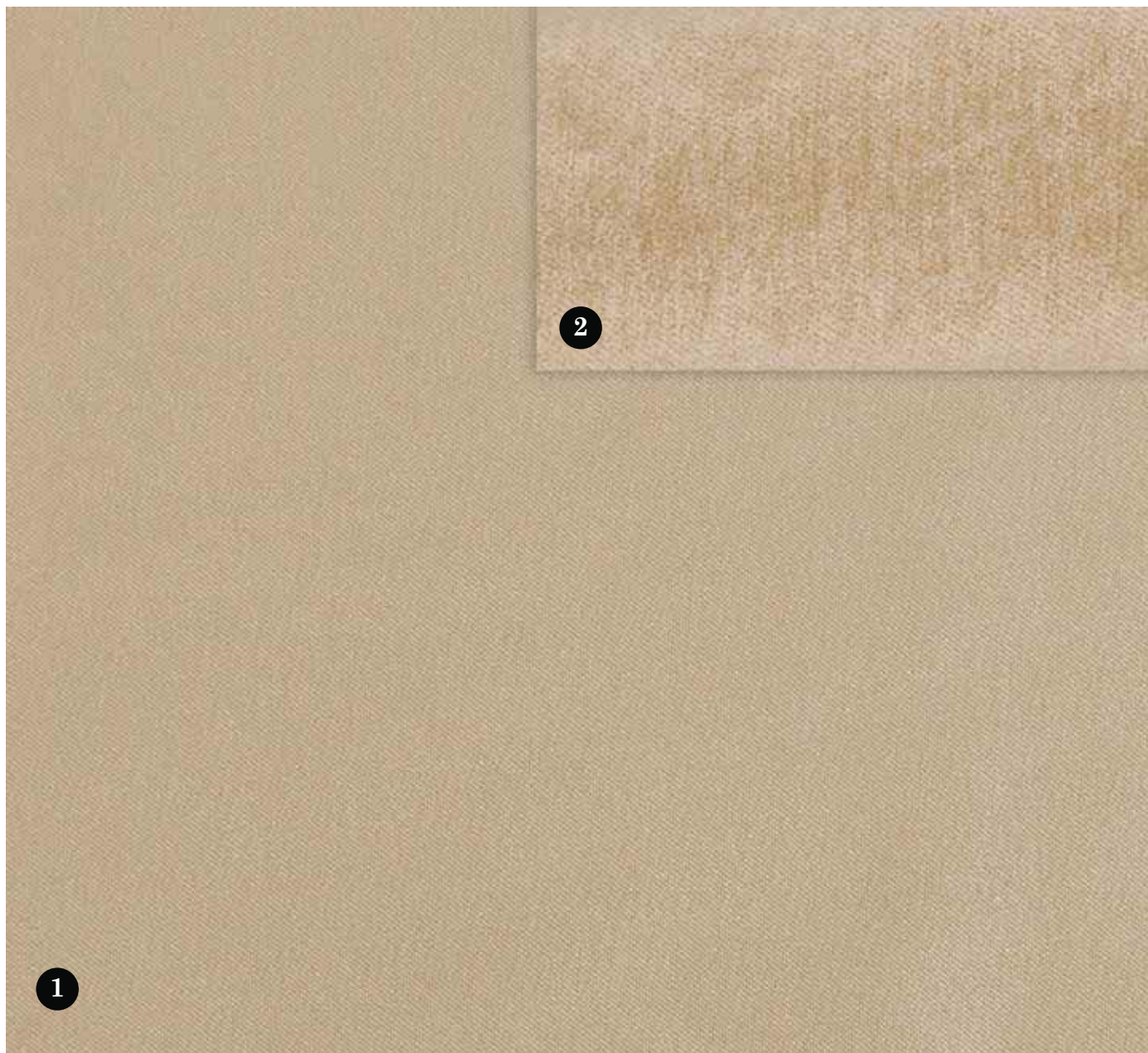
ČALOUNĚNÉ POSTELE





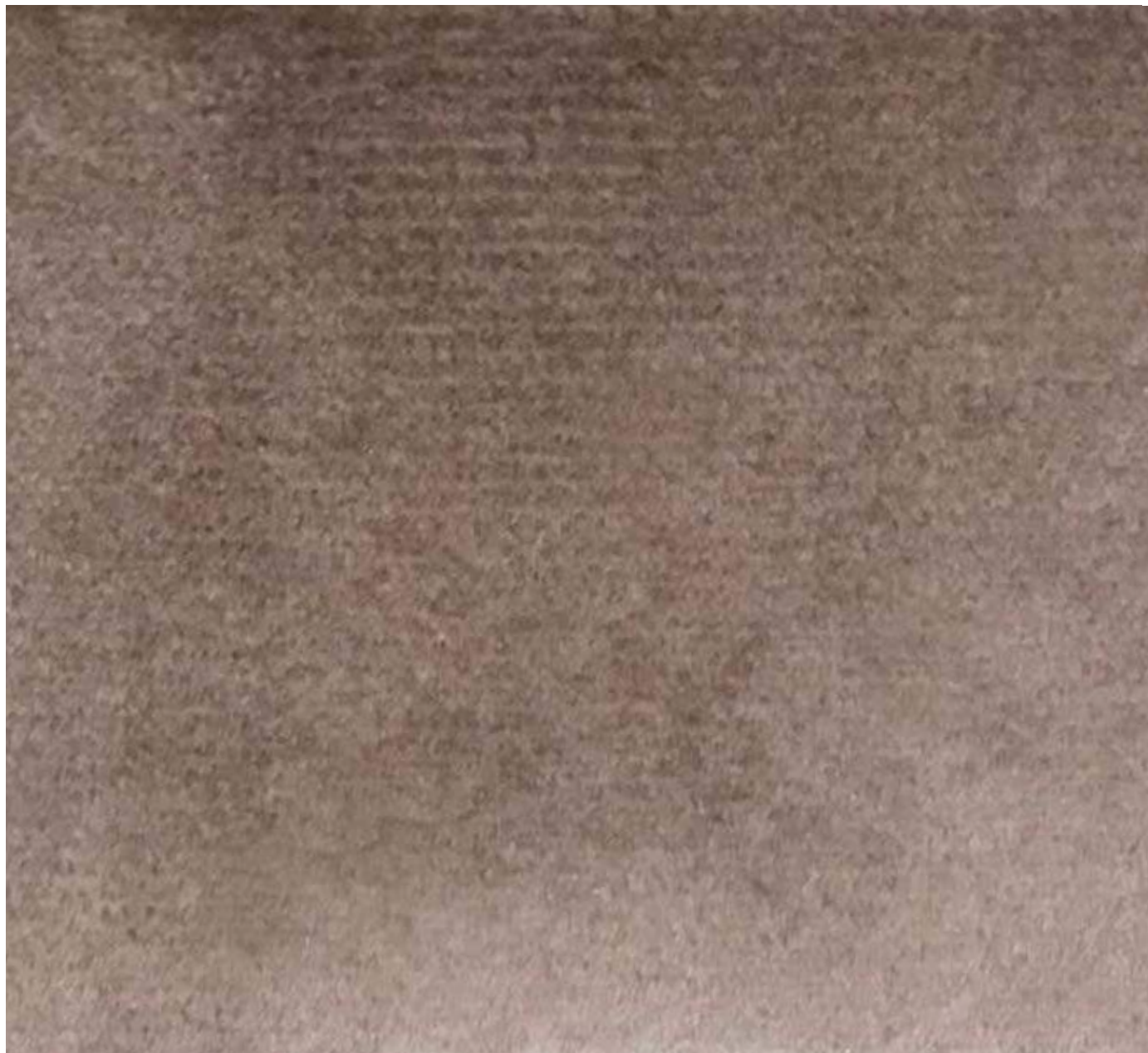






1 Cat. B / Art. L1382/22 - CN1

2 Cat. B / Art. F488/01 - TA1



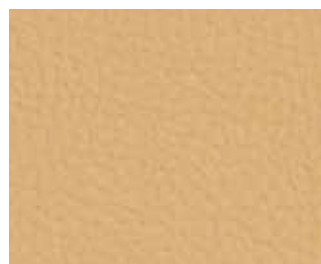
*PRAVÉ KŮŽE*



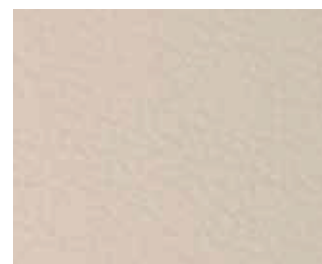
Color 304 - cod. 225



Color 394 - cod. 204



Color 367 - cod. 203



Color 332 - cod. 201



Color 136 - cod. 136



Color 677 - cod. 677



Color 123 - cod. 210



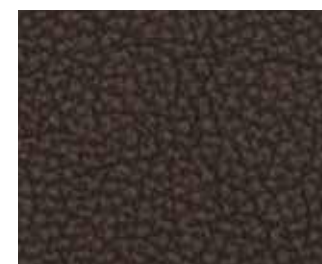
Color 305 - cod. 107



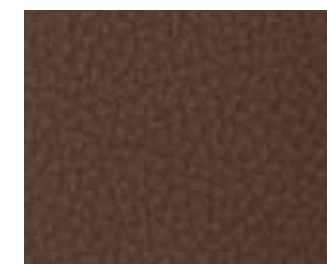
Color 699 - cod. 022



Color 384 - cod. 109



Color 358 - cod. 325



Color 308 - cod. 233



Color 611 - cod. 611



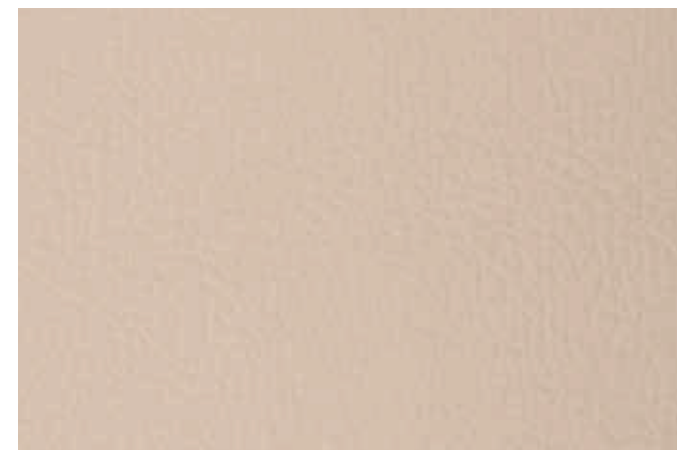
Color 100 - cod. 100



Color 344 - cod. 052



Col. NERO - cod. 250



Color 129 - cod. V01

# ITALIER

---

[www.italier.cz](http://www.italier.cz) [info@italier.cz](mailto:info@italier.cz)

+420 774 431 196