

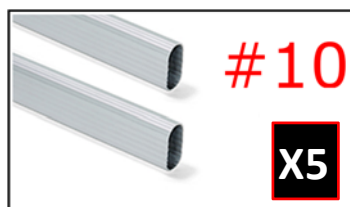
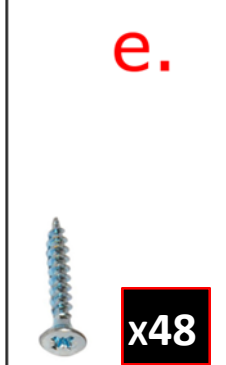


ARREDOCLASSIC

Il prestigio del Made in Italy

SCHEMA DI MONTAGGIO ARMADIO 3/ANTE  
ASSEMBLING INSTRUCTION FOR 3/DOORS WARDROBE  
INSTRUCTION DE MONTAGE ARMOIRE 3/PORTES  
ИНСТРУКЦИИ ПО МОНТАЖУ ШКАФА 3/СТВОРКИ

*Fantasia Collection*





ARREDOCLASSIC

Il prestigio del Made in Italy

SCHEMA DI MONTAGGIO ARMADIO 3/ANTE  
ASSEMBLING INSTRUCTION FOR 3/DOORS WARDROBE  
INSTRUCTION DE MONTAGE ARMOIRE 3/PORTES  
ИНСТРУКЦИИ ПО МОНТАЖУ ШКАФА 3/СТВОРКИ

## Fantasia Collection

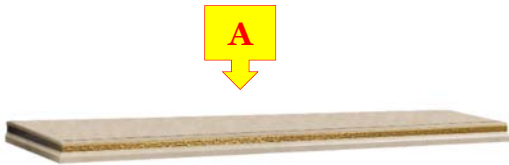
1

POSIZIONARE LA BASE ( A ) SUL PAVIMENTO.

PLACE THE BASE ( A ) ON THE FLOOR.

POSITIONNER LA BASE ( A ) SUR LE SOL.

КЛАДИТЕ БАЗУ ( A ) НА ПОЛ.



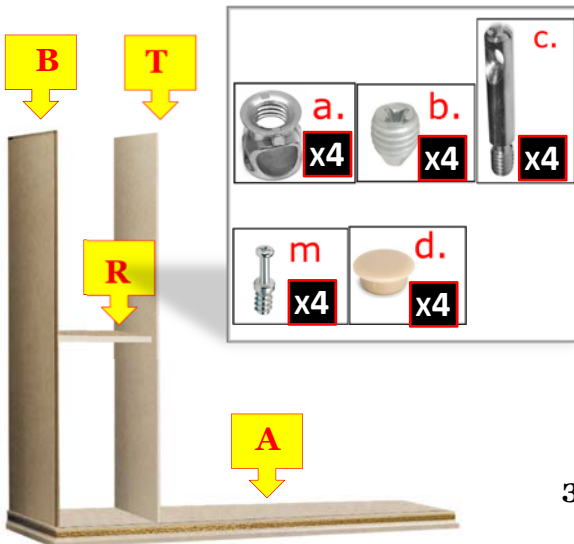
2

MONTARE IL FIANCO ESTERNO ( B ) ALLA BASE ( A )  
POI MONTARE IL TRAMEZZO ( T ) E INSERIRE E  
FISSARE IL RIPIANO ( R )

SET UP THE OUTSIDE PANEL ( B ) TO THE BASE ( A )  
AND SET UP THE INSIDE PANEL ( T ) THEN  
INSERT AND FIX THE SHELF ( R )

MONTER LE CÔTE TERMINAL EXTÉRIEUR ( B ) À LA  
BASE ( A ) EN SUITE MONTER LE CÔTE CENTRAL ( T )  
ET FIXER L'ÉTAGÈRE ( R )

ЗАКРЕПИТЕ ВНЕШНЮЮ БОКОВУЮ ПАНЕЛЬ ( B ) К БАЗЕ  
( A ), ЗАТЕМ ЦЕНТРАЛЬНУЮ ПАНЕЛЬ ( T ). ВСТАВЬТЕ И  
ЗАКРЕПИТЕ ПОЛКУ ( R )



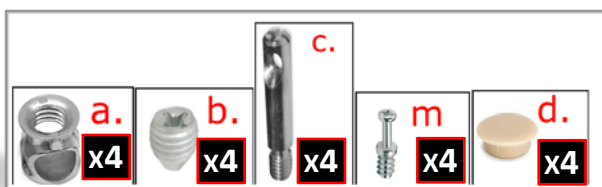
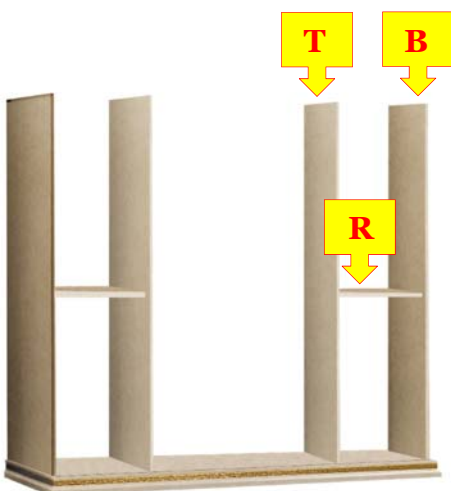
3

MONTARE IL FIANCO INTERNO ( T )  
POI MONTARE IL FIANCO ESTERNO ( B ) E IL RIPIANO ( R )

SET UP THE INSIDE PANEL ( T ) THEN SET UP THE  
OUTSIDE PANEL ( B ) AND THE SHELF ( R )

MONTER LE CÔTE CENTRAL ( T ) ENSUITE MONTER LE CÔTE  
EXTÉRIEUR ( B ) ET FIXER L'ÉTAGÈRE ( R )

МОНТИРУЙТЕ ВНУТРЕННЮЮ БОКОВУЮ ПАНЕЛЬ  
( T ) И ЗАТЕМ ВНЕШНЮЮ БОКОВУЮ ПАНЕЛЬ ( B ) И  
ПОЛКУ ( R )



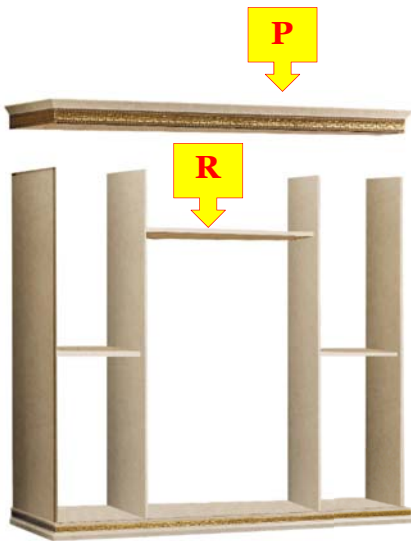


ARREDOCLASSIC

Il prestigio del Made in Italy

SCHEMA DI MONTAGGIO ARMADIO 3/ANTE  
ASSEMBLING INSTRUCTION FOR 3/DOORS WARDROBE  
INSTRUCTION DE MONTAGE ARMOIRE 3/PORTES  
ИНСТРУКЦИИ ПО МОНТАЖУ ШКАФА 3/СТВОРКИ

## Fantasia Collection



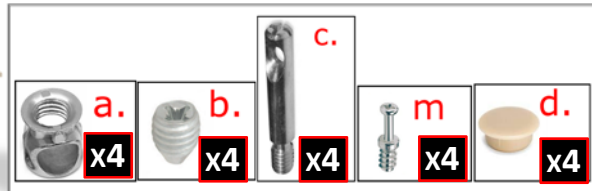
4

MONTARE IL RIPIANO ( R ) POI MONTARE IL CAPPELLO ( P ).

INSERT THE SHELF ( R ) THEN SET UP THE CAP ( P ).

FIXER L'ÉTAGÈRE ( R ) ET APRES MONTER LE CHAPEAU ( P ).

МОНТИРУЙТЕ ПОЛКУ ( R ) И «ШАПКУ» ( P ).



5

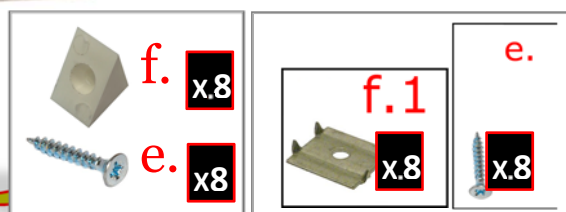


POSIZIONARE PRIMA GLI SCHIENALI  
LATERALI ( H ) CHE ANDRANNO INSERITI NEGLI APPOSITI  
INCASSI PRESENTI SU FIANCHI E BASE. PER ULTIMO INSERIRE LO  
SCHIENALE CENTRALE ( L ).

PLACE FIRST THE LEFT AND RIGHT BACK  
SIDE PANELS ( H ) SLIDING THEM INTO THE GROOVES OF SIDE  
PANELS AND BASE. FINALLY INSERT THE  
CENTRAL BACK PANEL ( L ) IN THE SAME WAY.

POSITIONNER D'ABORD LES N°2 DOSSIERS LATÉRAUX ( H ) ET  
LES INSÉRER DANS LES RAINURES DES CÔTES ET BASE.  
APRÈS INSÉRER ÉGALEMENT LE DOSSIER CENTRAL ( L ).

ВСТАВЬТЕ СНАЧАЛА ЗАДНИЕ БОКОВЫЕ ПАНЕЛИ ( H ) В  
СПЕЦИАЛЬНЫЕ ВЫЕМКИ, РАСПОЛОЖЕННЫЕ ПО БОКАМ И НА  
БАЗЕ И ЗАТЕМ ВСТАВЬТЕ ЦЕНТРАЛЬНУЮ ЗАДНЮЮ ПАНЕЛЬ ( L ).





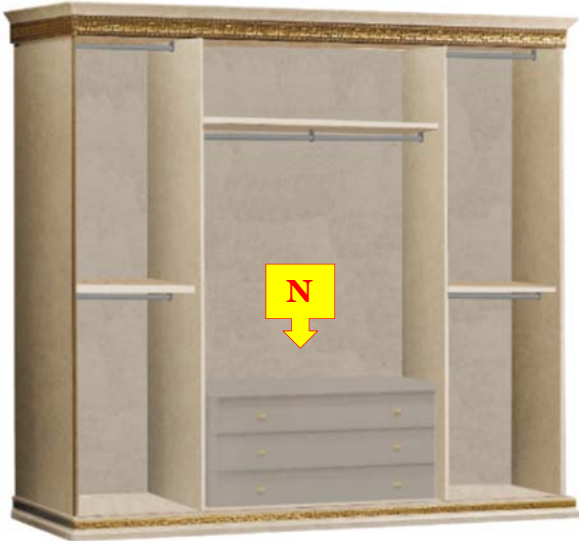
ARREDOCLASSIC

Il prestigio del Made in Italy

SCHEMA DI MONTAGGIO ARMADIO 3/ANTE  
ASSEMBLING INSTRUCTION FOR 3/DOORS WARDROBE  
INSTRUCTION DE MONTAGE ARMOIRE 3/PORTES  
ИНСТРУКЦИИ ПО МОНТАЖУ ШКАФА 3/СТВОРКИ

*Fantasia Collection*

6



INSERIRE LA CASSETTIERA ( N ).  
INSERT THE DRAWER UNIT ( N ).  
PLACER LES TIROIRS ( N ).  
ВСТАВЬТЕ КОМОД ( N ).

7





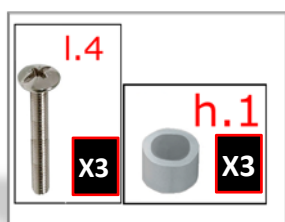
ARREDOCLASSIC

Il prestigio del Made in Italy

SCHEMA DI MONTAGGIO ARMADIO 3/ANTE  
ASSEMBLING INSTRUCTION FOR 3/DOORS WARDROBE  
INSTRUCTION DE MONTAGE ARMOIRE 3/PORTES  
ИНСТРУКЦИИ ПО МОНТАЖУ ШКАФА 3/СТВОРКИ

*Fantasia Collection*

8



MONTARE LE ANTE

SET UP THE DOORS

MONTER LE PORTES

МОНТИРУЙТЕ СТВОРКИ

