



ARREDOCLASSIC

Il prestigio del Made in Italy

SCHEMA DI MONTAGGIO FAGIOLINA&CONSOLLE
ASSEMBLING INSTRUCTION FOR DRESSING TABLE
& SHAPED DRESSING TABLE
INSTRUCTION DE MONTAGE POUR COIFFEUSE & COIFFEUSE FACONNEES
ИНСТРУКЦИИ ПО СБОРКЕ ТУАЛЕТНОГО СТОЛИКА/КОНСОЛИ

Fantasia Collection



a.

x4



b.

x4



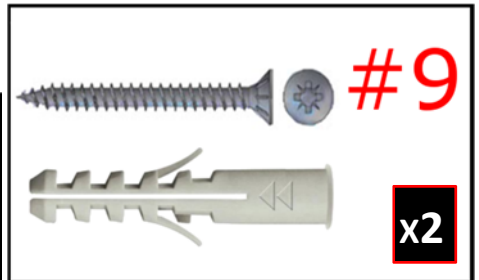
c.

x4



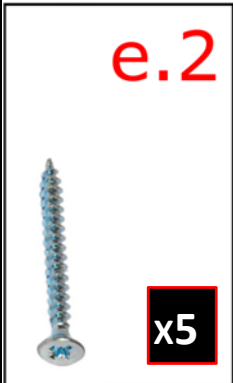
d.

x6



#9

x2



e.2

x5



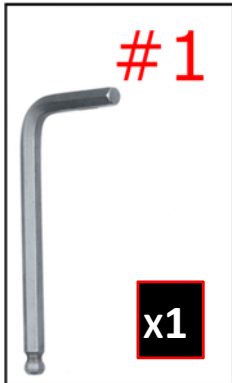
l.6

x6



r.

x6



#1

x1

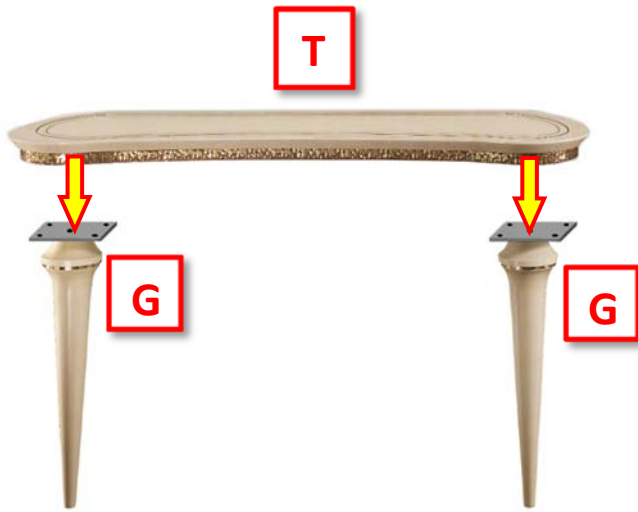


ARREDOCLASSIC

Il prestigio del Made in Italy

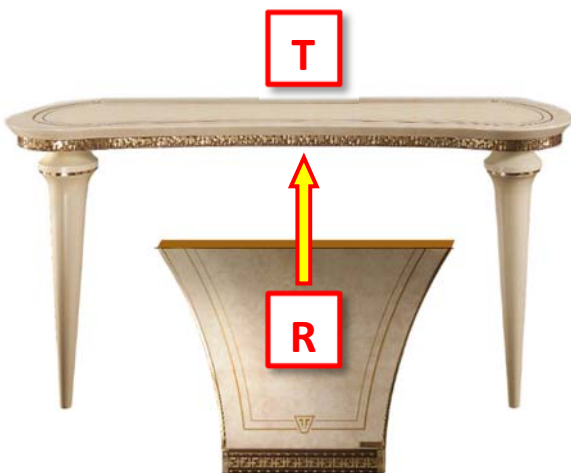
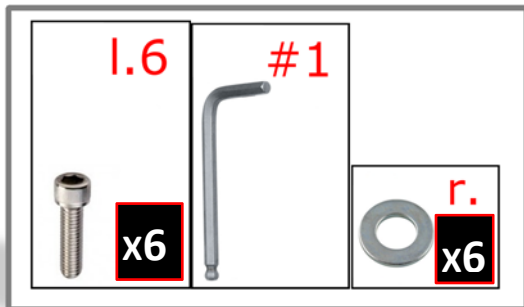
SCHEMA DI MONTAGGIO FAGIOLINA&CONSOLLE
ASSEMBLING INSTRUCTION FOR DRESSING TABLE
& SHAPED DRESSING TABLE
INSTRUCTION DE MONTAGE POUR COIFFEUSE & COIFFEUSE FACONNEES
ИНСТРУКЦИИ ПО СБОРКЕ ТУАЛЕТНОГО СТОЛИКА/КОНСОЛИ

Fantasia Collection



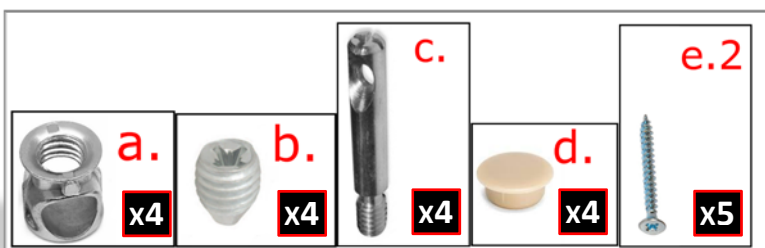
1

FISSARE LE GAMBE (G) AL TOP (T).
FIX THE LEGS (G) TO THE TOP (T).
FIXER LES JAMBES (G) AU TOP (T).
ПРИКРЕПИТЬ НОЖКИ (G) К
СТОЛЕШНИЦЕ (T).



2

FISSARE IL PANNELLO INFERIORE (R) AL TOP (T)
UTILIZZANDO LE APPOSITE VITI.
FIX THE LOWER PANEL (R) TO THE TOP (T)
USING PROVIDED SCREWS.
FIXER LE PANNEAU INFERIEUR (R) AU TOP (T)
EN UTILISANT LES VIS FOURNIS.
ПРИКРЕПИТЬ НИЖНЮЮ ПАНЕЛЬ (R) К
СТОЛЕШНИЦЕ (T)
ПРИ ПОМОЩИ СПЕЦИАЛЬНЫХ ШУРУПОВ





ARREDOCLASSIC

Il prestigio del Made in Italy

SCHEMA DI MONTAGGIO FAGIOLINA&CONSOLLE
ASSEMBLING INSTRUCTION FOR DRESSING TABLE
& SHAPED DRESSING TABLE
INSTRUCTION DE MONTAGE POUR COIFFEUSE & COIFFEUSE FACONNEES
ИНСТРУКЦИИ ПО СБОРКЕ ТУАЛЕТНОГО СТОЛИКА/КОНСОЛИ

Fantasia Collection

3



APPOGGIARE LA CONSOLLE/FAGIOLINA ALLA PARETE
DESIDERATA.

PLACE THE SHAPED DRESSING TABLE AGAINST THE
WALL.

POSITIONNER LA COIFFEUSE CONTRE LE MUR.

ПРИДВИНУТЬ КОНСОЛЬ К ВЫБРАННОЙ СТЕНЕ

4



CON L'AIUTO DI UNA MATITA, FARE UN SEGNO
SUL MURO IN CORRISPONDENZA DEI N°2 FORI
PRESENTI NEL PANNELLO INFERIORE.

USE A PENCIL TO MARK THE WALL IN
CORRESPONDENCE OF THE N.2 HOLES OF
THE LOWER PANEL.

EN UTILISANT UN CRAYON, MARQUER LE MUR EN
CORRESPONDANCE DES N. 2 TROUS DU PANNEAU
INFERIEUR.

НАМЕТИТЬ КАРАНДАШОМ МЕСТА ДЛЯ
ОТВЕРСТИЙ В СТЕНЕ

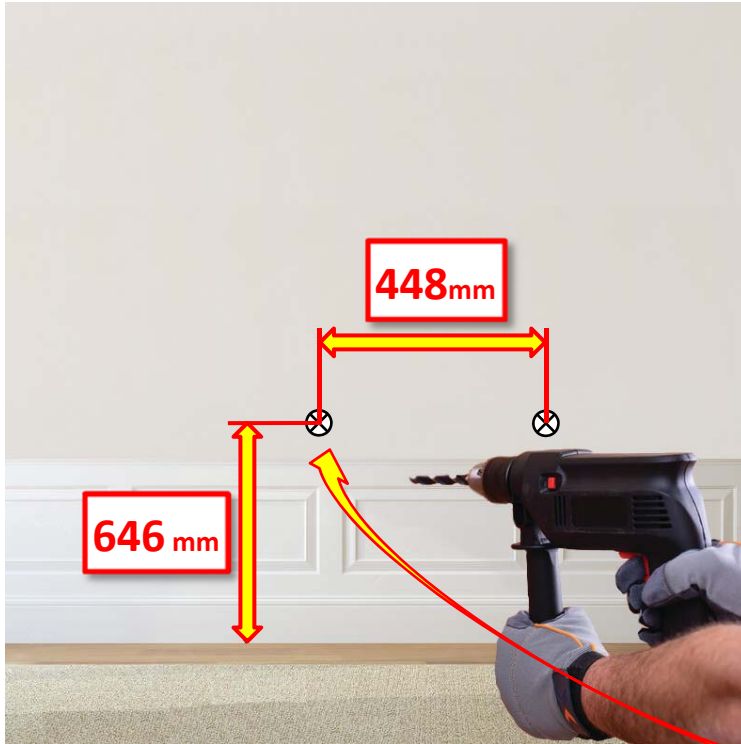


ARREDOCLASSIC

Il prestigio del Made in Italy

SCHEMA DI MONTAGGIO FAGIOLINA & CONSOLLE
ASSEMBLING INSTRUCTION FOR DRESSING TABLE
& SHAPED DRESSING TABLE
INSTRUCTION DE MONTAGE POUR COIFFEUSE & COIFFEUSE FACONNEES
ИНСТРУКЦИИ ПО СБОРКЕ ТУАЛЕТНОГО СТОЛИКА/КОНСОЛИ

Fantasia Collection



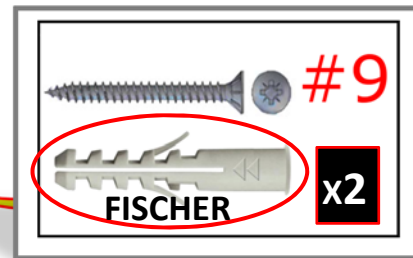
5

FORARE LA PARETE IN CORRISPONDENZA DEI N.2
SEGNI FATTI IN PRECEDENZA, QUINDI INSERIRE
IL FISCHER.

DRILL THE WALL IN CORRESPONDANCE OF
THE N.2 MARKS MADE BEFORE AND INSERT
THE FISCHER.

FORER LE MUR EN CORRESPONDENCE DES N.2
SIGNES FAIT PRECEDEMMENT ET INSERER LE
FISCHER.

ПРОСВЕРЛИТЬ ОТВЕРСТИЯ В СТЕНЕ И
ВСТАВИТЬ КРЕПЕЖ "FISCHER".



6

AVVICINARE NUOVAMENTE LA
CONSOLLE/FAGIOLINA AL MURO E FISSARLA ALLO
STESSO CON LE APOSITE VITI.

FIX THE SHAPED DRESSING TABLE AGAINST
THE WALL USING SPECIFIC SCREWS.

FIXER LA COIFFEUSE AU MUR EN UTILISANT LES
VIS SPÉCIFIQUES.

СНОВА ПРИДВИНУТЬ КОНСОЛЬ/СТОЛИК К
СТЕНЕ И ЗАКРЕПИТЬ ЕЕ ПРИ ПОМОЩИ
ШУРУПОВ.

